

CONSUMER PRICE INDEX

FEBRUARY 2025

- The Composite CPI for February 2025 decreased by 0.16% year-on-year owing to the high comparison base resulting from increases in prices of some goods and services amid the Chinese New Year that fell in February last year. Among the various sections of goods and services, the price indices of Recreation, Sport & Culture, Transport, Information & Communication and Clothing & Footwear saw notable year-on-year decline, while the price indices of Miscellaneous Goods & Services, Alcoholic Beverages & Tobacco and Education went up. Besides, price indices of Food & Non-Alcoholic Beverages and Housing & Fuels recorded growth.
- The Composite CPI dropped by 0.19% month-on-month. Price index of Recreation, Sport & Culture decreased due to lower package tour charges and hotel room rates after the Chinese New Year holiday. In addition, the price indices of Transport and Clothing & Footwear registered a fall. On the other hand, price indices of Alcoholic Beverages & Tobacco, Education and Food & Non-Alcoholic Beverages showed month-on-month rise.
- For the 12 months ended February 2025, the average Composite CPI climbed by 0.57% from the previous period. The average Composite CPI for the first two months of 2025 rose by 0.2% year-on-year.

Consumer Price Index

	07/2023 - 06/2024 = 100		
	Composite CPI	CPI-A	CPI-B
Index value	100.94	100.87	100.99
Year-on-year change (%)	-0.16	-0.15	-0.20
Month-on-month change (%)	-0.19	-0.10	-0.26
Annualised change (%)	0.57	0.54	0.59
Cumulative change (%)	0.20	0.16	0.21

Changes of the Composite CPI

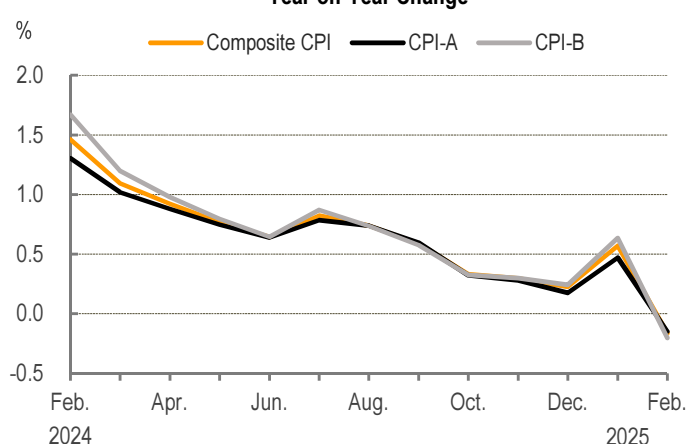
Sections of Goods and Services	Weight	Year-on-Year	Month-on-Month	Annualised
Food & Non-Alcoholic Beverages	29.47	0.69	0.15	0.94
<i>Of which: Fresh, chilled or frozen pork</i>	1.52	-3.35	0.65	-12.12
<i>Live or fresh fish</i>	1.13	-3.19	-0.33	-0.77
<i>Vegetables</i>	1.17	-2.32	0.23	1.72
<i>Fruit</i>	1.25	0.90	0.08	0.93
<i>Bread & biscuits</i>	0.86	1.86	0.10	1.50
<i>Eating out & takeaway</i>	18.21	1.64	0.17	2.06
Alcoholic Beverages & Tobacco	0.77	2.03	1.10	0.63
Clothing & Footwear	1.91	-1.98	-0.93	0.55
Housing & Fuels	34.47	0.31	0.05	0.49
<i>Of which: Liquefied petroleum gas</i>	0.72	2.41	0.77	5.50
Household Furnishings & Services	3.43	-0.72	-0.16	-0.36
Health	4.39	1.06	0.08	1.97
Transport	8.33	-4.00	-1.64	-3.19
<i>Of which: Automotive fuels</i>	1.56	-0.86	0.70	1.41
Information & Communication	3.54	-2.83	-0.01	-0.62
Recreation, Sport & Culture	3.04	-5.03	-3.60	0.78
Education	3.30	1.17	0.46	2.84
Miscellaneous Goods & Services	7.35	2.05	-0.07	2.54

Historical Data for the Composite CPI

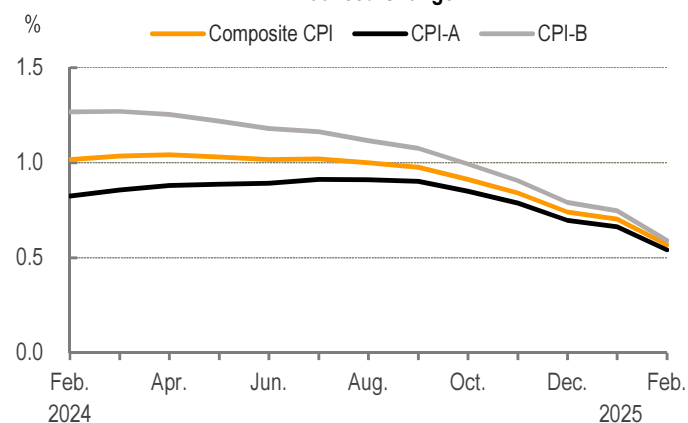
	2020	2021	2022	2023	2024
Annual inflation rate	0.81	0.03	1.04	0.94	0.74
Changes for February					
Year-on-year	2.33	-0.95	0.81	0.77	1.46
Month-on-month	0.04	0.27	0.09	0.09	0.54
Annualised	2.71	0.19	0.36	1.02	1.02

% Percentage

Year-on-Year Change



Annualised Change



For additional information:
<http://www.dsec.gov.mo/e/cpi.aspx>