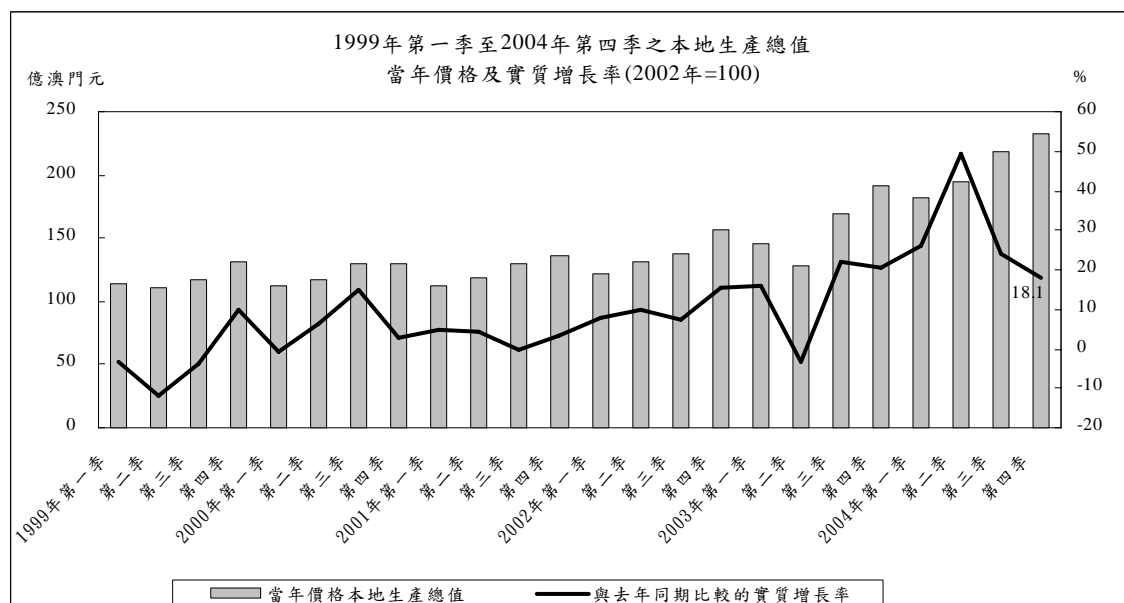


季度本地生產總值

二零零四年第四季

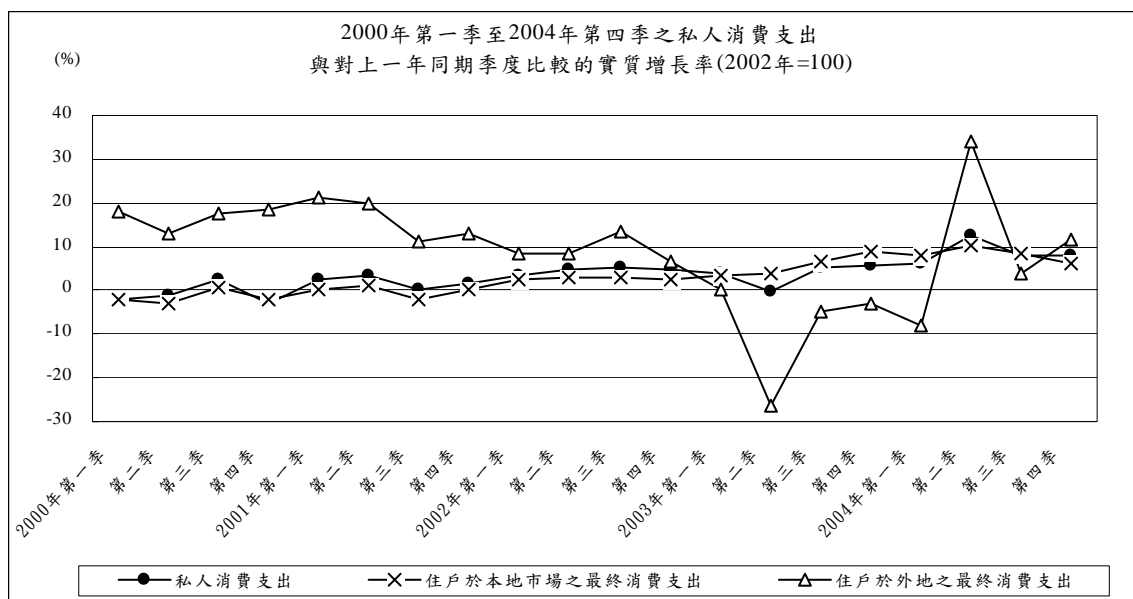
四號刊

2004年第四季博彩旅遊業表現依然出色，增長速度雖不及首三季強勁，但博彩總收益的名義增長仍達28.2%，成為推動澳門經濟增長的動力。另外，旅客消費(不包括博彩消費)亦隨旅客的增加而上升13.5%^a。投資方面，因多項大型工程全面展開及資本貨物進口增加而保持升勢。貨物出口較第三季放緩，祇上升4.4%。經綜合相關數據估算，第四季的本地生產總值錄得18.1%的升幅。另外，根據最新的資料估算，經主要修訂後今年第一、第二及第三季本地生產總值的增幅分別為26.2%、49.4%及24.2%。

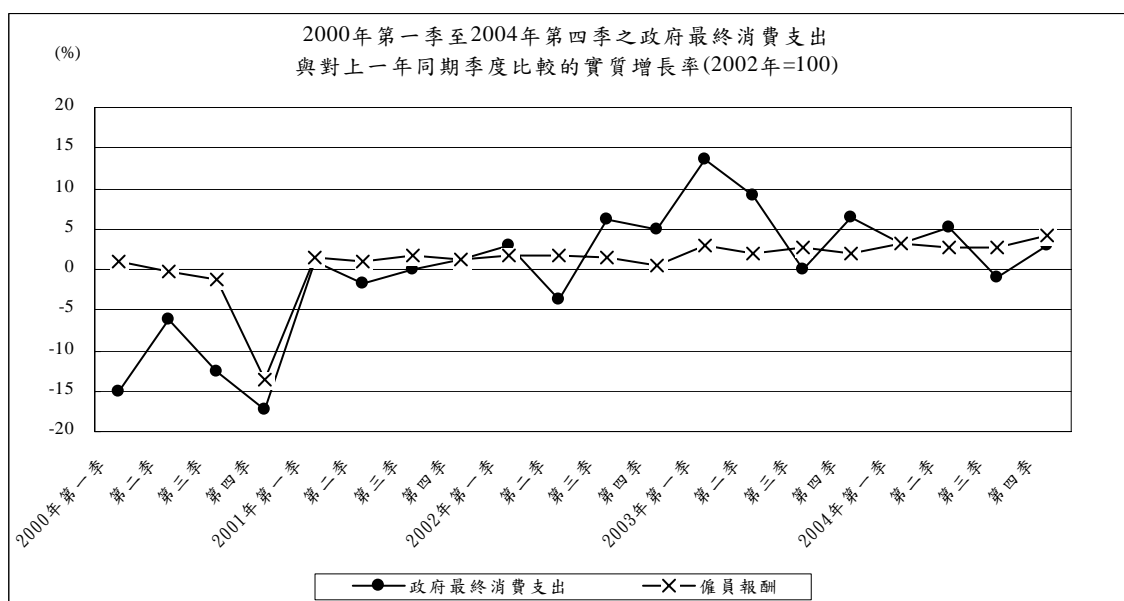


按本地生產總值各個主要組成部分分析，2004年第四季私人消費支出上升7.9%，與第三季的增幅相同。其中住戶在本地市場的最終消費支出上升6.1%，在外地的消費則上升11.5%。

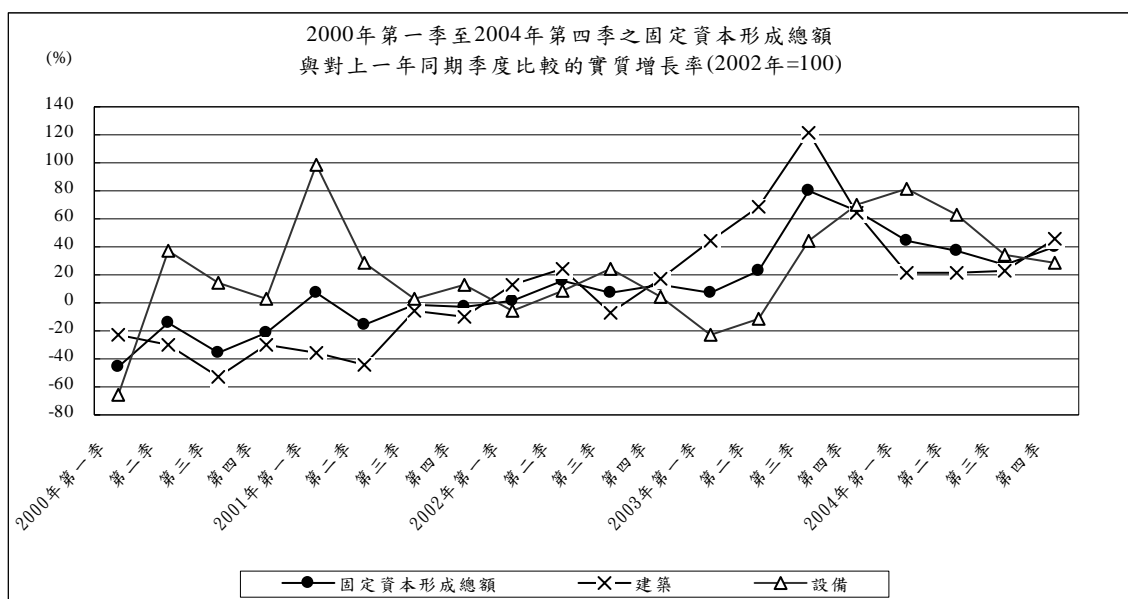
^a 如無特別聲明，本分析所提及之變動率均是指與去年同期比較的實質變動率。



政府最終消費上升2.9%，其中僱員報酬和貨物及服務的淨購入分別錄得4.2%和0.5%的升幅。

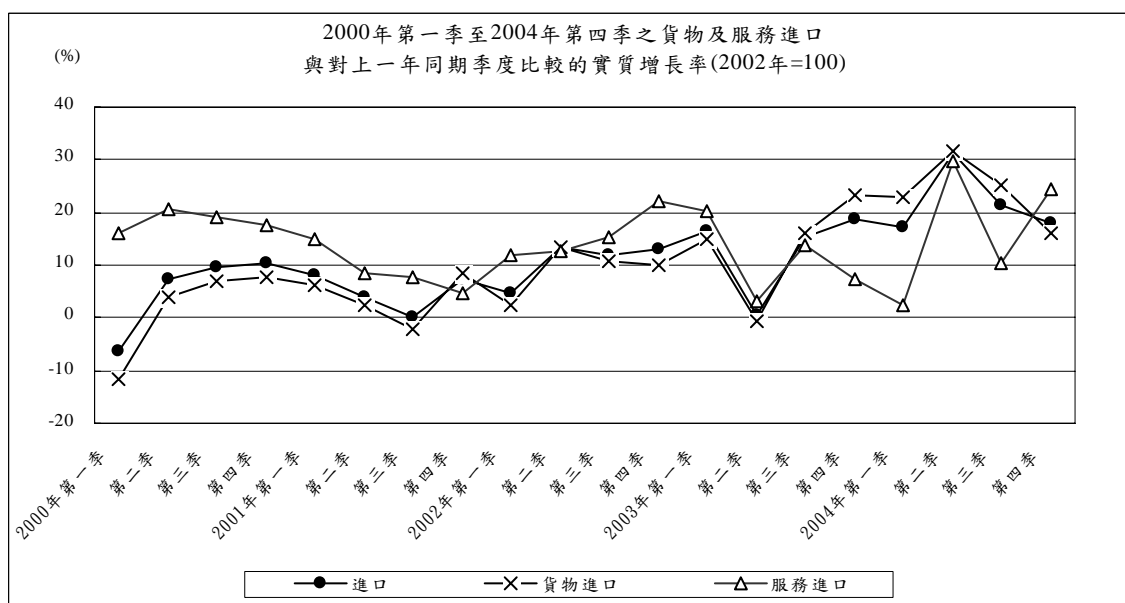
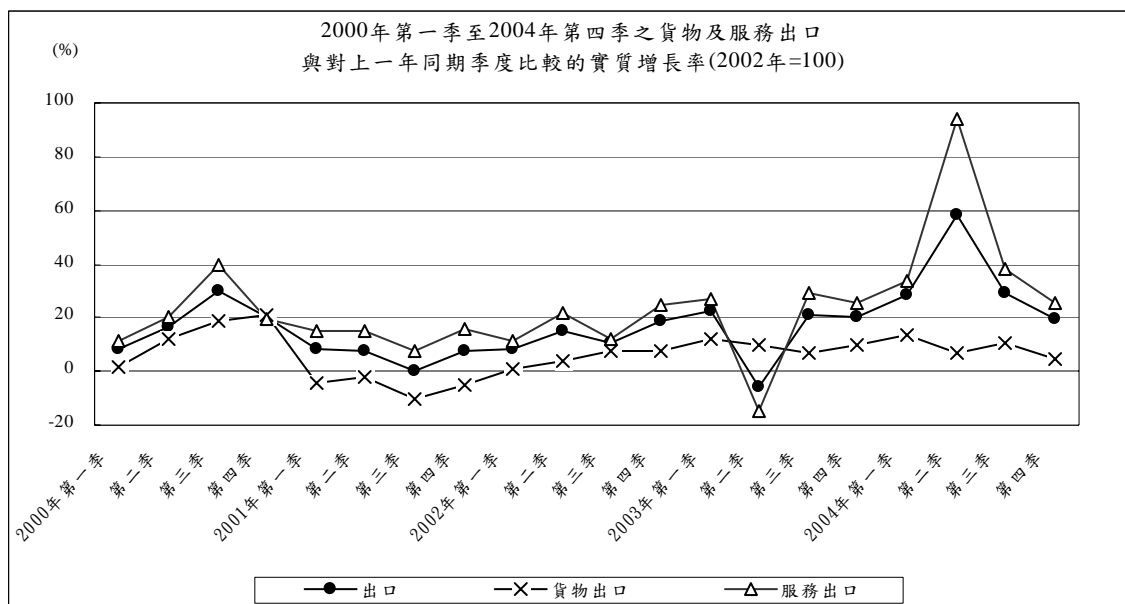


反映投資的固定資本形成總額上升39.4%，較第三季的27.6%為高，增長持續強勁。其中私人部門的投資錄得39.1%的升幅，主要原因是設備投資及建築投資分別上升27.6%及49.3%所致。至於政府部門的投資上升39.7%，其中建築投資上升41.4%，而設備投資方面則增加31.2%。綜合私人及政府部門的數據估算，第四季的整體建築投資上升45.1%，較第三季的22.9%為高；設備投資則上升28.3%，較第三季的33.8%為低。



在有形貿易方面，貨物出口總額的名義升幅及實質升幅分別為5.6%及4.4%，均較第三季的14.7%及10.3%為低。其中出口美國錄得3.1%的名義升幅，但出口歐盟則錄得4.0%的名義跌幅。而貨物進口^b亦因需求增加而大幅上升，名義升幅及實質升幅分別為19.9%及16.1%，均較第三季的27.6%及25.2%為低。至於無形貿易（服務出口）方面，博彩服務出口的升幅高達28.2%；旅客消費（不包括博彩消費）亦因旅客入境人數增加而錄得13.5%的升幅；運輸服務出口亦大幅上升67.9%。綜合主要的服務出口數據估算，整體無形貿易出口的增幅為25.3%，較第三季的38.4%為低。另一方面，服務進口則上升24.5%，較第三季的10.3%高。

^b 有關的貨物進口值是經過供給和使用的平衡分析進行調整，故此其增長率與本局的對外貿易統計的貨物進口增長率不同。



1. 1998年至2004年之本地生產總值、人均本地生產總值及本地生產總值之平減物價指數

Produto Interno Bruto, Produto Interno Bruto per capita e deflator implícito do Produto Interno Bruto, 1998 - 2004
 Gross Domestic Product, per-capita Gross Domestic Product and implicit deflator of Gross Domestic Product, 1998 - 2004

年份	季	本地生產總值, 以當年價格計算		本地生產總值, 以不變(2002年)價格計算		本地生產總值之平減物價指數 (2002年=100)		人均本地生產總值, 以當年價格計算		人均本地生產總值, 以不變(2002年)價格計算	
		Produto Interno Bruto, a preços correntes		Produto Interno Bruto, a preços constantes (2002)		Deflator implícito (ano:2002=100) do Produto Interno Bruto		Produto Interno Bruto per capita, a preços correntes		Produto Interno Bruto per capita, a preços constantes (2002)	
Year	Quarter	Gross Domestic Product, at current prices		Gross Domestic Product, at constant (2002) prices		Implicit deflator (year:2002=100) of Gross Domestic Product		Per-capita Gross Domestic Product, at current prices		Per-capita Gross Domestic Product, at constant (2002) prices	
		千澳門元 1000 MOP		千澳門元 1000 MOP				澳門元 MOP		澳門元 MOP	
1		2		3		4		5		6	
1998		49 360 446	(-7.3)	46 862 141	(-4.6)	105.3	(-2.8)	116 884	(-8.4)	110 968	(-5.7)
1999		47 287 433	(-4.2)	45 756 819	(-2.4)	103.3	(-1.9)	110 637	(-5.3)	107 056	(-3.5)
2000		48 972 396	(3.6)	48 386 399	(5.7)	101.2	(-2.1)	113 739	(2.8)	112 378	(5.0)
2001		49 704 405	(1.5)	49 783 977	(2.9)	99.8	(-1.4)	114 501	(0.7)	114 684	(2.1)
2002		54 818 745	(10.3)	54 818 745	(10.1)	100.0	(0.2)	125 058	(9.2)	125 058	(9.0)
2003		63 564 343	(16.0)	62 581 691	(14.2)	101.6	(1.6)	142 820	(14.2)	140 612	(12.4)
2004 [@]		82 685 465	(30.1)	80 089 012	(28.0)	103.2	(1.6)	180 965	(26.7)	175 282	(24.7)
1998	1	11 930 014	..	11 189 824	..	106.6
	2	12 601 178	..	12 190 267	..	103.4
	3	12 614 367	..	11 853 697	..	106.4
	4	12 214 887	..	11 628 353	..	105.0
1999	1	11 330 882	(-5.0)	10 837 547	(-3.1)	104.6	(-1.9)
	2	11 145 060	(-11.6)	10 761 401	(-11.7)	103.6	(0.2)
	3	11 742 756	(-6.9)	11 401 607	(-3.8)	103.0	(-3.2)
	4	13 068 734	(7.0)	12 756 264	(9.7)	102.4	(-2.5)
2000	1	11 271 528	(-0.5)	10 740 974	(-0.9)	104.9	(0.4)
	2	11 678 777	(4.8)	11 465 103	(6.5)	101.9	(-1.6)
	3	13 017 268	(10.9)	13 096 407	(14.9)	99.4	(-3.5)
	4	13 004 822	(-0.5)	13 083 915	(2.6)	99.4	(-3.0)
2001	1	11 295 949	(0.2)	11 282 722	(5.0)	100.1	(-4.6)
	2	11 857 329	(1.5)	11 966 772	(4.4)	99.1	(-2.7)
	3	12 957 768	(-0.5)	13 030 035	(-0.5)	99.4	(0)
	4	13 593 359	(4.5)	13 504 448	(3.2)	100.7	(1.3)
2002	1	12 218 950	(8.2)	12 147 810	(7.7)	100.6	(0.5)
	2	13 188 650	(11.2)	13 146 656	(9.9)	100.3	(1.2)
	3	13 819 848	(6.7)	13 962 679	(7.2)	99.0	(-0.5)
	4	15 591 297	(14.7)	15 561 600	(15.2)	100.2	(-0.5)
2003	1	14 484 273	(18.5)	14 118 697	(16.2)	102.6	(2.0)
	2	12 877 569	(-2.4)	12 740 102	(-3.1)	101.1	(0.8)
	3	16 977 916	(22.9)	17 001 356	(21.8)	99.9	(0.9)
	4	19 224 586	(23.3)	18 721 537	(20.3)	102.7	(2.5)
2004	1 [@]	18 121 202	(25.1)	17 822 041	(26.2)	101.7	(-0.9)
	2 [@]	19 480 819	(51.3)	19 039 054	(49.4)	102.3	(1.2)
	3 [@]	21 774 927	(28.3)	21 123 981	(24.2)	103.1	(3.2)
	4 [@]	23 308 517	(21.2)	22 103 936	(18.1)	105.4	(2.7)

@ : 數字在日後會作出修訂 Dado a ser revisto no futuro Figures are subject to revisions later on

季度本地生產總值
 PRODUTO INTERNO BRUTO TRIMESTRAL
 QUARTERLY GROSS DOMESTIC PRODUCT

二零零四年第四季 統計暨普查局 四號刊
 4º TRIMESTRE/2004 DSEC Nº 4
 4th QUARTER 2004 DSEC No. 4

2. 1998年至2004年以當年價格估算之本地生產總值及其主要支出項目

Produto Interno Bruto e principais componentes da despesa a preços correntes, 1998-2004

Gross Domestic Product and main components of expenditure at current prices, 1998-2004

千澳門元
1000 MOP

年份	季	本地生產總值 ^a	私人消費支出	政府最終消費支出	固定資本形成總額	庫存變化	貨物出口	服務出口	貨物進口	服務進口
Ano	Trimestre	Produto Interno Bruto ^a	Despesa de consumo privado	Despesa de consumo final do governo	Formação bruta de capital fixo	Variação de existências	Exportações de bens	Exportações de serviços	Importações de bens	Importações de serviços
Year	Quarter	Gross Domestic Product ^a	Private consumption expenditure	Government final consumption expenditure	Gross fixed capital formation	Changes in inventories	Exports of goods	Exports of services	Imports of goods	Imports of services
1		2	3	4	5	6	7	8	9	10
1998		49 360 446	20 231 861	6 182 197	8 829 850	- 71 820	17 083 615	24 672 961	21 915 363	5 652 856
1999		47 287 433	20 102 405	6 918 804	8 275 070	83 278	17 579 981	23 539 140	22 961 408	6 249 836
2000		48 972 396	19 706 940	6 045 116	5 618 314	73 717	20 380 421	28 799 077	24 392 564	7 258 625
2001		49 704 405	19 797 608	6 108 172	5 118 950	18 762	18 472 950	32 565 397	24 549 842	7 827 592
2002		54 818 745	20 222 476	6 322 928	5 800 686	240 156	18 925 409	38 240 607	25 985 045	8 948 473
2003		63 564 343	20 670 477	6 828 273	8 981 935	318 043	20 700 104	44 991 348	29 164 701	9 761 136
2004 [®]		82 685 465	22 734 965	7 095 344	13 391 998	374 992	22 561 083	64 988 798	36 982 850	11 478 864
1998	1	11 930 014	5 174 498	1 135 707	2 193 059	- 14 185	3 139 380	6 755 987	5 151 377	1 303 055
	2	12 601 178	5 021 167	1 696 014	2 224 970	- 19 064	4 385 967	6 150 481	5 415 150	1 443 207
	3	12 614 367	5 164 047	1 421 564	2 086 381	- 19 939	5 044 352	6 142 886	5 817 297	1 407 626
	4	12 214 887	4 872 149	1 928 912	2 325 440	- 18 631	4 513 916	5 623 607	5 531 539	1 498 967
1999	1	11 330 882	5 140 900	1 224 635	2 232 991	18 432	3 700 336	6 127 200	5 702 339	1 411 273
	2	11 145 060	4 875 403	1 738 295	1 756 997	21 288	4 444 604	5 433 007	5 601 295	1 523 240
	3	11 742 756	5 055 636	1 557 713	1 985 683	22 483	5 152 744	5 680 801	6 096 083	1 616 221
	4	13 068 734	5 030 467	2 398 161	2 299 399	21 074	4 282 297	6 298 131	5 561 692	1 699 103
2000	1	11 271 528	4 949 478	1 032 925	1 285 560	14 564	4 022 333	6 783 186	5 219 233	1 597 285
	2	11 678 777	4 750 500	1 637 598	1 427 568	19 491	5 252 116	6 523 719	6 136 870	1 795 346
	3	13 017 268	5 153 324	1 366 217	1 215 229	20 596	5 994 822	7 945 027	6 768 867	1 909 081
	4	13 004 822	4 853 638	2 008 376	1 689 957	19 065	5 111 150	7 547 145	6 267 595	1 956 914
2001	1	11 295 949	5 015 663	1 057 163	1 248 545	3 945	3 639 576	7 830 792	5 674 568	1 825 165
	2	11 857 329	4 856 706	1 629 343	1 159 770	5 082	4 876 905	7 520 187	6 253 966	1 936 697
	3	12 957 768	5 094 690	1 382 915	1 114 258	5 101	5 307 969	8 530 126	6 444 973	2 032 317
	4	13 593 359	4 830 548	2 038 752	1 596 378	4 635	4 648 500	8 684 293	6 176 334	2 033 413
2002	1	12 218 950	5 071 278	1 110 323	1 306 224	47 843	3 563 344	8 734 180	5 586 302	2 027 941
	2	13 188 650	4 939 437	1 583 111	1 345 032	62 746	4 917 642	9 144 805	6 650 528	2 153 596
	3	13 819 848	5 225 787	1 479 284	1 271 956	66 986	5 478 065	9 521 810	6 904 133	2 319 907
	4	15 591 297	4 985 974	2 150 209	1 877 474	62 580	4 966 358	10 839 812	6 844 082	2 447 030
2003	1	14 484 273	5 172 802	1 275 872	1 509 134	63 040	4 053 280	11 111 934	6 291 560	2 410 229
	2	12 877 569	4 873 781	1 747 292	1 756 532	81 255	5 363 771	7 793 554	6 567 709	2 170 906
	3	16 977 916	5 406 278	1 492 591	2 387 380	87 948	5 865 683	12 346 809	8 025 467	2 583 306
	4	19 224 586	5 217 616	2 312 518	3 328 890	85 799	5 417 370	13 739 051	8 279 965	2 596 694
2004	1 [®]	18 121 202	5 481 912	1 338 809	2 315 388	74 112	4 267 873	14 940 741	7 842 713	2 454 920
	2 [®]	19 480 819	5 527 638	1 860 044	2 592 963	95 359	5 848 739	15 380 862	8 971 044	2 853 741
	3 [®]	21 774 927	5 956 296	1 498 037	3 338 281	107 069	6 725 244	17 292 862	10 239 280	2 903 581
	4 [®]	23 308 517	5 769 119	2 398 454	5 145 366	98 452	5 719 227	17 374 333	9 929 813	3 266 622

a 本地生產總值 / PIB / GDP = 3 + 4 + 5 + 6 + 7 + 8 - 9 - 10

3. 1999年至2004年以當年價格估算之本地生產總值及其主要支出項目的名義變動率

Taxas de variação homóloga do Produto Interno Bruto e principais componentes da despesa a preços correntes, 1999-2004

Year-on-year growth rates of Gross Domestic Product and main components of expenditure at current prices, 1999-2004

%

年份	季	本地生產總值	私人消費支出	政府最終消費支出	固定資本形成總額	庫存變化	貨物出口	服務出口	貨物進口	服務進口	
Ano	Trimestre	Produto Interno Bruto	Despesa de consumo privado	Despesa de consumo final do governo	Formação bruta de capital fixo	Varição de existências	Exportações de bens	Exportações de serviços	Importações de bens	Importações de serviços	
Year	Quarter	Gross Domestic Product	Private consumption expenditure	Government final consumption expenditure	Gross fixed capital formation	Changes in inventories	Exports of goods	Exports of services	Imports of goods	Imports of services	
		1	2	3	4	5	6	7	8	9	10
1999		- 4.2	- 0.6	11.9	- 6.3	216.0	2.9	- 4.6	4.8	10.6	
2000		3.6	- 2.0	- 12.6	- 32.1	- 11.5	15.9	22.3	6.2	16.1	
2001		1.5	0.5	1.0	- 8.9	- 74.5	- 9.4	13.1	0.6	7.8	
2002		10.3	2.1	3.5	13.3	1 180.0	2.4	17.4	5.8	14.3	
2003		16.0	2.2	8.0	54.8	32.4	9.4	17.7	12.2	9.1	
2004 ^⑥		30.1	10.0	3.9	49.1	17.9	9.0	44.4	26.8	17.6	
1999	1	- 5.0	- 0.6	7.8	1.8	229.9	17.9	- 9.3	10.7	8.3	
	2	- 11.6	- 2.9	2.5	- 21.0	211.7	1.3	- 11.7	3.4	5.5	
	3	- 6.9	- 2.1	9.6	- 4.8	212.8	2.1	- 7.5	4.8	14.8	
	4	7.0	3.2	24.3	- 1.1	213.1	- 5.1	12.0	0.5	13.4	
2000	1	- 0.5	- 3.7	- 15.7	- 42.4	- 21.0	8.7	10.7	- 8.5	13.2	
	2	4.8	- 2.6	- 5.8	- 18.7	- 8.4	18.2	20.1	9.6	17.9	
	3	10.9	1.9	- 12.3	- 38.8	- 8.4	16.3	39.9	11.0	18.1	
	4	- 0.5	- 3.5	- 16.3	- 26.5	- 9.5	19.4	19.8	12.7	15.2	
2001	1	0.2	1.3	2.3	- 2.9	- 72.9	- 9.5	15.4	8.7	14.3	
	2	1.5	2.2	- 0.5	- 18.8	- 73.9	- 7.1	15.3	1.9	7.9	
	3	- 0.5	- 1.1	1.2	- 8.3	- 75.2	- 11.5	7.4	- 4.8	6.5	
	4	4.5	- 0.5	1.5	- 5.5	- 75.7	- 9.1	15.1	- 1.5	3.9	
2002	1	8.2	1.1	5.0	4.6	1 112.7	- 2.1	11.5	- 1.6	11.1	
	2	11.2	1.7	- 2.8	16.0	1 134.7	0.8	21.6	6.3	11.2	
	3	6.7	2.6	7.0	14.2	1 213.3	3.2	11.6	7.1	14.2	
	4	14.7	3.2	5.5	17.6	1 250.3	6.8	24.8	10.8	20.3	
2003	1	18.5	2.0	14.9	15.5	31.8	13.7	27.2	12.6	18.9	
	2	- 2.4	- 1.3	10.4	30.6	29.5	9.1	- 14.8	- 1.2	0.8	
	3	22.9	3.5	0.9	87.7	31.3	7.1	29.7	16.2	11.4	
	4	23.3	4.6	7.5	77.3	37.1	9.1	26.7	21.0	6.1	
2004	1 ^⑥	25.1	6.0	4.9	53.4	17.6	5.3	34.5	24.7	1.9	
	2 ^⑥	51.3	13.4	6.5	47.6	17.4	9.0	97.4	36.6	31.5	
	3 ^⑥	28.3	10.2	0.4	39.8	21.7	14.7	40.1	27.6	12.4	
	4 ^⑥	21.2	10.6	3.7	54.6	14.7	5.6	26.5	19.9	25.8	

季度本地生產總值
 PRODUTO INTERNO BRUTO TRIMESTRAL
 QUARTERLY GROSS DOMESTIC PRODUCT

二零零四年第四季 統計暨普查局 四號刊
 4^oTRIMESTRE/2004 DSEC N^o 4
 4th QUARTER 2004 DSEC No. 4

4. 1998年至2004年以不變(2002年)價格估算之本地生產總值及其主要支出項目

Produto Interno Bruto e principais componentes da despesa a preços constantes (2002), 1998-2004

Gross Domestic Product and main components of expenditure at constant (2002) prices, 1998-2004

		千澳門元 1000 MOP								
年份	季	本地生產總值	私人消費支出	政府最終消費支出	固定資本形成總額	庫存變化	貨物出口	服務出口	貨物進口	服務進口
Ano	Trimestre	Produto Interno Bruto	Despesa de consumo privado	Despesa de consumo final do governo	Formação bruta de capital fixo	Variação de existências	Exportações de bens	Exportações de serviços	Importações de bens	Importações de serviços
Year	Quarter	Gross Domestic Product	Private consumption expenditure	Government final consumption expenditure	Gross fixed capital formation	Changes in inventories	Exports of goods	Exports of services	Imports of goods	Imports of services
1		2	3	4	5	6	7	8	9	10
1998		46 862 141	18 718 917	6 266 314	7 742 829	- 69 102	16 108 482	24 275 451	20 974 852	5 205 898
1999		45 756 819	19 181 713	7 082 229	7 883 604	81 426	16 689 573	23 413 389	22 559 444	6 015 670
2000		48 386 399	18 996 874	6 159 955	5 505 331	68 298	19 034 799	28 718 795	22 973 910	7 123 743
2001		49 783 977	19 351 375	6 166 151	5 301 510	17 933	17 936 446	32 512 311	23 763 600	7 738 147
2002		54 818 745	20 222 476	6 322 928	5 800 686	240 156	18 925 409	38 240 607	25 985 045	8 948 473
2003		62 581 691	20 949 873	6 754 147	8 449 795	323 540	20 696 608	44 780 991	29 445 278	9 927 984
2004 [®]		80 089 012	22 753 153	6 939 936	11 555 172	368 617	22 422 708	64 024 470	36 410 738	11 564 307
1998	1	11 189 824	4 742 339	1 162 327	1 826 121	- 13 246	2 751 892	6 608 046	4 684 764	1 202 892
	2	12 190 267	4 633 223	1 715 400	1 853 828	- 17 518	4 170 569	6 066 087	4 915 119	1 316 202
	3	11 853 697	4 789 443	1 440 938	1 897 378	- 19 825	4 836 205	6 057 831	5 858 001	1 290 273
	4	11 628 353	4 553 912	1 947 649	2 165 502	- 18 514	4 349 816	5 543 487	5 516 968	1 396 531
1999	1	10 837 547	4 849 135	1 264 261	2 224 234	18 570	3 478 538	6 065 915	5 711 444	1 351 662
	2	10 761 401	4 644 978	1 784 409	1 622 956	21 295	4 352 104	5 406 824	5 610 239	1 460 927
	3	11 401 607	4 856 201	1 592 449	1 873 697	21 886	4 927 573	5 668 567	5 979 141	1 559 625
	4	12 756 264	4 831 398	2 441 109	2 162 717	19 674	3 931 358	6 272 084	5 258 620	1 643 456
2000	1	10 740 974	4 752 923	1 074 958	1 213 695	13 935	3 537 398	6 767 304	5 049 764	1 569 475
	2	11 465 103	4 578 509	1 674 979	1 398 122	18 150	4 883 638	6 514 731	5 842 316	1 760 708
	3	13 096 407	4 976 926	1 390 416	1 205 031	19 188	5 851 792	7 919 871	6 405 431	1 861 387
	4	13 083 915	4 688 516	2 019 602	1 688 484	17 026	4 761 972	7 516 889	5 676 400	1 932 174
2001	1	11 282 722	4 871 443	1 084 137	1 294 687	3 661	3 377 555	7 811 048	5 358 132	1 801 676
	2	11 966 772	4 726 865	1 647 076	1 179 042	4 790	4 790 363	7 507 955	5 977 161	1 912 159
	3	13 030 035	4 982 766	1 390 350	1 181 552	4 915	5 235 638	8 513 314	6 274 373	2 004 128
	4	13 504 448	4 770 300	2 044 588	1 646 229	4 566	4 532 890	8 679 994	6 153 934	2 020 184
2002	1	12 147 810	5 033 828	1 115 655	1 321 385	47 520	3 405 422	8 719 508	5 480 716	2 014 792
	2	13 146 656	4 943 735	1 584 953	1 358 315	63 647	4 989 931	9 143 130	6 786 103	2 150 952
	3	13 962 679	5 235 407	1 475 577	1 267 192	67 258	5 644 203	9 535 028	6 947 136	2 314 850
	4	15 561 600	5 009 505	2 146 744	1 853 794	61 732	4 885 853	10 842 942	6 771 090	2 467 880
2003	1	14 118 697	5 218 974	1 266 971	1 417 663	63 757	3 817 954	11 057 915	6 297 920	2 426 618
	2	12 740 102	4 933 563	1 730 487	1 673 097	83 180	5 480 248	7 810 952	6 754 243	2 217 182
	3	17 001 356	5 501 595	1 474 866	2 279 602	88 805	6 032 358	12 311 839	8 051 642	2 636 066
	4	18 721 537	5 295 742	2 281 822	3 079 433	87 798	5 366 048	13 600 284	8 341 472	2 648 118
2004	1 [®]	17 822 041	5 541 401	1 308 523	2 049 764	73 573	4 327 752	14 760 220	7 752 684	2 486 509
	2 [®]	19 039 054	5 560 425	1 821 815	2 305 882	93 854	5 837 634	15 182 367	8 890 080	2 872 842
	3 [®]	21 123 981	5 937 934	1 461 797	2 908 249	105 677	6 655 740	17 044 574	10 081 604	2 908 385
	4 [®]	22 103 936	5 713 393	2 347 801	4 291 278	95 514	5 601 582	17 037 309	9 686 371	3 296 571

5. 1999年至2004年以不變(2002年)價格估算之本地生產總值及其主要支出項目的實質增長率

Taxas de variação homóloga do Produto Interno Bruto e principais componentes da despesa a preços constantes (2002), 1999-2004

Year-on-year growth rates of Gross Domestic Product and main components of expenditure at constant (2002) prices, 1999-2004

		%								
年份	季	本地生產總值	私人消費支出	政府最終消費支出	固定資本形成總額	庫存變化	貨物出口	服務出口	貨物進口	服務進口
Ano	Trimestre	Produto Interno Bruto	Despesa de consumo privado	Despesa de consumo final do governo	Formação bruta de capital fixo	Variação de existências	Exportações de bens	Exportações de serviços	Importações de bens	Importações de serviços
Year	Quarter	Gross Domestic Product	Private consumption expenditure	Government final consumption expenditure	Gross fixed capital formation	Changes in inventories	Exports of goods	Exports of services	Imports of goods	Imports of services
1	2	3	4	5	6	7	8	9	10	11
1999		- 2.4	2.5	13.0	1.8	217.8	3.6	- 3.6	7.6	15.6
2000		5.7	- 1.0	- 13.0	- 30.2	- 16.1	14.1	22.7	1.8	18.4
2001		2.9	1.9	0.1	- 3.7	- 73.7	- 5.8	13.2	3.4	8.6
2002		10.1	4.5	2.5	9.4	1 239.2	5.5	17.6	9.3	15.6
2003		14.2	3.6	6.8	45.7	34.7	9.4	17.1	13.3	10.9
2004 [®]		28.0	8.6	2.8	36.8	13.9	8.3	43.0	23.7	16.5
1999	1	- 3.1	2.3	8.8	21.8	240.2	26.4	- 8.2	21.9	12.4
	2	- 11.7	0.3	4.0	- 12.5	221.6	4.4	- 10.9	14.1	11.0
	3	- 3.8	1.4	10.5	- 1.2	210.4	1.9	- 6.4	2.1	20.9
	4	9.7	6.1	25.3	- 0.1	206.3	- 9.6	13.1	- 4.7	17.7
2000	1	- 0.9	- 2.0	- 15.0	- 45.4	- 25.0	1.7	11.6	- 11.6	16.1
	2	6.5	- 1.4	- 6.1	- 13.9	- 14.8	12.2	20.5	4.1	20.5
	3	14.9	2.5	- 12.7	- 35.7	- 12.3	18.8	39.7	7.1	19.3
	4	2.6	- 3.0	- 17.3	- 21.9	- 13.5	21.1	19.8	7.9	17.6
2001	1	5.0	2.5	0.9	6.7	- 73.7	- 4.5	15.4	6.1	14.8
	2	4.4	3.2	- 1.7	- 15.7	- 73.6	- 1.9	15.2	2.3	8.6
	3	- 0.5	0.1	0	- 1.9	- 74.4	- 10.5	7.5	- 2.0	7.7
	4	3.2	1.7	1.2	- 2.5	- 73.2	- 4.8	15.5	8.4	4.6
2002	1	7.7	3.3	2.9	2.1	1 198.0	0.8	11.6	2.3	11.8
	2	9.9	4.6	- 3.8	15.2	1 228.6	4.2	21.8	13.5	12.5
	3	7.2	5.1	6.1	7.2	1 268.4	7.8	12.0	10.7	15.5
	4	15.2	5.0	5.0	12.6	1 251.9	7.8	24.9	10.0	22.2
2003	1	16.2	3.7	13.6	7.3	34.2	12.1	26.8	14.9	20.4
	2	- 3.1	- 0.2	9.2	23.2	30.7	9.8	- 14.6	- 0.5	3.1
	3	21.8	5.1	0	79.9	32.0	6.9	29.1	15.9	13.9
	4	20.3	5.7	6.3	66.1	42.2	9.8	25.4	23.2	7.3
2004	1 [®]	26.2	6.2	3.3	44.6	15.4	13.4	33.5	23.1	2.5
	2 [®]	49.4	12.7	5.3	37.8	12.8	6.5	94.4	31.6	29.6
	3 [®]	24.2	7.9	- 0.9	27.6	19.0	10.3	38.4	25.2	10.3
	4 [®]	18.1	7.9	2.9	39.4	8.8	4.4	25.3	16.1	24.5

以下統計表可在本局網頁下載

Os quadros abaixo indicados podem ser consultados na homepage da DSEC
The following statistical tables can be downloaded from our website

6. 1998 年至 2004 年本地生產總值及其主要支出項目之名義結構
Estrutura nominal do Produto Interno Bruto e das principais componentes da despesa, 1998 - 2004
Nominal structure of Gross Domestic Product and main components of expenditure, 1998 - 2004
7. 1998 年至 2004 年本地生產總值及其主要支出項目之實質結構(2002 年=100)
Estrutura real (ano: 2002=100) do Produto Interno Bruto e das principais componentes da despesa, 1998 - 2004
Real structure (year: 2002=100) of Gross Domestic Product and main components of expenditure, 1998 -2004
8. 1998 年至 2004 年以當年價格估算之私人消費支出
Despesa de consumo privado a preços correntes, 1998 - 2004
Private consumption expenditure at current prices, 1998 - 2004
9. 1999 年至 2004 年以當年價格估算之私人消費支出的名義變動率
Taxas de variação homóloga de despesa de consumo privado a preços correntes, 1999 - 2004
Year-on-year growth rates of private consumption expenditure at current prices, 1999 - 2004
10. 1998 年至 2004 年以不變(2002 年)價格估算之私人消費支出
Despesa de consumo privado a preços constantes (2002), 1998 - 2004
Private consumption expenditure at constant (2002) prices, 1998 - 2004
11. 1999 年至 2004 年以不變(2002 年)價格估算之私人消費支出的實質變動率
Taxas de variação homóloga de despesa de consumo privado a preços constantes (2002), 1999 - 2004
Year-on-year growth rates of private consumption expenditure at constant (2002) prices, 1999 - 2004
12. 1998 年至 2004 年以當年價格估算之政府最終消費支出
Despesa de consumo final do governo a preço correntes, 1998 - 2004
Government final consumption expenditure at current prices, 1998 - 2004

13. 1999 年至 2004 年以當年價格估算之政府最終消費支出的名義變動率
Taxas de variação homóloga de despesa de consumo final do governo a preço correntes, 1999 - 2004
Year-on-year growth rates of government final consumption expenditure at current prices, 1999 - 2004
14. 1998 年至 2004 年以不變(2002 年)價格估算之政府最終消費支出
Despesa de consumo final do governo a preço constantes (2002), 1998 - 2004
Government final consumption expenditure at constant (2002) prices, 1998 - 2004
15. 1999 年至 2004 年以不變(2002 年)價格估算之政府最終消費支出的實質變動率
Taxas de variação homóloga de despesa de consumo final do governo a preço constantes (2002), 1999 - 2004
Year-on-year growth rates of government final consumption expenditure at constant (2002) prices, 1999-2004
16. 1998 年至 2004 年以當年價格估算之固定資本形成總額
Formação bruta de capita fixo a preços correntes, 1998 - 2004
Gross fixed capital formation at current prices, 1998 - 2004
17. 1999 年至 2004 年以當年價格估算之固定資本形成總額的名義變動率
Taxas de variação homóloga de formação bruta de capita fixo a preços correntes, 1999 - 2004
Year-on-year growth rates of gross fixed capital formation at current prices, 1999 - 2004
18. 1998 年至 2004 年以不變(2002 年)價格估算之固定資本形成總額
Formação bruta de capita fixo a preços constantes (2002), 1998 - 2004
Gross fixed capital formation at constant (2002) prices, 1998 - 2004
19. 1999 年至 2004 年以不變(2002 年)價格估算之固定資本形成總額的實質變動率
Taxas de variação homóloga de formação bruta de capita fixo a preços constantes (2002), 1999 - 2004
Year-on-year growth rates of gross fixed capital formation at constant (2002) prices, 1999 - 2004
20. 1998 年至 2004 年以當年價格估算之出口
Exportações a preços correntes, 1998 - 2004
Exports at current prices, 1998 - 2004
21. 1999 年至 2004 年以當年價格估算之出口的名義變動率
Taxas de variação homóloga de exportações a preços correntes, 1999 - 2004
Year-on-year growth rates of exports at current prices, 1999 - 2004

22. 1998 年至 2004 年以不變(2002 年)價格估算之出口
Exportações a preços constantes (2002), 1998 - 2004
Exports at constant (2002) prices, 1998 - 2004
23. 1999 年至 2004 年以不變(2002 年)價格估算之出口的實質變動率
Taxas de variação homóloga de exportações a preços constantes (2002), 1999 - 2004
Year-on-year growth rates of exports at constant (2002) prices, 1999 - 2004
24. 1998 年至 2004 年以當年價格估算之進口
Importações a preços correntes, 1998 - 2004
Imports at current prices, 1998 - 2004
25. 1999 年至 2004 年以當年價格估算之進口的名義增長率
Taxas de variação homóloga de importações a preços correntes, 1999 - 2004
Year-on-year growth rates of imports at current prices, 1999 - 2004
26. 1998 年至 2004 年以不變(2002 年)價格估算之進口
Importações a preços constantes (2002), 1998 - 2004
Imports at constant (2002) prices, 1998 - 2004
27. 1999 年至 2004 年以不變(2002 年)價格估算之進口的實質增長率
Taxas de variação homóloga de importações a preços constantes (2002), 1999 - 2004
Year-on-year growth rates of imports at constant (2002) prices, 1999 - 2004