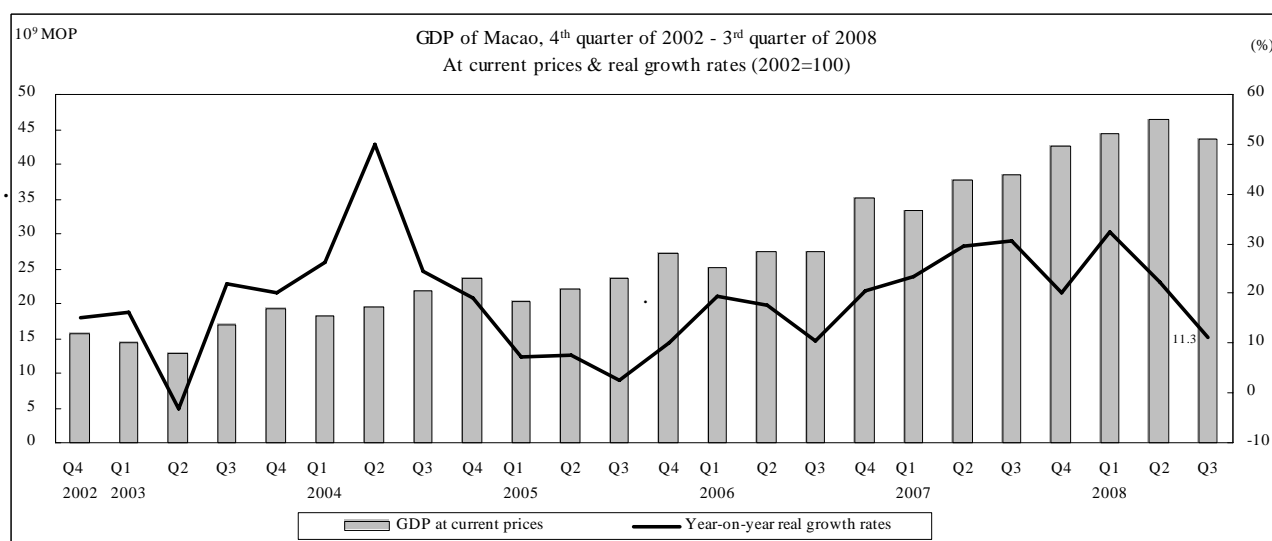


## QUARTERLY GROSS DOMESTIC PRODUCT

3<sup>rd</sup> QUARTER 2008

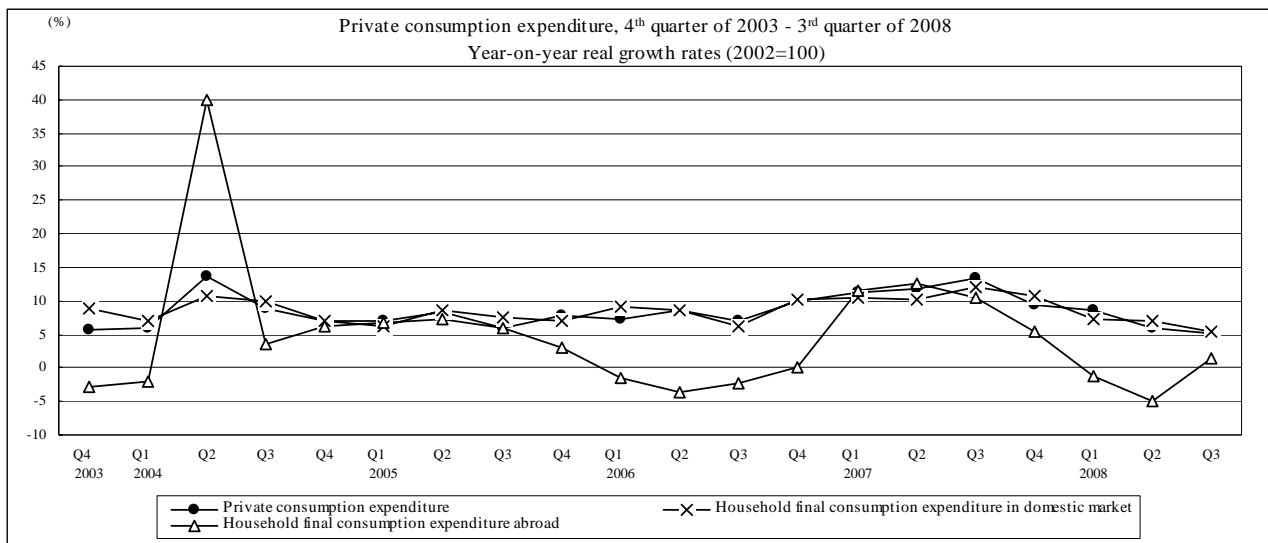
No.3

In the third quarter of 2008, gross gaming revenue (excluding gratuities) grew at a slower pace of 27.6% in nominal terms, far lower than the 61.8% and 47.6% increase in the first and the second quarters; total visitor spending (excluding gaming expenses) rose merely by 4.2%<sup>a</sup>; gross fixed capital formation dropped by 25.2% upon shrinking investment in construction and equipment; meanwhile, exports of goods fell substantially by 26.5%. Incorporating all relevant data, GDP expanded by 11.3% in real terms in the third quarter; in addition, real GDP growth for the first and the second quarters was revised upward from 31.6% and 21.1% to 32.3% and 22.2% respectively, and that for 2007 was revised downward from 27.3% to 25.6%.

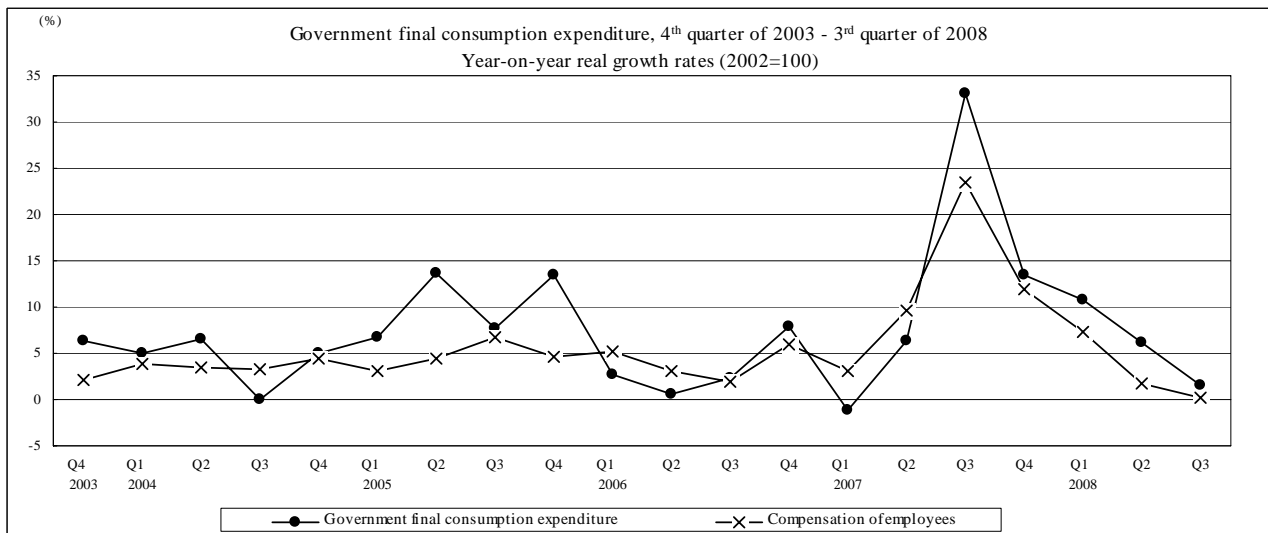


In terms of major GDP components, private consumption expenditure increased by 5.1% in the third quarter of 2008, moderating from the 5.9% growth in the second quarter. Household final consumption expenditure in the domestic market rose by 5.3%, and that abroad grew by 1.3%, with the expenditure in Mainland China amounting to MOP 665 million.

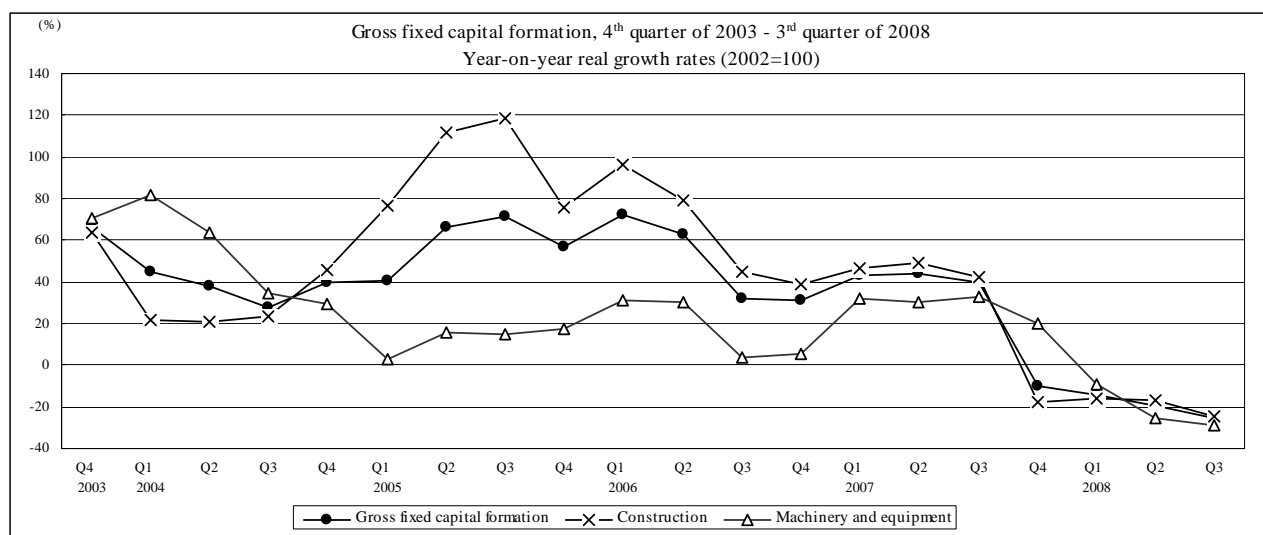
<sup>a</sup> The rates of change mentioned in the text refer to the year-on-year change in real terms, unless stated otherwise.



Government final consumption expenditure increased by 1.6%, lower than the 6.2% rise in the second quarter, with compensation of employees going up by 0.1% and net purchases of goods and services rising by 6.7%.

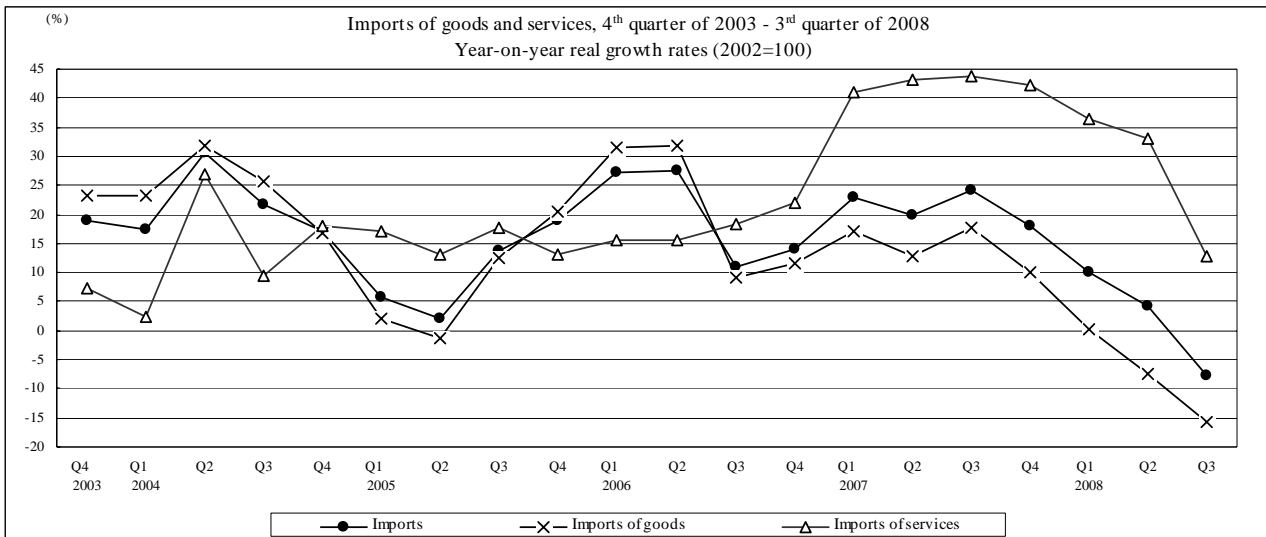
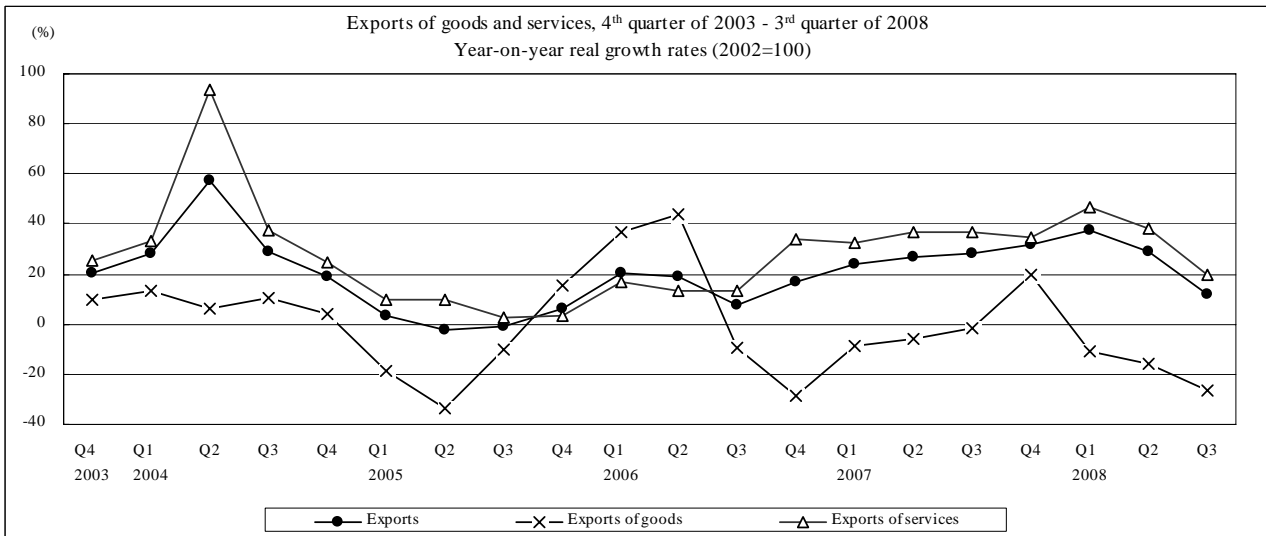


Gross fixed capital formation, a gauge of investment, has declined for four consecutive quarters, down substantially by 25.2% in the third quarter, as against the 19.1% drop in the second quarter. In the private sector, total investment contracted by 24.1%, on account of the 22.3% decrease in construction investment and the 30.4% drop in equipment investment. Total government investment fell by 46.5%, in which construction investment plunged by 58.1%, while equipment investment rose by 22.0%. Integrating data on both sectors, overall investment in construction shrank by 24.2% in the third quarter of 2008, slowing further from the 17.2% drop in the second quarter; overall investment in equipment plummeted by 28.8%, down from the 25.2% drop in the second quarter.



In terms of visible trade, merchandise exports continued to fall in the third quarter, with the total value of exports declining by 19.6% in nominal terms and 26.5% in real terms, down from the 13.5% and 15.8% decrease in the second quarter. Analysed by major destination, merchandise exports to the United States, the European Union and Mainland China went down by 20.9%, 66.5% and 32.7% respectively in nominal terms. Total value of merchandise imports<sup>b</sup> fell by 15.7% in real terms. As regards invisible trade (exports of services), exports of gaming services went up by 27.5% and total visitor spending (excluding gaming expenses) rose slightly by 4.2% after deducting the 12.5% increase in tourist prices. Integrating the principal data on the exports of services, overall exports of services recorded an increase of 19.9%, lower than the 38.0% growth in the previous quarter; moreover, imports of services grew by 12.9%, down from the 33.0% rise in the second quarter.

<sup>b</sup> The value of imports of goods has been adjusted by means of equilibrium analysis on supply and use; therefore, the growth rates are not identical to those published in the *External Merchandise Trade Statistics* of DSEC.



1. 1998年至2008年之本地生產總值、人均本地生產總值及本地生產總值之平減物價指數  
 Produto Interno Bruto, Produto Interno Bruto per capita e deflator implícito do Produto Interno Bruto, 1998 - 2000  
 Gross Domestic Product, per-capita Gross Domestic Product and implicit deflator of Gross Domestic Product, 1998 - 2000

年份	季	本地生產總值， 以當年價格計算	本地生產總值， 以不變(2002年) 價格計算	本地生產總值之 平減物價指數 (2002 年=100)	人均本地生產總值，以 當年價格計算	人均本地生產總值， 以不變(2002年) 價格計算
Ano	Trimestre	Produto Interno Bruto, a preços correntes	Produto Interno Bruto, a preços constantes (2002)	Deflator implícito (ano:2002=100) do Produto Interno Bruto	Produto Interno Bruto per capita , a preços correntes	Produto Interno Bruto per capita , a preços constantes (2002)
Year	Quarter	Gross Domestic Product, at current prices	Gross Domestic Product, at constant (2002) prices	Implicit deflator (year:2002=100) of Gross Domestic Product	Per-capita Gross Domestic Product, at current prices	Per-capita Gross Domestic Product, at constant (2002) prices
		千澳門元 '000 MOP	千澳門元 '000 MOP		澳門元 MOP	澳門元 MOP
1		2	3	4	5	6
1998		49 360 446 (-7.3)	46 862 141 (-4.6)	105.3 (-2.8)	116 884 (-8.4)	110 968 (-5.7)
1999		47 287 433 (-4.2)	45 756 819 (-2.4)	103.3 (-1.9)	110 637 (-5.3)	107 056 (-3.5)
2000		48 972 396 (3.6)	48 386 399 (5.7)	101.2 (-2.1)	113 739 (2.8)	112 378 (5.0)
2001		49 704 405 (1.5)	49 783 977 (2.9)	99.8 (-1.4)	114 501 (0.7)	114 684 (2.1)
2002		54 818 745 (10.3)	54 818 745 (10.1)	100.0 (0.2)	125 058 (9.2)	125 058 (9.0)
2003		63 566 339 (16.0)	62 583 576 (14.2)	101.6 (1.6)	142 825 (14.2)	140 616 (12.4)
2004		82 966 362 (30.5)	80 349 189 (28.4)	103.3 (1.7)	181 580 (27.1)	175 852 (25.1)
2005		92 950 909 (12.0)	85 886 488 (6.9)	108.2 (4.8)	195 214 (7.5)	180 377 (2.6)
2006 <sup>r</sup>		115 252 615 (24.0)	100 499 650 (17.0)	114.7 (6.0)	230 812 (18.2)	201 267 (11.6)
2007 <sup>r</sup>		152 024 905 (31.9)	126 201 083 (25.6)	120.5 (5.0)	289 153 (25.3)	240 036 (19.3)
2001	1	11 295 949 (0.2)	11 282 722 (5.0)	100.1 (-4.6)	.. ..	.. ..
	2	11 857 329 (1.5)	11 966 772 (4.4)	99.1 (-2.7)	.. ..	.. ..
	3	12 957 768 (-0.5)	13 030 035 (-0.5)	99.4 (o)	.. ..	.. ..
	4	13 593 359 (4.5)	13 504 448 (3.2)	100.7 (1.3)	.. ..	.. ..
2002	1	12 218 950 (8.2)	12 147 810 (7.7)	100.6 (0.5)	.. ..	.. ..
	2	13 188 650 (11.2)	13 146 656 (9.9)	100.3 (1.2)	.. ..	.. ..
	3	13 819 848 (6.7)	13 962 679 (7.2)	99.0 (-0.5)	.. ..	.. ..
	4	15 591 297 (14.7)	15 561 600 (15.2)	100.2 (-0.5)	.. ..	.. ..
2003	1	14 484 623 (18.5)	14 119 042 (16.2)	102.6 (2.0)	.. ..	.. ..
	2	12 878 083 (-2.4)	12 740 603 (-3.1)	101.1 (0.8)	.. ..	.. ..
	3	16 978 384 (22.9)	17 001 791 (21.8)	99.9 (0.9)	.. ..	.. ..
	4	19 225 248 (23.3)	18 722 140 (20.3)	102.7 (2.5)	.. ..	.. ..
2004	1	18 121 645 (25.1)	17 818 686 (26.2)	101.7 (-0.9)	.. ..	.. ..
	2	19 568 068 (51.9)	19 122 382 (50.1)	102.3 (1.2)	.. ..	.. ..
	3	21 812 430 (28.5)	21 156 322 (24.4)	103.1 (3.2)	.. ..	.. ..
	4	23 464 219 (22.0)	22 251 799 (18.9)	105.4 (2.7)	.. ..	.. ..
2005	1	20 179 118 (11.4)	19 108 654 (7.2)	105.6 (3.8)	.. ..	.. ..
	2	21 956 951 (12.2)	20 574 615 (7.6)	106.7 (4.3)	.. ..	.. ..
	3	23 519 809 (7.8)	21 699 284 (2.6)	108.4 (5.1)	.. ..	.. ..
	4	27 295 031 (16.3)	24 503 935 (10.1)	111.4 (5.6)	.. ..	.. ..
2006	1 <sup>r</sup>	25 224 939 (25.0)	22 854 914 (19.6)	110.4 (4.5)	.. ..	.. ..
	2 <sup>r</sup>	27 384 924 (24.7)	24 168 544 (17.5)	113.3 (6.2)	.. ..	.. ..
	3 <sup>r</sup>	27 532 466 (17.1)	23 983 126 (10.5)	114.8 (5.9)	.. ..	.. ..
	4 <sup>r</sup>	35 110 287 (28.6)	29 493 067 (20.4)	119.0 (6.9)	.. ..	.. ..
2007	1 <sup>r</sup>	33 211 374 (31.7)	28 222 468 (23.5)	117.7 (6.6)	.. ..	.. ..
	2 <sup>r</sup>	37 693 069 (37.6)	31 276 048 (29.4)	120.5 (6.4)	.. ..	.. ..
	3 <sup>r</sup>	38 432 723 (39.6)	31 280 289 (30.4)	122.9 (7.0)	.. ..	.. ..
	4 <sup>r</sup>	42 687 739 (21.6)	35 422 278 (20.1)	120.5 (1.2)	.. ..	.. ..
2008	1 <sup>r</sup>	44 232 962 (33.2)	37 337 053 (32.3)	118.5 (0.7)	.. ..	.. ..
	2 <sup>r</sup>	46 379 909 (23.0)	38 222 688 (22.2)	121.3 (0.7)	.. ..	.. ..
	3 <sup>@</sup>	43 574 275 (13.4)	34 816 219 (11.3)	125.2 (1.9)	.. ..	.. ..

r: 更正資料 Dado rectificado Revised figures  
 @: 數字在日後會作出修訂 Dado a ser revisto no futuro Figures are subject to revisions later on

2. 1998年至2008年以當年價格估算之本地生產總值及其主要支出項目

Produto Interno Bruto e principais componentes da despesa a preços correntes, 1998-2008

Gross Domestic Product and main components of expenditure at current prices, 1998-2008

千澳門元  
'000 MOP

年份	季	本地生產總值 <sup>a</sup>	私人消費支出	政府最終消費支出	固定資本形成總額	庫存變化	貨物出口	服務出口	貨物進口	服務進口
Ano	Trimestre	Produto Interno Bruto <sup>a</sup>	Despesa de consumo privado	Despesa de consumo final do governo	Formação bruta de capital fixo	Variação de existências	Exportações de bens	Exportações de serviços	Importações de bens	Importações de serviços
Year	Quarter	Gross Domestic Product <sup>a</sup>	Private consumption expenditure	Government final consumption expenditure	Gross fixed capital formation	Changes in inventories	Exports of goods	Exports of services	Imports of goods	Imports of services
1		2	3	4	5	6	7	8	9	10
1998		49 360 446	20 231 861	6 182 197	8 829 850	- 71 820	17 083 615	24 672 961	21 915 363	5 652 856
1999		47 287 433	20 102 405	6 918 804	8 275 070	83 278	17 579 981	23 539 140	22 961 408	6 249 836
2000		48 972 396	19 706 940	6 045 116	5 618 314	73 717	20 380 421	28 799 077	24 392 564	7 258 625
2001		49 704 405	19 797 608	6 108 172	5 118 950	18 762	18 472 950	32 565 397	24 549 842	7 827 592
2002		54 818 745	20 222 476	6 322 928	5 800 686	240 156	18 925 409	38 240 607	25 985 045	8 948 473
2003		63 566 339	20 670 477	6 830 034	8 981 935	318 502	20 700 104	44 991 347	29 164 701	9 761 360
2004		82 966 362	22 777 201	7 200 391	13 422 104	599 415	22 561 083	64 712 378	37 092 900	11 213 310
2005		92 950 909	25 147 842	8 402 377	24 767 947	647 133	19 823 343	69 029 634	41 872 090	12 995 277
2006 <sup>f</sup>		115 252 615	28 158 952	8 991 375	39 329 993	1 018 343	20 461 268	84 335 377	51 599 844	15 442 849
2007 <sup>f</sup>		152 024 905	32 977 349	10 959 229	54 186 888	933 139	20 430 570	115 875 436	60 937 059	22 400 647
2001	1	11 295 949	5 015 663	1 057 163	1 248 545	3 945	3 639 576	7 830 792	5 674 568	1 825 165
	2	11 857 329	4 856 706	1 629 343	1 159 770	5 082	4 876 905	7 520 187	6 253 966	1 936 697
	3	12 957 768	5 094 690	1 382 915	1 114 258	5 101	5 307 969	8 530 126	6 444 973	2 032 317
	4	13 593 359	4 830 548	2 038 752	1 596 378	4 635	4 648 500	8 684 293	6 176 334	2 033 413
2002	1	12 218 950	5 071 278	1 110 323	1 306 224	47 843	3 563 344	8 734 180	5 586 302	2 027 941
	2	13 188 650	4 939 437	1 583 111	1 345 032	62 746	4 917 642	9 144 805	6 650 528	2 153 596
	3	13 819 848	5 225 787	1 479 284	1 271 956	66 986	5 478 065	9 521 810	6 904 133	2 319 907
	4	15 591 297	4 985 974	2 150 209	1 877 474	62 580	4 966 358	10 839 812	6 844 082	2 447 030
2003	1	14 484 623	5 172 802	1 276 165	1 509 134	63 131	4 053 280	11 111 934	6 291 560	2 410 262
	2	12 878 083	4 873 781	1 747 718	1 756 532	81 373	5 363 771	7 793 554	6 567 709	2 170 936
	3	16 978 384	5 406 278	1 492 967	2 387 380	88 075	5 865 683	12 346 809	8 025 467	2 583 340
	4	19 225 248	5 217 616	2 313 184	3 328 890	85 923	5 417 370	13 739 051	8 279 965	2 596 821
2004	1	18 121 645	5 468 134	1 360 559	2 320 626	118 466	4 267 873	14 887 090	7 847 488	2 453 616
	2	19 568 068	5 571 561	1 882 151	2 590 232	152 428	5 848 739	15 301 982	8 984 298	2 794 727
	3	21 812 430	6 005 973	1 511 120	3 343 226	171 147	6 725 244	17 206 733	10 277 378	2 873 635
	4	23 464 219	5 731 533	2 446 561	5 168 020	157 373	5 719 227	17 316 573	9 983 736	3 091 332
2005	1	20 179 118	6 003 990	1 533 893	3 664 818	118 996	3 498 833	16 444 506	8 201 079	2 884 838
	2	21 956 951	6 191 012	2 241 971	5 001 947	139 916	3 886 763	16 819 660	9 155 562	3 168 756
	3	23 519 809	6 582 204	1 717 024	6 738 169	190 239	5 976 347	17 698 170	11 968 229	3 414 115
	4	27 295 031	6 370 636	2 909 490	9 363 013	197 983	6 461 400	18 067 298	12 547 221	3 527 568
2006	1 <sup>f</sup>	25 224 939	6 643 716	1 597 147	6 976 993	225 159	4 776 231	19 554 308	11 188 833	3 359 783
	2 <sup>f</sup>	27 384 924	6 995 111	2 330 169	9 006 092	273 355	5 571 827	19 498 504	12 604 203	3 685 931
	3 <sup>f</sup>	27 532 466	7 301 260	1 804 673	9 794 511	269 061	5 497 460	20 541 347	13 616 555	4 059 292
	4 <sup>f</sup>	35 110 287	7 218 865	3 259 386	13 552 397	250 768	4 615 750	24 741 218	14 190 253	4 337 843
2007	1 <sup>f</sup>	33 211 374	7 649 955	1 687 603	10 992 373	196 359	4 313 926	26 439 163	13 282 178	4 785 827
	2 <sup>f</sup>	37 693 069	8 113 555	2 617 811	14 313 454	233 939	5 236 893	27 021 464	14 491 257	5 352 789
	3 <sup>f</sup>	38 432 723	8 758 718	2 609 071	15 287 321	249 782	5 430 233	28 584 064	16 539 106	5 947 360
	4 <sup>f</sup>	42 687 739	8 455 121	4 044 743	13 593 740	253 059	5 449 518	33 830 746	16 624 517	6 314 671
2008	1 <sup>f</sup>	44 232 962	9 083 545	2 095 245	10 963 610	213 320	4 004 875	39 329 673	14 751 893	6 705 412
	2 <sup>f</sup>	46 379 909	9 519 901	3 145 118	13 374 996	228 091	4 527 395	37 823 520	14 912 197	7 326 916
	3 <sup>g</sup>	43 574 275	10 145 565	2 918 801	12 934 924	228 313	4 365 461	34 994 831	15 091 927	6 921 693

a 本地生產總值 / PIB / GDP = 3+4+5+6+7+8-9-10

3. 1999年至2008年以當年價格估算之本地生產總值及其主要支出項目的名義變動率

Taxas de variação homóloga do Produto Interno Bruto e principais componentes da despesa a preços correntes, 1999-2008

Year-on-year growth rates of Gross Domestic Product and main components of expenditure at current prices, 1999-2008

		%								
年份	季	本地生產總值	私人消費支出	政府最終消費支出	固定資本形成總額	庫存變化	貨物出口	服務出口	貨物進口	服務進口
Ano	Trimestre	Produto Interno Bruto	Despesa de consumo privado	Despesa de consumo final do governo	Formação bruta de capital fixo	Variação de existências	Exportações de bens	Exportações de serviços	Importações de bens	Importações de serviços
Year	Quarter	Gross Domestic Product	Private consumption expenditure	Government final consumption expenditure	Gross fixed capital formation	Changes in inventories	Exports of goods	Exports of services	Imports of goods	Imports of services
1		2	3	4	5	6	7	8	9	10
1999		- 4.2	- 0.6	11.9	- 6.3	.. <sup>r</sup>	2.9	- 4.6	4.8	10.6
2000		3.6	- 2.0	- 12.6	- 32.1	- 11.5	15.9	22.3	6.2	16.1
2001		1.5	0.5	1.0	- 8.9	- 74.5	- 9.4	13.1	0.6	7.8
2002		10.3	2.1	3.5	13.3	1 180.0	2.4	17.4	5.8	14.3
2003		16.0	2.2	8.0	54.8	32.6	9.4	17.7	12.2	9.1
2004		30.5	10.2	5.4	49.4	88.2	9.0	43.8	27.2	14.9
2005		12.0	10.4	16.7	84.5	8.0	- 12.1	6.7	12.9	15.9
2006 <sup>r</sup>		24.0	12.0	7.0	58.8	57.4	3.2	22.2	23.2	18.8
2007 <sup>r</sup>		31.9	17.1	21.9	37.8	- 8.4	- 0.2	37.4	18.1	45.1
2001	1	0.2	1.3	2.3	- 2.9	- 72.9	- 9.5	15.4	8.7	14.3
	2	1.5	2.2	- 0.5	- 18.8	- 73.9	- 7.1	15.3	1.9	7.9
	3	- 0.5	- 1.1	1.2	- 8.3	- 75.2	- 11.5	7.4	- 4.8	6.5
	4	4.5	- 0.5	1.5	- 5.5	- 75.7	- 9.1	15.1	- 1.5	3.9
2002	1	8.2	1.1	5.0	4.6	1 112.7	- 2.1	11.5	- 1.6	11.1
	2	11.2	1.7	- 2.8	16.0	1 134.7	0.8	21.6	6.3	11.2
	3	6.7	2.6	7.0	14.2	1 213.3	3.2	11.6	7.1	14.2
	4	14.7	3.2	5.5	17.6	1 250.3	6.8	24.8	10.8	20.3
2003	1	18.5	2.0	14.9	15.5	32.0	13.7	27.2	12.6	18.9
	2	- 2.4	- 1.3	10.4	30.6	29.7	9.1	- 14.8	- 1.2	0.8
	3	22.9	3.5	0.9	87.7	31.5	7.1	29.7	16.2	11.4
	4	23.3	4.6	7.6	77.3	37.3	9.1	26.7	21.0	6.1
2004	1	25.1	5.7	6.6	53.8	87.7	5.3	34.0	24.7	1.8
	2	51.9	14.3	7.7	47.5	87.3	9.0	96.3	36.8	28.7
	3	28.5	11.1	1.2	40.0	94.3	14.7	39.4	28.1	11.2
	4	22.0	9.8	5.8	55.2	83.2	5.6	26.0	20.6	19.0
2005	1	11.4	9.8	12.7	57.9	0.4	- 18.0	10.5	4.5	17.6
	2	12.2	11.1	19.1	93.1	- 8.2	- 33.5	9.9	1.9	13.4
	3	7.8	9.6	13.6	101.5	11.2	- 11.1	2.9	16.5	18.8
	4	16.3	11.2	18.9	81.2	25.8	13.0	4.3	25.7	14.1
2006	1 <sup>r</sup>	25.0	10.7	4.1	90.4	89.2	36.5	18.9	36.4	16.5
	2 <sup>r</sup>	24.7	13.0	3.9	80.1	95.4	43.4	15.9	37.7	16.3
	3 <sup>r</sup>	17.1	10.9	5.1	45.4	41.4	- 8.0	16.1	13.8	18.9
	4 <sup>r</sup>	28.6	13.3	12.0	44.7	26.7	- 28.6	36.9	13.1	23.0
2007	1 <sup>r</sup>	31.7	15.1	5.7	57.6	- 12.8	- 9.7	35.2	18.7	42.4
	2 <sup>r</sup>	37.6	16.0	12.3	58.9	- 14.4	- 6.0	38.6	15.0	45.2
	3 <sup>r</sup>	39.6	20.0	44.6	56.1	- 7.2	- 1.2	39.2	21.5	46.5
	4 <sup>r</sup>	21.6	17.1	24.1	0.3	0.9	18.1	36.7	17.2	45.6
2008	1 <sup>r</sup>	33.2	18.7	24.2	- 0.3	8.6	- 7.2	48.8	11.1	40.1
	2 <sup>r</sup>	23.0	17.3	20.1	- 6.6	- 2.5	- 13.5	40.0	2.9	36.9
	3 <sup>@</sup>	13.4	15.8	11.9	- 15.4	- 8.6	- 19.6	22.4	- 8.8	16.4

4. 1998年至2008年以不變(2002年)價格估算之本地生產總值及其主要支出項目  
 Produto Interno Bruto e principais componentes da despesa a preços constantes (2002), 1998-2008  
 Gross Domestic Product and main components of expenditure at constant (2002) prices, 1998-2008

年份 季		本地生產總值	私人消費支出	政府最終消費支出	固定資本形成總額	庫存變化	貨物出口	服務出口	貨物進口	服務進口
Ano	Trimestre	Produto Interno Bruto	Despesa de consumo privado	Despesa de consumo final do governo	Formação bruta de capital fixo	Variação de existências	Exportações de bens	Exportações de serviços	Importações de bens	Importações de serviços
Year	Quarter	Gross Domestic Product	Private consumption expenditure	Government final consumption expenditure	Gross fixed capital formation	Changes in inventories	Exports of goods	Exports of services	Imports of goods	Imports of services
1	2	3	4	5	6	7	8	9	10	
1998		46 862 141	18 718 917	6 266 314	7 742 829	- 69 102	16 108 482	24 275 451	20 974 852	5 205 898
1999		45 756 819	19 181 713	7 082 229	7 883 604	81 426	16 689 573	23 413 389	22 559 444	6 015 670
2000		48 386 399	18 996 874	6 159 955	5 505 331	68 298	19 034 799	28 718 795	22 973 910	7 123 743
2001		49 783 977	19 351 375	6 166 151	5 301 510	17 933	17 936 446	32 512 311	23 763 600	7 738 147
2002		54 818 745	20 222 476	6 322 928	5 800 686	240 156	18 925 409	38 240 607	25 985 045	8 948 473
2003		62 583 576	20 949 873	6 755 793	8 449 795	324 007	20 696 608	44 780 990	29 445 278	9 928 212
2004		80 349 189	22 786 057	7 044 005	11 587 039	589 229	22 422 708	63 744 262	36 518 705	11 305 407
2005		85 886 488	24 432 241	7 818 414	18 502 940	593 192	19 837 414	67 545 123	39 826 776	13 016 059
2006 <sup>r</sup>		100 499 650	26 434 560	8 115 990	26 729 485	874 248	20 402 769	80 817 637	47 515 065	15 359 974
2007 <sup>r</sup>		126 201 083	29 455 046	9 165 189	33 357 560	768 300	20 498 565	109 151 854	54 293 519	21 901 910
2001	1	11 282 722	4 871 443	1 084 137	1 294 687	3 661	3 377 555	7 811 048	5 358 132	1 801 676
	2	11 966 772	4 726 865	1 647 076	1 179 042	4 790	4 790 363	7 507 955	5 977 161	1 912 159
	3	13 030 035	4 982 766	1 390 350	1 181 552	4 915	5 235 638	8 513 314	6 274 373	2 004 128
	4	13 504 448	4 770 300	2 044 588	1 646 229	4 566	4 532 890	8 679 994	6 153 934	2 020 184
2002	1	12 147 810	5 033 828	1 115 655	1 321 385	47 520	3 405 422	8 719 508	5 480 716	2 014 792
	2	13 146 656	4 943 735	1 584 953	1 358 315	63 647	4 989 931	9 143 130	6 786 103	2 150 952
	3	13 962 679	5 235 407	1 475 577	1 267 192	67 258	5 644 203	9 535 028	6 947 136	2 314 850
	4	15 561 600	5 009 505	2 146 744	1 853 794	61 732	4 885 853	10 842 942	6 771 090	2 467 880
2003	1	14 119 042	5 218 974	1 267 258	1 417 663	63 849	3 817 954	11 057 915	6 297 920	2 426 651
	2	12 740 603	4 933 563	1 730 899	1 673 097	83 300	5 480 248	7 810 952	6 754 243	2 217 212
	3	17 001 791	5 501 595	1 475 208	2 279 602	88 933	6 032 358	12 311 839	8 051 642	2 636 101
	4	18 722 140	5 295 742	2 282 428	3 079 433	87 925	5 366 048	13 600 284	8 341 472	2 648 247
2004	1	17 818 686	5 526 421	1 330 077	2 054 882	117 605	4 327 752	14 706 147	7 757 405	2 486 795
	2	19 122 382	5 603 814	1 843 705	2 304 306	150 025	5 837 634	15 102 045	8 903 213	2 815 933
	3	21 156 322	5 984 067	1 474 631	2 914 629	168 924	6 655 740	16 958 060	10 119 115	2 880 614
	4	22 251 799	5 671 754	2 395 592	4 313 223	152 676	5 601 582	16 978 010	9 738 972	3 122 066
2005	1	19 108 654	5 905 297	1 419 417	2 886 319	114 205	3 514 029	16 103 498	7 924 946	2 909 166
	2	20 574 615	6 072 436	2 096 095	3 830 854	129 996	3 876 253	16 538 346	8 785 289	3 184 075
	3	21 699 284	6 344 687	1 587 446	5 008 130	174 052	5 995 104	17 352 247	11 368 902	3 393 480
	4	24 503 935	6 109 820	2 715 456	6 777 637	174 939	6 452 029	17 551 031	11 747 639	3 529 338
2006	1 <sup>r</sup>	22 854 914	6 329 953	1 457 437	4 978 698	198 652	4 815 328	18 867 223	10 432 181	3 360 198
	2 <sup>r</sup>	24 168 544	6 587 088	2 105 931	6 231 841	234 653	5 575 782	18 706 488	11 591 635	3 681 605
	3 <sup>r</sup>	23 983 126	6 794 027	1 625 317	6 627 069	222 025	5 426 631	19 688 280	12 389 953	4 010 269
	4 <sup>r</sup>	29 493 067	6 723 491	2 927 305	8 891 877	218 918	4 585 027	23 555 646	13 101 296	4 307 902
2007	1 <sup>r</sup>	28 222 468	7 036 145	1 441 453	7 115 423	171 365	4 399 145	25 012 158	12 218 805	4 734 414
	2 <sup>r</sup>	31 276 048	7 358 520	2 237 874	8 988 651	194 385	5 255 217	25 575 159	13 063 700	5 270 057
	3 <sup>r</sup>	31 280 289	7 702 569	2 162 011	9 286 579	199 247	5 358 128	26 918 162	14 575 698	5 770 708
	4 <sup>r</sup>	35 422 278	7 357 812	3 323 851	7 966 906	203 304	5 486 076	31 646 376	14 435 316	6 126 731
2008	1 <sup>r</sup>	37 337 053	7 644 968	1 595 139	6 086 300	162 836	3 906 668	36 631 975	12 232 975	6 457 857
	2 <sup>r</sup>	38 222 688	7 789 915	2 376 410	7 271 081	162 624	4 425 454	35 294 252	12 089 559	7 007 489
	3 <sup>o</sup>	34 816 219	8 098 912	2 197 114	6 945 966	163 561	3 939 477	32 279 697	12 291 750	6 516 758

千澳門元  
 '000 MOP

5. 1999年至2008年以不變(2002年)價格估算之本地生產總值及其主要支出項目的實質增長率

Taxas de variação homóloga do Produto Interno Bruto e principais componentes da despesa a preços constantes (2002), 1999-2008

Year-on-year growth rates of Gross Domestic Product and main components of expenditure at constant (2002) prices, 1999-2008

年份	季	本地生產總值	私人消費支出	政府最終消費支出	固定資本形成總額	庫存變化	貨物出口	服務出口	貨物進口	服務進口
Ano	Trimestre	Produto Interno Bruto	Despesa de consumo privado	Despesa de consumo final do governo	Formação bruta de capital fixo	Variação de existências	Exportações de bens	Exportações de serviços	Importações de bens	Importações de serviços
Year	Quarter	Gross Domestic Product	Private consumption expenditure	Government final consumption expenditure	Gross fixed capital formation	Changes in inventories	Exports of goods	Exports of services	Imports of goods	Imports of services
1		2	3	4	5	6	7	8	9	10
1999		- 2.4	2.5	13.0	1.8	.. <sup>r</sup>	3.6	- 3.6	7.6	15.6
2000		5.7	- 1.0	- 13.0	- 30.2	- 16.1	14.1	22.7	1.8	18.4
2001		2.9	1.9	0.1	- 3.7	- 73.7	- 5.8	13.2	3.4	8.6
2002		10.1	4.5	2.5	9.4	1 239.2	5.5	17.6	9.3	15.6
2003		14.2	3.6	6.8	45.7	34.9	9.4	17.1	13.3	10.9
2004		28.4	8.8	4.3	37.1	81.9	8.3	42.3	24.0	13.9
2005		6.9	7.2	11.0	59.7	0.7	- 11.5	6.0	9.1	15.1
2006 <sup>r</sup>		17.0	8.2	3.8	44.5	47.4	2.8	19.6	19.3	18.0
2007 <sup>r</sup>		25.6	11.4	12.9	24.8	- 12.1	0.5	35.1	14.3	42.6
2001	1	5.0	2.5	0.9	6.7	- 73.7	- 4.5	15.4	6.1	14.8
	2	4.4	3.2	- 1.7	- 15.7	- 73.6	- 1.9	15.2	2.3	8.6
	3	- 0.5	0.1	0 <sup>q</sup>	- 1.9	- 74.4	- 10.5	7.5	- 2.0	7.7
	4	3.2	1.7	1.2	- 2.5	- 73.2	- 4.8	15.5	8.4	4.6
2002	1	7.7	3.3	2.9	2.1	1 198.0	0.8	11.6	2.3	11.8
	2	9.9	4.6	- 3.8	15.2	1 228.6	4.2	21.8	13.5	12.5
	3	7.2	5.1	6.1	7.2	1 268.4	7.8	12.0	10.7	15.5
	4	15.2	5.0	5.0	12.6	1 251.9	7.8	24.9	10.0	22.2
2003	1	16.2	3.7	13.6	7.3	34.4	12.1	26.8	14.9	20.4
	2	- 3.1	- 0.2	9.2	23.2	30.9	9.8	- 14.6	- 0.5	3.1
	3	21.8	5.1	0 <sup>q</sup>	79.9	32.2	6.9	29.1	15.9	13.9
	4	20.3	5.7	6.3	66.1	42.4	9.8	25.4	23.2	7.3
2004	1	26.2	5.9	5.0	44.9	84.2	13.4	33.0	23.2	2.5
	2	50.1	13.6	6.5	37.7	80.1	6.5	93.3	31.8	27.0
	3	24.4	8.8	0 <sup>q</sup>	27.9	89.9	10.3	37.7	25.7	9.3
	4	18.9	7.1	5.0	40.1	73.6	4.4	24.8	16.8	17.9
2005	1	7.2	6.9	6.7	40.5	- 2.9	- 18.8	9.5	2.2	17.0
	2	7.6	8.4	13.7	66.2	- 13.4	- 33.6	9.5	- 1.3	13.1
	3	2.6	6.0	7.7	71.8	3.0	- 9.9	2.3	12.4	17.8
	4	10.1	7.7	13.4	57.1	14.6	15.2	3.4	20.6	13.0
2006	1 <sup>r</sup>	19.6	7.2	2.7	72.5	73.9	37.0	17.2	31.6	15.5
	2 <sup>r</sup>	17.5	8.5	0.5	62.7	80.5	43.8	13.1	31.9	15.6
	3 <sup>r</sup>	10.5	7.1	2.4	32.3	27.6	- 9.5	13.5	9.0	18.2
	4 <sup>r</sup>	20.4	10.0	7.8	31.2	25.1	- 28.9	34.2	11.5	22.1
2007	1 <sup>r</sup>	23.5	11.2	- 1.1	42.9	- 13.7	- 8.6	32.6	17.1	40.9
	2 <sup>r</sup>	29.4	11.7	6.3	44.2	- 17.2	- 5.7	36.7	12.7	43.1
	3 <sup>r</sup>	30.4	13.4	33.0	40.1	- 10.3	- 1.3	36.7	17.6	43.9
	4 <sup>r</sup>	20.1	9.4	13.5	- 10.4	- 7.1	19.7	34.3	10.2	42.2
2008	1 <sup>r</sup>	32.3	8.7	10.7	- 14.5	- 5.0	- 11.2	46.5	0.1	36.4
	2 <sup>r</sup>	22.2	5.9	6.2	- 19.1	- 16.3	- 15.8	38.0	- 7.5	33.0
	3 <sup>q</sup>	11.3	5.1	1.6	- 25.2	- 17.9	- 26.5	19.9	- 15.7	12.9

以下統計表可在本局網頁下載

**Os quadros abaixo indicados podem ser consultados na homepage da DSEC**  
**The following statistical tables can be downloaded from our website**

6. 1998 年至 2008 年本地生產總值及其主要支出項目之名義結構  
Estrutura nominal do Produto Interno Bruto e das principais componentes da despesa, 1998 - 2008  
Nominal structure of Gross Domestic Product and main components of expenditure, 1998 - 2008
7. 1998 年至 2008 年本地生產總值及其主要支出項目之實質結構(2002 年=100)  
Estrutura real (ano: 2002=100) do Produto Interno Bruto e das principais componentes da despesa, 1998 - 2008  
Real structure (year: 2002=100) of Gross Domestic Product and main components of expenditure, 1998 -2008
8. 1998 年至 2008 年以當年價格估算之私人消費支出  
Despesa de consumo privado a preços correntes, 1998 - 2008  
Private consumption expenditure at current prices, 1998 - 2008
9. 1999 年至 2008 年以當年價格估算之私人消費支出的名義變動率  
Taxas de variação homóloga de despesa de consumo privado a preços correntes, 1999 -2008  
Year-on-year growth rates of private consumption expenditure at current prices, 1999 -2008
10. 1998 年至 2008 年以不變(2002 年)價格估算之私人消費支出  
Despesa de consumo privado a preços constantes (2002), 1998 - 2008  
Private consumption expenditure at constant (2002) prices, 1998 - 2008
11. 1999 年至 2008 年以不變(2002 年)價格估算之私人消費支出的實質變動率  
Taxas de variação homóloga de despesa de consumo privado a preços constantes (2002), 1999 - 2008  
Year-on-year growth rates of private consumption expenditure at constant (2002) prices, 1999 - 2008
12. 1998 年至 2008 年以當年價格估算之政府最終消費支出  
Despesa de consumo final do governo a preço correntes, 1998 - 2008  
Government final consumption expenditure at current prices, 1998 - 2008

- 
13. 1999 年至 2008 年以當年價格估算之政府最終消費支出的名義變動率  
Taxas de variação homóloga de despesa de consumo final do governo a preço correntes, 1999 - 2008  
Year-on-year growth rates of government final consumption expenditure at current prices, 1999 - 2008
  14. 1998 年至 2008 年以不變(2002 年)價格估算之政府最終消費支出  
Despesa de consumo final do governo a preço constantes (2002), 1998 - 2008  
Government final consumption expenditure at constant (2002) prices, 1998 - 2008
  15. 1999 年至 2008 年以不變(2002 年)價格估算之政府最終消費支出的實質變動率  
Taxas de variação homóloga de despesa de consumo final do governo a preço constantes (2002), 1999 - 2008  
Year-on-year growth rates of government final consumption expenditure at constant (2002) prices, 1999-2008
  16. 1998 年至 2008 年以當年價格估算之固定資本形成總額  
Formação bruta de capita fixo a preços correntes, 1998 - 2008  
Gross fixed capital formation at current prices, 1998 - 2008
  17. 1999 年至 2008 年以當年價格估算之固定資本形成總額的名義變動率  
Taxas de variação homóloga de formação bruta de capita fixo a preços correntes, 1999 - 2008  
Year-on-year growth rates of gross fixed capital formation at current prices, 1999 - 2008
  18. 1998 年至 2008 年以不變(2002 年)價格估算之固定資本形成總額  
Formação bruta de capita fixo a preços constantes (2002), 1998 - 2008  
Gross fixed capital formation at constant (2002) prices, 1998 - 2008
  19. 1999 年至 2008 年以不變(2002 年)價格估算之固定資本形成總額的實質變動率  
Taxas de variação homóloga de formação bruta de capita fixo a preços constantes (2002), 1999 - 2008  
Year-on-year growth rates of gross fixed capital formation at constant (2002) prices, 1999 - 2008
  20. 1998 年至 2008 年以當年價格估算之出口  
Exportações a preços correntes, 1998 - 2008  
Exports at current prices, 1998 - 2008
  21. 1999 年至 2008 年以當年價格估算之出口的名義變動率  
Taxas de variação homóloga de exportações a preços correntes, 1999 - 2008  
Year-on-year growth rates of exports at current prices, 1999 - 2008

- 
22. 1998 年至 2008 年以不變(2002 年)價格估算之出口  
Exportações a preços constantes (2002), 1998 - 2008  
Exports at constant (2002) prices, 1998 - 2008
23. 1999 年至 2008 年以不變(2002 年)價格估算之出口的實質變動率  
Taxas de variação homóloga de exportações a preços constantes (2002), 1999 - 2008  
Year-on-year growth rates of exports at constant (2002) prices, 1999 - 2008
24. 1998 年至 2008 年以當年價格估算之進口  
Importações a preços correntes, 1998 - 2008  
Imports at current prices, 1998 - 2008
25. 1999 年至 2008 年以當年價格估算之進口的名義增長率  
Taxas de variação homóloga de importações a preços correntes, 1999 - 2008  
Year-on-year growth rates of imports at current prices, 1999 - 2008
26. 1998 年至 2008 年以不變(2002 年)價格估算之進口  
Importações a preços constantes (2002), 1998 - 2008  
Imports at constant (2002) prices, 1998 - 2008
27. 1999 年至 2008 年以不變(2002 年)價格估算之進口的實質增長率  
Taxas de variação homóloga de importações a preços constantes (2002), 1999 - 2008  
Year-on-year growth rates of imports at constant (2002) prices, 1999 - 2008

統計服務全為您

A Estatística ao Serviço da Comunidade  
Statistics Are Here To Serve You