

CONSUMER PRICE INDEX

JULY/ 2010

No.7

Composite CPI (104.61) for July 2010 increased by 2.96% year-on-year, attributable to the price increase of Food & Non-Alcoholic Beverages. Analyzed by section of goods and services, Clothing & Footwear (+6.98%); Transport (+6.16%); Recreation & Culture (+6.15%); Miscellaneous Goods & Services (+6.04%); Health (+5.26%); and Food & Non-Alcoholic Beverages (+4.58%) recorded notable increases on account of dearer prices of men's and women's clothing, gasoline, airfare, gold jewellery, fresh fish and seafood, and vegetables, as well as higher charges for outbound package tours, medical services and meals bought away from home.

As for other sections, apart from the 9.81% decrease of the price index of Education, reduced charges for mobile phone services caused the price index of Communication to decrease by 3.52%.

The CPI-A (104.06) and CPI-B (104.77) for July 2010 increased by 2.35% and 3.17% year-on-year respectively.

1 - CONSUMER PRICE INDEX

	Unit	Composite CPI	CPI-A	CPI-B
Index value for July 2010		104.61	104.06	104.77
Year-on-year change	%	2.96	2.35	3.17
Annualized change	%	1.20	0.46	1.36
Month-to-month change	%	0.21	0.21	0.16
Year-on-year change for the first seven months of 2010	%	2.22	1.57	2.39

The Composite CPI for July 2010 increased by 0.21% month-to-month, with the price index of Recreation & Culture rising by 2.61%, attributable to higher charges for outbound package tours; and recreational and cultural services during Summer Holidays. However, price index of Clothing & Footwear fell by 2.08% on account of lower prices of men's and women's clothing.

The average Composite CPI for the first seven months of 2010 increased by 2.22% year-on-year. For the 12 months ended July 2010, the average Composite CPI rose by 1.2% from the preceding period.

The 2008/2009-based Composite CPI reflects the impact of price changes on the general population. The CPI-A relates to about 50% of the households, which have an average monthly expenditure of MOP6,000 to MOP18,999. The CPI-B relates to about 30% of the households, which have an average monthly expenditure of MOP19,000 to MOP34,999.

2 - CHANGES OF THE COMPOSITE CPI, CPI-A AND CPI-B BY SECTION

Goods and services	Year-on-year change			Month-to-month change			Annualized change			Contribution to the month-to-month change of the Global Index		
	Com- posite CPI	CPI-A	CPI-B	Com- posite CPI	CPI-A	CPI-B	Com- posite CPI	CPI-A	CPI-B	Com- posite CPI	CPI-A	CPI-B
Global Index	2.96	2.35	3.17	0.21	0.21	0.16	1.20	0.46	1.36	100.00	100.00	100.00
Food & Non-Alcoholic Beverages	4.58	4.63	4.57	0.26	0.26	0.22	4.02	4.12	3.99	41.52	49.46	44.95
Alcoholic Beverages & Tobacco	0.60	0.51	0.59	-0.10	-0.11	-0.09	10.31	11.20	10.58	-0.57	-0.85	-0.65
Clothing & Footwear	6.98	7.47	7.32	-2.08	-1.81	-2.27	6.93	7.08	6.95	-73.67	-46.74	-117.58
Housing & Fuels	1.38	1.29	1.20	-0.03	-0.02	-0.03	-1.29	-1.85	-1.51	-2.63	-2.94	-3.31
Household Goods & Furnishings	1.38	1.38	1.12	0.08	0.10	0.07	1.10	1.15	0.96	1.20	1.08	1.62
Health	5.26	5.47	5.68	1.54	1.94	1.44	3.15	3.22	3.40	21.73	26.17	26.40
Transport	6.16	5.28	6.62	0.49	0.35	0.32	4.02	2.73	4.07	18.18	9.50	15.56
Communication	-3.52	-3.36	-3.62	-0.03	-0.02	-0.03	-2.82	-2.64	-2.93	-0.39	-0.42	-0.46
Recreation & Culture	6.15	5.99	6.16	2.61	2.17	2.61	3.19	3.61	2.94	73.76	49.63	103.91
Education	-9.81	-10.41	-8.97	-	-	-	-13.64	-14.39	-12.61	-	-	-
Miscellaneous Goods & Services	6.04	4.68	6.07	0.51	0.50	0.53	5.01	4.37	4.96	20.87	15.11	29.56

- Absolute value equals zero

3 - TIME SERIES OF THE COMPOSITE CPI

4/2008 - 3/2009 = 100

Year/ Month	Global Index	Food & Non- Alcoholic Beverages	Alcoholic Beverages & Tobacco	Clothing & Footwear	Housing & Fuels	Household Goods & Furnishings	Health	Transport	Communi- cation	Recreation & Culture	Education	Miscel- laneous Goods & Services
Weight	100.00	32.78	1.12	6.75	22.82	3.13	2.90	7.88	3.52	5.93	5.16	8.02
2008	100.23	97.19	99.34	95.04	99.05	99.26	98.68	102.82	97.32	97.41	119.84	99.78
2009	101.40	102.57	109.08	104.07	97.80	101.44	102.08	96.87	95.64	100.55	107.21	104.22
2009												
7	101.60	103.18	113.54	104.47	96.92	101.54	102.04	97.36	95.64	100.02	109.78	104.28
8	101.79	102.80	113.63	102.10	97.57	101.46	102.21	100.08	95.64	101.49	109.78	104.18
9	100.80	103.19	113.73	99.75	97.36	101.58	102.40	98.52	95.64	100.70	98.95	104.73
10	101.07	103.31	113.75	102.00	97.29	101.63	102.87	99.27	95.63	100.38	99.00	105.30
11	101.56	103.27	113.87	107.66	97.45	101.69	103.07	99.34	95.63	100.42	99.00	106.09
12	102.17	103.54	113.87	112.90	97.26	101.72	103.32	99.27	95.63	102.84	99.00	106.91
2010												
1	102.14	104.19	113.90	109.69	97.19	101.90	104.04	100.52	92.51	101.74	99.00	107.36
2	103.27	105.92	114.14	106.72	97.53	101.94	103.91	101.53	92.45	108.13	99.01	110.24
3	103.01	106.59	114.18	105.66	97.66	102.16	104.30	101.92	92.42	102.14	99.01	108.59
4	103.68	107.26	114.23	110.16	97.78	102.48	104.64	102.76	92.39	102.49	99.01	108.76
5	104.06	107.48	114.27	113.64	98.02	102.78	105.44	101.19	92.26	103.47	99.01	109.44
6	104.39	107.63	114.33	114.13	98.28	102.85	105.79	102.85	92.30	103.47	99.01	110.01
7	104.61	107.91	114.22	111.76	98.26	102.93	107.41	103.35	92.28	106.17	99.01	110.58

4 - TIME SERIES OF THE CPI-A

4/2008 - 3/2009 = 100

Year/ Month	Global Index	Food & Non- Alcoholic Beverages	Alcoholic Beverages & Tobacco	Clothing & Footwear	Housing & Fuels	Household Goods & Furnishings	Health	Transport	Communi- cation	Recreation & Culture	Education	Miscel- laneous Goods & Services
Weight	100.00	36.94	1.44	4.82	27.22	2.19	2.71	5.78	4.22	4.71	4.00	5.96
2008	100.65	97.11	98.76	95.41	100.11	98.41	99.09	102.92	97.02	97.04	119.91	98.54
2009	101.45	102.60	109.23	104.17	98.11	101.93	102.76	95.65	95.64	100.53	107.13	103.17
2009												
7	101.67	103.26	114.14	104.22	97.13	102.09	102.58	96.00	95.64	99.97	109.85	103.26
8	101.81	102.85	114.24	102.22	97.79	101.88	102.86	98.62	95.64	100.80	109.86	103.20
9	100.70	103.28	114.24	99.99	97.35	101.95	103.07	97.23	95.64	100.99	98.35	104.08
10	100.89	103.39	114.24	102.49	97.28	102.00	103.65	97.51	95.63	100.86	98.40	104.31
11	101.22	103.31	114.37	108.17	97.49	102.06	103.83	97.63	95.63	100.88	98.40	104.64
12	101.64	103.58	114.37	113.40	97.31	102.08	104.15	97.50	95.63	102.79	98.40	105.06
2010												
1	101.66	104.30	114.41	110.03	97.27	102.30	104.75	98.64	92.62	101.87	98.40	105.29
2	103.00	106.27	114.69	107.08	97.68	102.36	104.67	99.46	92.57	108.80	98.41	109.59
3	102.80	106.86	114.73	105.87	97.81	102.56	104.92	100.12	92.55	102.92	98.41	106.83
4	103.36	107.51	114.77	110.12	97.93	102.94	105.22	101.02	92.53	103.20	98.41	106.95
5	103.61	107.64	114.80	113.64	98.15	103.29	105.84	99.21	92.42	103.89	98.41	107.30
6	103.85	107.75	114.85	114.07	98.40	103.39	106.14	100.72	92.45	103.70	98.41	107.55
7	104.06	108.04	114.72	112.00	98.38	103.50	108.20	101.07	92.43	105.95	98.41	108.09

5 - TIME SERIES OF THE CPI-B

4/2008 - 3/2009 = 100

Year/ Month	Global Index	Food & Non- Alcoholic Beverages	Alcoholic Beverages & Tobacco	Clothing & Footwear	Housing & Fuels	Household Goods & Furnishings	Health	Transport	Communi- cation	Recreation & Culture	Education	Miscel- laneous Goods & Services
Weight	100.00	32.59	1.06	7.63	20.76	3.60	2.91	8.04	3.32	6.45	5.03	8.60
2008	100.12	97.22	98.67	94.89	99.28	98.83	98.09	103.65	97.38	97.90	117.68	99.69
2009	101.37	102.58	108.60	103.87	97.82	101.24	101.68	96.17	95.50	100.88	106.04	104.17
2009												
7	101.55	103.17	113.18	104.15	96.96	101.33	101.71	96.61	95.51	100.30	108.34	104.23
8	101.69	102.75	113.29	101.89	97.54	101.23	101.79	99.63	95.51	101.81	108.34	104.11
9	100.77	103.14	113.36	99.65	97.31	101.35	102.01	98.05	95.51	100.96	98.56	104.69
10	101.06	103.27	113.37	101.85	97.23	101.38	102.48	98.68	95.50	100.63	98.62	105.24
11	101.60	103.29	113.48	107.38	97.36	101.43	102.70	98.77	95.50	100.65	98.62	105.99
12	102.26	103.56	113.49	112.42	97.16	101.47	102.93	98.67	95.49	103.09	98.62	106.82
2010												
1	102.20	104.17	113.51	109.32	97.08	101.61	103.78	100.02	92.29	101.89	98.62	107.30
2	103.28	105.78	113.72	106.40	97.38	101.61	103.59	100.96	92.23	108.05	98.62	110.13
3	103.05	106.54	113.75	105.48	97.51	101.78	104.12	101.63	92.20	102.24	98.62	108.58
4	103.81	107.22	113.82	110.24	97.64	102.05	104.53	102.71	92.17	102.65	98.62	108.74
5	104.24	107.49	113.89	113.91	97.89	102.31	105.53	100.92	92.04	103.71	98.62	109.41
6	104.60	107.65	113.95	114.37	98.15	102.39	105.95	102.67	92.08	103.78	98.62	109.99
7	104.77	107.88	113.85	111.78	98.12	102.47	107.48	103.00	92.06	106.49	98.62	110.56

6 – AVERAGE RETAIL PRICES OF SELECTED FOOD ITEMS

Item	Unit	Average retail price (MOP)					Rate of change (%)	
		2009	2010				Month-to-month	Year-on-year
		July	April	May	June	July		
Thai rice (packaged)		10.02	11.14	11.14	11.09	11.05	-0.39	10.28
Beef		73.86	72.60	72.61	71.99	70.72	-1.77	-4.26
Beef shin		71.82	69.57	71.07	70.03	68.04	-2.84	-5.25
Lean meat		52.89	51.95	52.07	51.55	51.48	-0.14	-2.68
Pork chop		53.27	51.83	51.59	52.07	51.83	-0.45	-2.70
Chicken		33.81	33.83	33.77	34.06	34.12	0.17	0.91
Golden thread		67.13	59.90	56.57	59.13	64.54	9.16	-3.86
Pomfret		113.72	148.56	142.38	123.97	133.20	7.45	17.13
Sole		134.88	174.95	150.60	160.44	135.71	-15.41	0.62
Grass carp	kg	36.11	35.82	35.43	35.22	35.16	-0.19	-2.64
Head of "Tai U"		50.93	51.10	51.16	50.80	49.82	-1.93	-2.17
Fresh-water perch		90.72	74.46	75.08	75.48	77.09	2.13	-15.02
Chinese cabbage		11.98	12.71	12.81	12.78	14.16	10.78	18.16
Choy sum		16.00	18.10	17.24	17.09	19.12	11.84	19.46
Chinese lettuce		11.55	9.17	9.87	11.98	12.91	7.75	11.77
Hairy gourd		10.09	12.45	11.11	10.34	10.62	2.66	5.20
Tomato		11.17	10.52	10.07	11.25	11.35	0.81	1.59
Carrot		9.86	9.90	9.89	10.02	10.18	1.56	3.26
Banana		7.74	7.70	7.70	7.70	7.70	-	-0.53
Orange		4.55	4.19	3.96	3.92	3.72	-5.14	-18.36
Apple	each	3.48	3.53	3.44	3.46	3.39	-2.15	-2.76
Hen egg		1.11	1.10	1.12	1.15	1.14	-0.62	2.57

- Absolute value equals zero

CHART 1 - MOVEMENTS OF THE COMPOSITE CPI

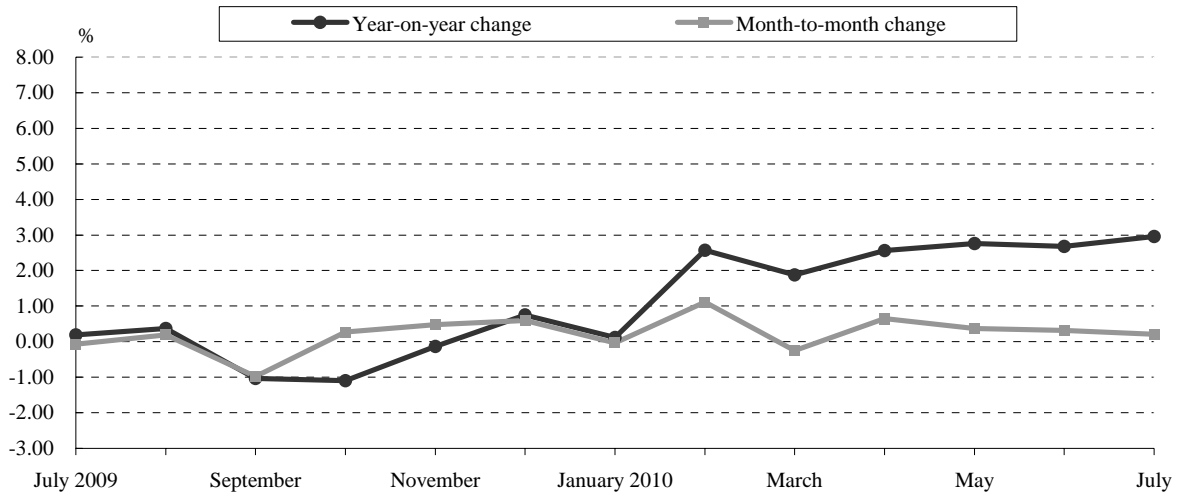


CHART 2 - MOVEMENTS OF THE CPI-A

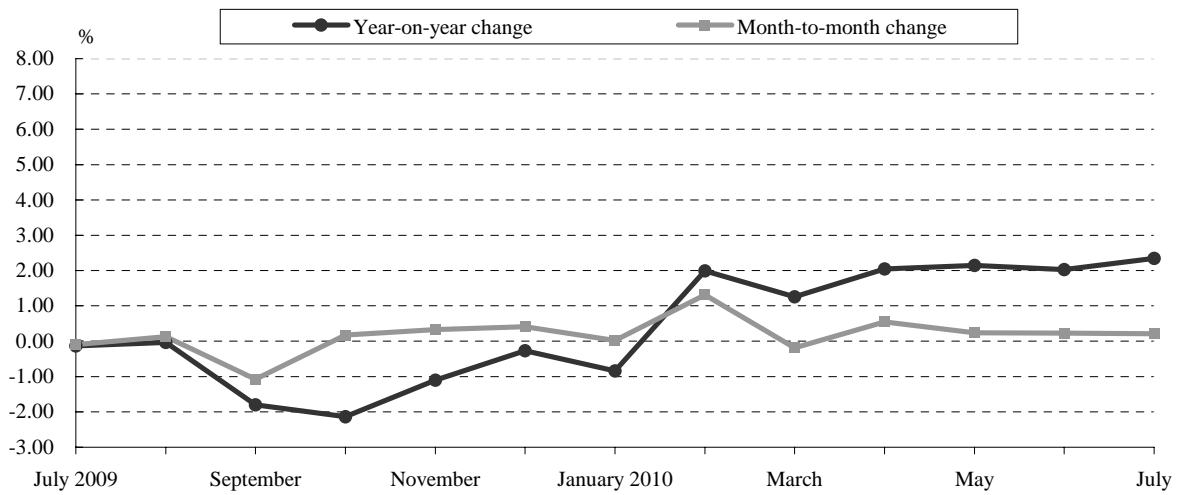
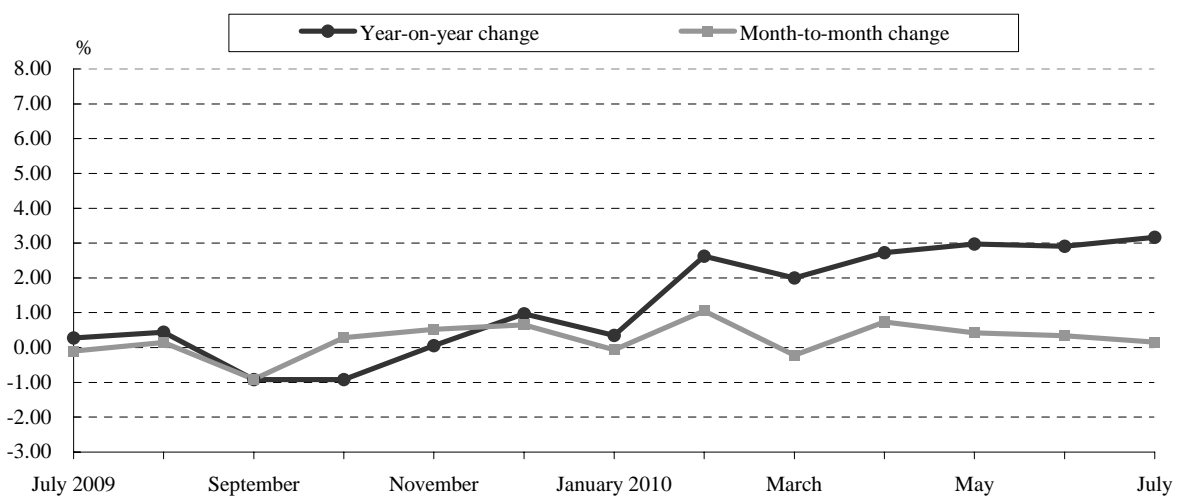


CHART 3 - MOVEMENTS OF THE CPI-B



The following statistical tables are available for download from our website

- 1G - Time Series of the Composite Consumer Price Index (Composite CPI) by Section
- 1A - Time Series of the Consumer Price Index A (CPI-A) by Section
- 1B - Time Series of the Consumer Price Index B (CPI-B) by Section
- 2G - Month-to-Month Change of the Composite CPI by Section
- 2A - Month-to-Month Change of the CPI-A by Section
- 2B - Month-to-Month Change of the CPI-B by Section
- 3G - Year-on-Year Change of the Composite CPI by Section
- 3A - Year-on-Year Change of the CPI-A by Section
- 3B - Year-on-Year Change of the CPI-B by Section
- 4G - Annualized Change of the Composite CPI by Section
- 4A - Annualized Change of the CPI-A by Section
- 4B - Annualized Change of the CPI-B by Section
- 5G - Changes of the Sections of Goods and Services of the Composite CPI
- 5A - Changes of the Sections of Goods and Services of the CPI-A
- 5B - Changes of the Sections of Goods and Services of the CPI-B
- 6G - Changes of the Subgroups of Goods and Services of the Composite CPI
- 6A - Changes of the Subgroups of Goods and Services of the CPI-A
- 6B - Changes of the Subgroups of Goods and Services of the CPI-B
- 7 - Average Retail Prices of Selected Food Items