

# CONSUMER PRICE INDEX

DECEMBER/ 2010

No.12

The average Composite CPI for the whole year of 2010 was 104.25 and the inflation rate for 2010 stood at 2.81%. The annual inflation rate was driven up by dearer prices of meals bought away from home, men's and women's clothing, fresh fish and seafood, gasoline, gold jewellery, vegetables and LP-gas, altogether contributed 1.9 percentage points to the increase in the annual inflation rate.

In 2010, notable increase was observed in the price index of various sections of goods and services, namely Clothing & Footwear (+6.51%); Transport (+6.30%); Miscellaneous Goods & Services (+6.13%); and Food & Non-Alcoholic Beverages (+4.73%); however, price indices of Education and Communication decreased by 7.27% and 3.49% compared with 2009.

The average CPI-A and CPI-B for 2010 increased by 2.28% and 2.97% in comparison with 2009.

The Composite CPI (106.17) for December 2010 rose by 3.92% year-on-year. Price indices of Transport (+6.94%); Miscellaneous Goods & Services (+6.65%); Health (+6.13%); Food & Non-Alcoholic Beverages (+4.78%); and Clothing & Footwear (+4.11%) recorded significant increase, which was caused by dearer prices of gasoline, airfare, gold jewellery, LP-gas, women's clothing and footwear, as well as rising charges for meals bought away from home, out-patience medical services and hairdressing and grooming services. On the contrary, reduced charges for mobile phone services lowered the price index of Communication to decrease by 3.60% year-on-year.

The CPI-A and CPI-B for December 2010 rose by 3.62% and 4.07% year-on-year respectively.

## 1 - CONSUMER PRICE INDEX

4/2008 - 3/2009 = 100				
	Unit	Composite CPI	CPI-A	CPI-B
Index value for December 2010		106.17	105.32	106.42
Year-on-year change	%	3.92	3.62	4.07
Annualized change	%	2.81	2.28	2.97
Month-to-month change	%	0.59	0.38	0.66
Index value for 2010		104.25	103.77	104.38

The Composite CPI for December 2010 increased by 0.59% month-to-month, with marked increase in the price indices of Clothing & Footwear (+2.99%); Household Goods & Furnishings (+1.50%); and Recreation & Culture (+1.28%); moreover, the CPI-A and CPI-B increased by 0.38% and 0.66% month-to-month.

The 2008/2009-based Composite CPI reflects the impact of price changes on the general population. The CPI-A relates to about 50% of the households, which have an average monthly expenditure of MOP6,000 to MOP18,999. The CPI-B relates to about 30% of the households, which have an average monthly expenditure of MOP19,000 to MOP34,999.

## 2 - CHANGES OF THE COMPOSITE CPI, CPI-A AND CPI-B BY SECTION

Goods and services	Year-on-year change			Month-to-month change			Annualized change			Contribution to the month-to-month change of the Global Index		
	Com- posite CPI	CPI-A	CPI-B	Com- posite CPI	CPI-A	CPI-B	Com- posite CPI	CPI-A	CPI-B	Com- posite CPI	CPI-A	CPI-B
Global Index	3.92	3.62	4.07	0.59	0.38	0.66	2.81	2.28	2.97	100.00	100.00	100.00
Food & Non-Alcoholic Beverages	4.78	4.56	4.96	0.05	-0.06	0.12	4.73	4.81	4.72	2.91	-5.99	6.23
Alcoholic Beverages & Tobacco	0.39	0.38	0.43	0 <sup>#</sup>	-0.01	0.02	4.72	5.05	4.84	0.01	-0.03	0.03
Clothing & Footwear	4.11	3.57	3.76	2.99	2.84	2.78	6.51	6.50	6.47	36.82	38.87	34.62
Housing & Fuels	2.53	2.60	2.50	0.33	0.32	0.33	0.42	0.22	0.26	11.91	21.82	9.81
Household Goods & Furnishings	3.30	3.25	3.15	1.50	1.10	1.66	1.47	1.51	1.24	7.76	6.23	8.84
Health	6.13	6.19	6.70	0.57	0.45	0.72	4.39	4.43	4.78	2.90	3.34	3.29
Transport	6.94	6.44	7.82	1.08	1.08	1.27	6.30	5.44	6.84	14.30	15.90	15.46
Communication	-3.60	-3.43	-3.70	-0 <sup>#</sup>	-0 <sup>#</sup>	-0 <sup>#</sup>	-3.49	-3.34	-3.59	-0.02	-0.04	-0.02
Recreation & Culture	2.57	3.19	2.54	1.28	1.05	1.23	3.99	4.46	3.86	12.67	12.92	11.89
Education	1.28	2.24	1.19	0.04	0.05	0.04	-7.27	-7.46	-6.64	0.31	0.52	0.25
Miscellaneous Goods & Services	6.65	5.20	6.63	0.72	0.40	0.69	6.13	4.98	6.13	10.44	6.44	9.61

0<sup>#</sup> Magnitude less than half of the unit employed

## 3 - TIME SERIES OF THE COMPOSITE CPI

4/2008 - 3/2009 = 100

Year/ Month	Global Index	Food & Non- Alcoholic Beverages	Alcoholic Beverages & Tobacco	Clothing & Footwear	Housing & Fuels	Household Goods & Furnishings	Health	Transport	Communi- cation	Recreation & Culture	Education	Miscel- laneous Goods & Services
Weight	100.00	32.78	1.12	6.75	22.82	3.13	2.90	7.88	3.52	5.93	5.16	8.02
2009	101.40	102.57	109.08	104.07	97.80	101.44	102.08	96.87	95.64	100.55	107.21	104.22
2010	104.25	107.41	114.23	110.84	98.21	102.94	106.57	102.97	92.30	104.56	99.42	110.61
2009												
12	102.17	103.54	113.87	112.90	97.26	101.72	103.32	99.27	95.63	102.84	99.00	106.91
2010												
1	102.14	104.19	113.90	109.69	97.19	101.90	104.04	100.52	92.51	101.74	99.00	107.36
2	103.27	105.92	114.14	106.72	97.53	101.94	103.91	101.53	92.45	108.13	99.01	110.24
3	103.01	106.59	114.18	105.66	97.66	102.16	104.30	101.92	92.42	102.14	99.01	108.59
4	103.68	107.26	114.23	110.16	97.78	102.48	104.64	102.76	92.39	102.49	99.01	108.76
5	104.06	107.48	114.27	113.64	98.02	102.78	105.44	101.19	92.26	103.47	99.01	109.44
6	104.39	107.63	114.33	114.13	98.28	102.85	105.79	102.85	92.30	103.47	99.01	110.01
7	104.61	107.91	114.22	111.76	98.26	102.93	107.41	103.35	92.28	106.17	99.01	110.58
8	104.38	107.81	114.25	108.10	98.00	103.05	107.77	103.32	92.20	107.64	99.02	110.76
9	104.66	108.45	114.30	108.13	98.22	103.23	108.31	103.01	92.20	105.41	100.23	111.88
10	105.07	108.83	114.31	110.42	98.46	103.35	108.47	103.99	92.19	104.44	100.23	112.43
11	105.55	108.43	114.30	114.13	99.39	103.52	109.04	105.02	92.19	104.15	100.23	113.20
12	106.17	108.49	114.31	117.54	99.72	105.08	109.66	106.16	92.18	105.48	100.26	114.01

## 4 - TIME SERIES OF THE CPI-A

4/2008 - 3/2009 = 100

Year/ Month	Global Index	Food & Non- Alcoholic Beverages	Alcoholic Beverages & Tobacco	Clothing & Footwear	Housing & Fuels	Household Goods & Furnishings	Health	Transport	Communi- cation	Recreation & Culture	Education	Miscel- laneous Goods & Services
Weight	100.00	36.94	1.44	4.82	27.22	2.19	2.71	5.78	4.22	4.71	4.00	5.96
2009	101.45	102.60	109.23	104.17	98.11	101.93	102.76	95.65	95.64	100.53	107.13	103.17
2010	103.77	107.54	114.74	110.95	98.32	103.47	107.31	100.85	92.45	105.02	99.13	108.31
2009												
12	101.64	103.58	114.37	113.40	97.31	102.08	104.15	97.50	95.63	102.79	98.40	105.06
2010												
1	101.66	104.30	114.41	110.03	97.27	102.30	104.75	98.64	92.62	101.87	98.40	105.29
2	103.00	106.27	114.69	107.08	97.68	102.36	104.67	99.46	92.57	108.80	98.41	109.59
3	102.80	106.86	114.73	105.87	97.81	102.56	104.92	100.12	92.55	102.92	98.41	106.83
4	103.36	107.51	114.77	110.12	97.93	102.94	105.22	101.02	92.53	103.20	98.41	106.95
5	103.61	107.64	114.80	113.64	98.15	103.29	105.84	99.21	92.42	103.89	98.41	107.30
6	103.85	107.75	114.85	114.07	98.40	103.39	106.14	100.72	92.45	103.70	98.41	107.55
7	104.06	108.04	114.72	112.00	98.38	103.50	108.20	101.07	92.43	105.95	98.41	108.09
8	103.81	107.88	114.75	108.34	98.06	103.65	108.59	100.83	92.36	107.45	98.43	108.22
9	104.25	108.57	114.80	108.17	98.27	103.91	109.23	100.89	92.36	106.15	100.56	109.54
10	104.60	108.99	114.80	110.41	98.50	104.05	109.44	101.76	92.36	105.25	100.56	109.74
11	104.91	108.36	114.80	114.19	99.52	104.25	110.10	102.67	92.35	104.96	100.56	110.09
12	105.32	108.30	114.80	117.44	99.84	105.40	110.59	103.78	92.35	106.06	100.61	110.52

## 5 - TIME SERIES OF THE CPI-B

4/2008 - 3/2009 = 100

Year/ Month	Global Index	Food & Non- Alcoholic Beverages	Alcoholic Beverages & Tobacco	Clothing & Footwear	Housing & Fuels	Household Goods & Furnishings	Health	Transport	Communi- cation	Recreation & Culture	Education	Miscel- laneous Goods & Services
Weight	100.00	32.59	1.06	7.63	20.76	3.60	2.91	8.04	3.32	6.45	5.03	8.60
2009	101.37	102.58	108.60	103.87	97.82	101.24	101.68	96.17	95.50	100.88	106.04	104.17
2010	104.38	107.42	113.85	110.59	98.08	102.50	106.54	102.74	92.08	104.78	99.00	110.56
2009												
12	102.26	103.56	113.49	112.42	97.16	101.47	102.93	98.67	95.49	103.09	98.62	106.82
2010												
1	102.20	104.17	113.51	109.32	97.08	101.61	103.78	100.02	92.29	101.89	98.62	107.30
2	103.28	105.78	113.72	106.40	97.38	101.61	103.59	100.96	92.23	108.05	98.62	110.13
3	103.05	106.54	113.75	105.48	97.51	101.78	104.12	101.63	92.20	102.24	98.62	108.58
4	103.81	107.22	113.82	110.24	97.64	102.05	104.53	102.71	92.17	102.65	98.62	108.74
5	104.24	107.49	113.89	113.91	97.89	102.31	105.53	100.92	92.04	103.71	98.62	109.41
6	104.60	107.65	113.95	114.37	98.15	102.39	105.95	102.67	92.08	103.78	98.62	109.99
7	104.77	107.88	113.85	111.78	98.12	102.47	107.48	103.00	92.06	106.49	98.62	110.56
8	104.52	107.84	113.90	107.87	97.90	102.55	107.83	102.89	91.98	107.89	98.63	110.72
9	104.78	108.44	113.96	107.69	98.12	102.73	108.33	102.81	91.97	105.74	99.76	111.90
10	105.19	108.80	113.96	109.85	98.37	102.84	108.47	103.89	91.97	104.76	99.76	112.38
11	105.72	108.56	113.96	113.49	99.26	102.96	109.04	105.04	91.96	104.42	99.76	113.13
12	106.42	108.69	113.98	116.64	99.59	104.67	109.83	106.38	91.96	105.71	99.79	113.91

## 6 – AVERAGE RETAIL PRICES OF SELECTED FOOD ITEMS

Item	Unit	Average retail price (MOP)					Rate of change (%)	
		2009	2010					
		December	September	October	November	December	Month-to-month	Year-on-year
Thai rice	kg	10.54	11.11	11.13	11.17	11.68	4.54	10.77
Beef		70.82	71.17	71.96	70.96	72.60	2.32	2.52
Beef shin		69.42	69.56	69.42	69.54	69.67	0.18	0.35
Lean meat		52.01	51.66	51.91	52.30	52.42	0.23	0.79
Pork chop		51.89	52.04	52.65	52.54	51.95	-1.12	0.11
Chicken		33.62	34.10	34.00	33.98	34.19	0.63	1.69
Golden thread		69.42	64.63	66.39	69.41	64.82	-6.61	-6.64
Pomfret		138.84	133.11	146.56	146.78	180.17	22.75	29.76
Sole		133.18	152.80	157.36	158.05	128.93	-18.43	-3.19
Grass carp		35.83	35.92	35.91	36.28	36.59	0.84	2.12
Head of "Tai U"		53.40	51.48	51.24	50.79	50.41	-0.76	-5.61
Fresh-water perch		73.20	76.67	75.27	76.28	76.13	-0.21	4.00
Chinese cabbage		11.32	13.77	14.79	11.77	10.38	-11.81	-8.29
Choy sum		15.64	18.02	18.69	14.65	15.29	4.39	-2.22
Chinese lettuce		9.34	13.28	15.40	10.43	7.97	-23.66	-14.75
Hairy gourd		10.60	10.87	12.80	11.09	10.64	-4.01	-0.42
Tomato		10.81	11.51	12.94	13.24	11.11	-16.11	2.75
Carrot		10.02	10.39	10.88	10.82	11.06	2.24	10.33
Banana	each	7.69	7.70	7.70	7.70	7.75	0.61	0.70
Orange		4.64	4.10	4.19	4.34	3.85	-11.22	-16.97
Apple		3.48	4.00	4.25	4.13	3.85	-6.81	10.47
Hen egg		1.17	1.13	1.12	1.12	1.13	0.96	-3.89

## 7 – CHANGES OF THE QUARTERLY COMPOSITE CPI

4/2008 - 3/2009 = 100

Year/ Quarter	Golbal Index	Food and Non- Alcoholic Beverages	Alcoholic Beverages and Tobacco	Clothing and Footwear	Housing and Fuels	Household Goods and Furnishings	Health	Transport	Communi- cation	Recreation and Culture	Education	Miscel- laneous Goods and Services
Weight	100.00	32.78	1.12	6.75	22.82	3.13	2.90	7.88	3.52	5.93	5.16	8.02
2009												
3	101.40	103.05	113.63	102.11	97.28	101.52	102.22	98.65	95.64	100.73	106.17	104.40
4	101.60	103.37	113.83	107.52	97.33	101.68	103.09	99.29	95.63	101.21	99.00	106.10
2010												
1	102.81	105.57	114.07	107.36	97.46	102.00	104.08	101.32	92.46	104.01	99.01	108.73
2	104.04	107.45	114.28	112.64	98.03	102.70	105.29	102.27	92.32	103.14	99.01	109.40
3	104.55	108.05	114.26	109.33	98.16	103.07	107.83	103.23	92.23	106.41	99.42	111.08
4	105.60	108.58	114.31	114.03	99.19	103.98	109.06	105.06	92.19	104.69	100.24	113.21
Rate of change (%)												
Quarter-to- quarter	1.00	0.49	0.04	4.30	1.05	0.88	1.14	1.77	-0.04	-1.61	0.83	1.93
Year-on-year	3.93	5.04	0.42	6.06	1.91	2.26	5.79	5.81	-3.60	3.44	1.25	6.71

CHART 1 - MOVEMENTS OF THE COMPOSITE CPI

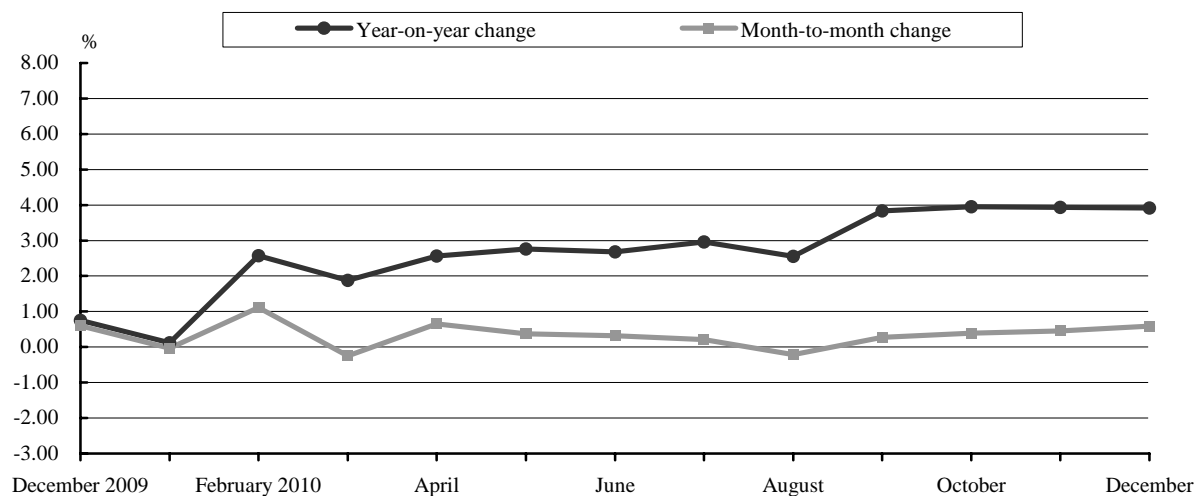


CHART 2 - MOVEMENTS OF THE CPI-A

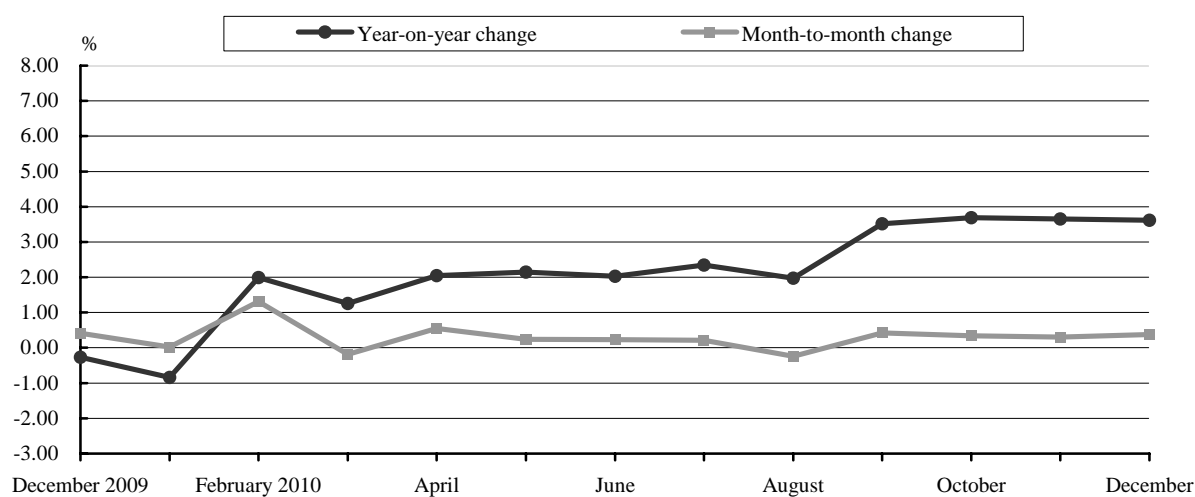
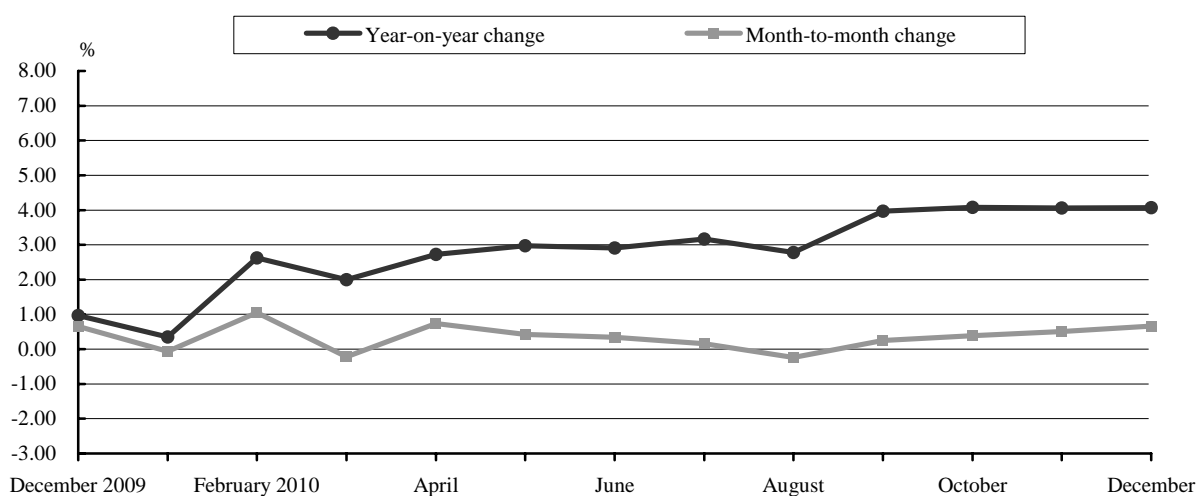


CHART 3 - MOVEMENTS OF THE CPI-B



---

**The following statistical tables are available for download from our website**

- 1G - Time Series of the Composite Consumer Price Index (Composite CPI) by Section
- 1A - Time Series of the Consumer Price Index A (CPI-A) by Section
- 1B - Time Series of the Consumer Price Index B (CPI-B) by Section
- 2G - Month-to-Month Change of the Composite CPI by Section
- 2A - Month-to-Month Change of the CPI-A by Section
- 2B - Month-to-Month Change of the CPI-B by Section
- 3G - Year-on-Year Change of the Composite CPI by Section
- 3A - Year-on-Year Change of the CPI-A by Section
- 3B - Year-on-Year Change of the CPI-B by Section
- 4G - Annualized Change of the Composite CPI by Section
- 4A - Annualized Change of the CPI-A by Section
- 4B - Annualized Change of the CPI-B by Section
- 5G - Changes of the Sections of Goods and Services of the Composite CPI
- 5A - Changes of the Sections of Goods and Services of the CPI-A
- 5B - Changes of the Sections of Goods and Services of the CPI-B
- 6G - Changes of the Subgroups of Goods and Services of the Composite CPI
- 6A - Changes of the Subgroups of Goods and Services of the CPI-A
- 6B - Changes of the Subgroups of Goods and Services of the CPI-B
- 7 - Average Retail Prices of Selected Food Items
- 8G - Changes of the Quarterly Composite CPI by Section
- 8A - Changes of the Quarterly CPI-A by Section
- 8B - Changes of the Quarterly CPI-B by Section