

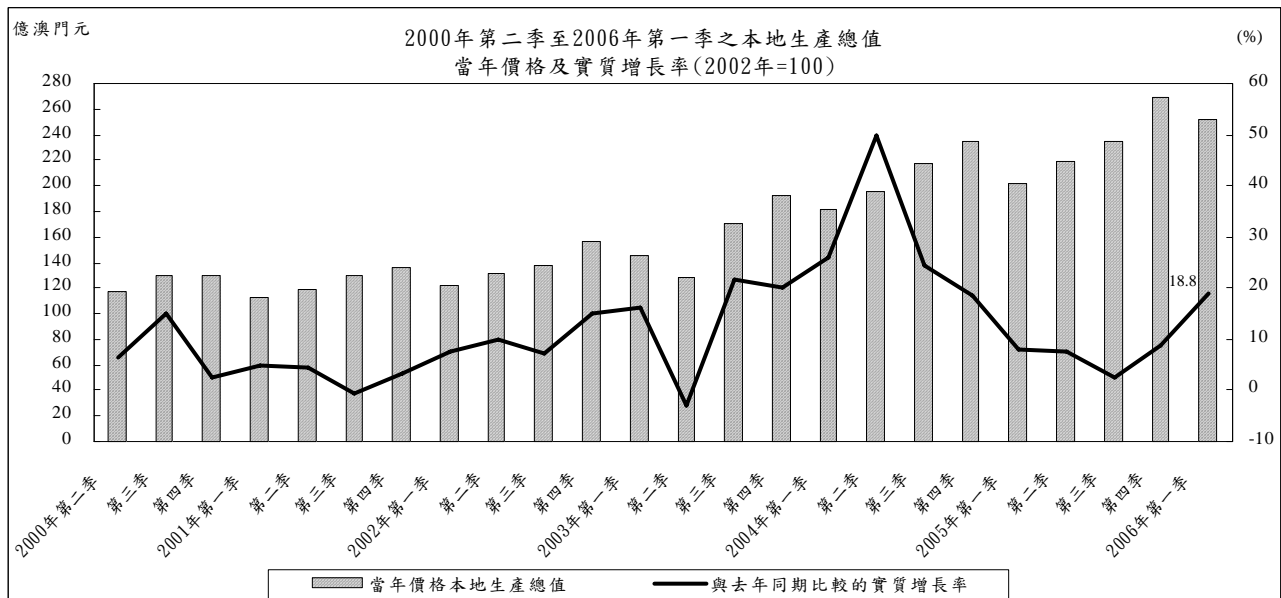
澳門特別行政區政府  
統計暨普查局

# 季度本地生產總值

二零零六年第一季

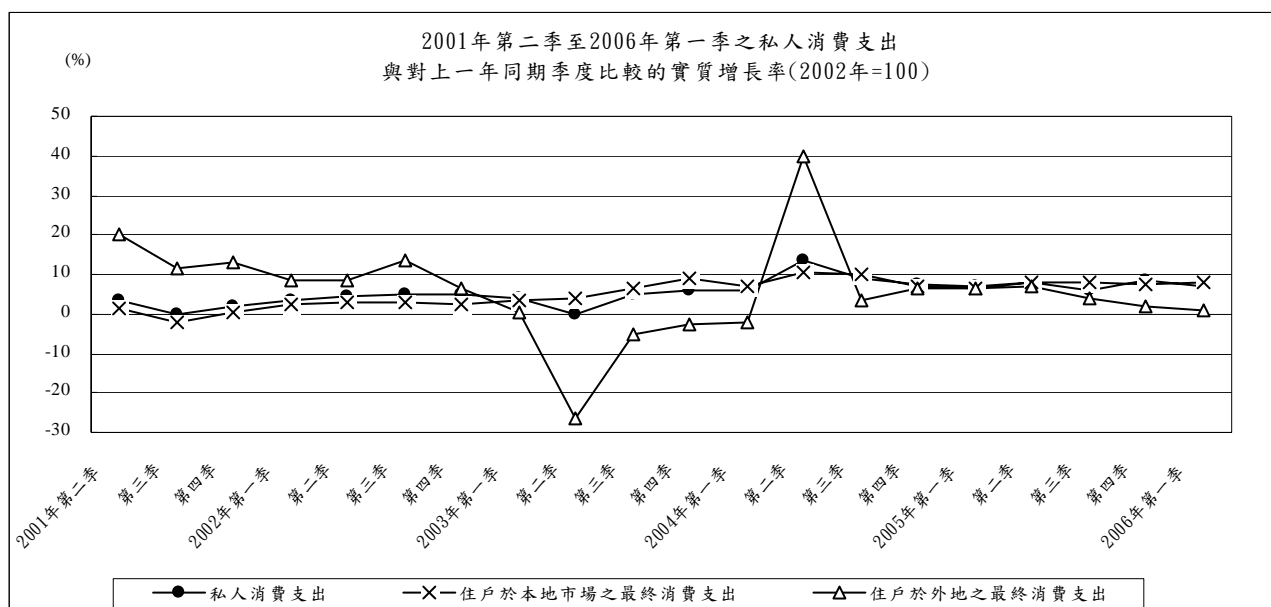
一號刊

2006年第一季博彩旅遊業的表現持續向好，其中博彩總收益(不計賞錢)與去年同期比較名義上升14.9%，旅客消費(不包括博彩消費)由於旅客數目增加及人均消費上升而錄得19.9%<sup>a</sup>的升幅，投資因多項大型工程全面施工而大幅上升，貨物出口大幅反彈，升幅高達36.9%。經綜合相關數據進行估算，第一季的本地生產總值錄得18.8%的實質增長。

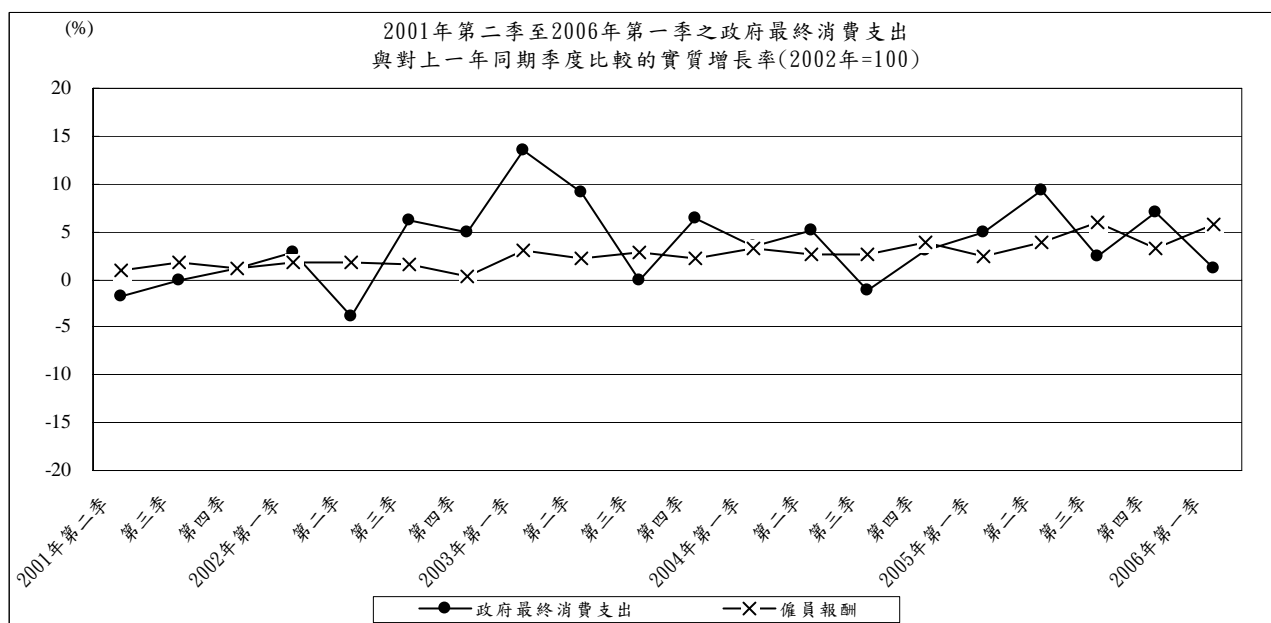


按本地生產總值各個主要組成部分分析，2006年第一季私人消費支出上升6.9%，較2005年第四季的8.5%為低；住戶在本地市場的最終消費支出上升8.2%，在外地的消費祇上升1.0%，其中在中國大陸的消費為4.84億澳門元，下跌2.2%。

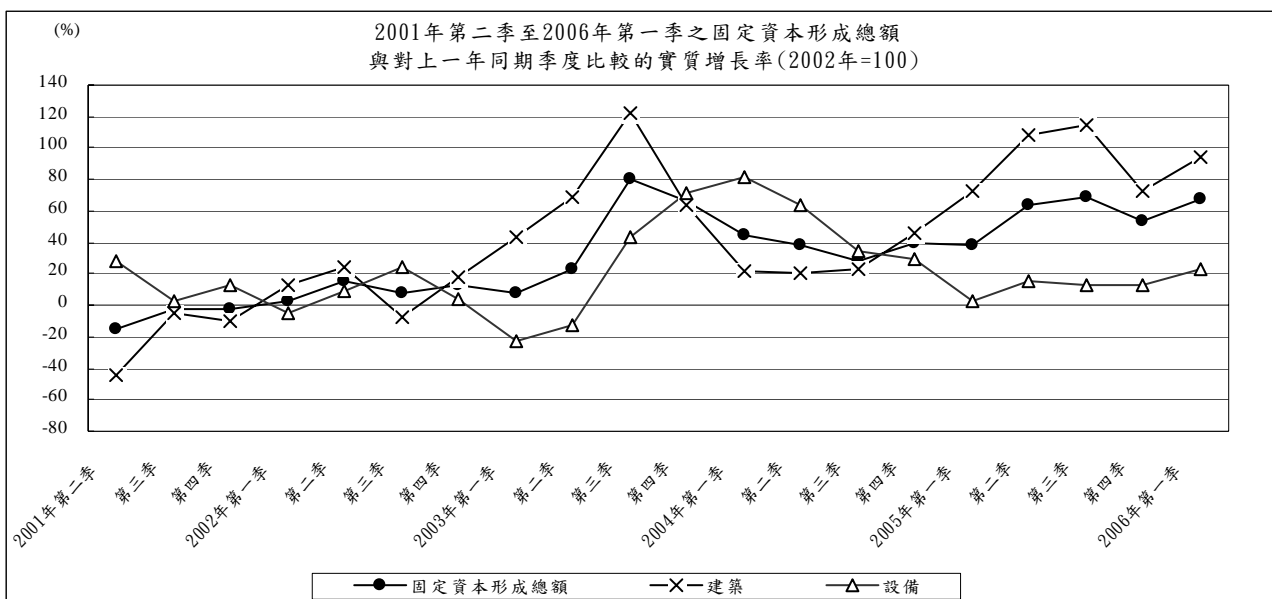
<sup>a</sup> 如無特別聲明，本分析所提及之變動率均是指與去年同期比較的實質變動率。



政府最終消費上升1.2%，較2005年第四季之7.0%為低，其中僱員報酬增長5.7%，而貨物及服務的淨購入則下跌36.6%。

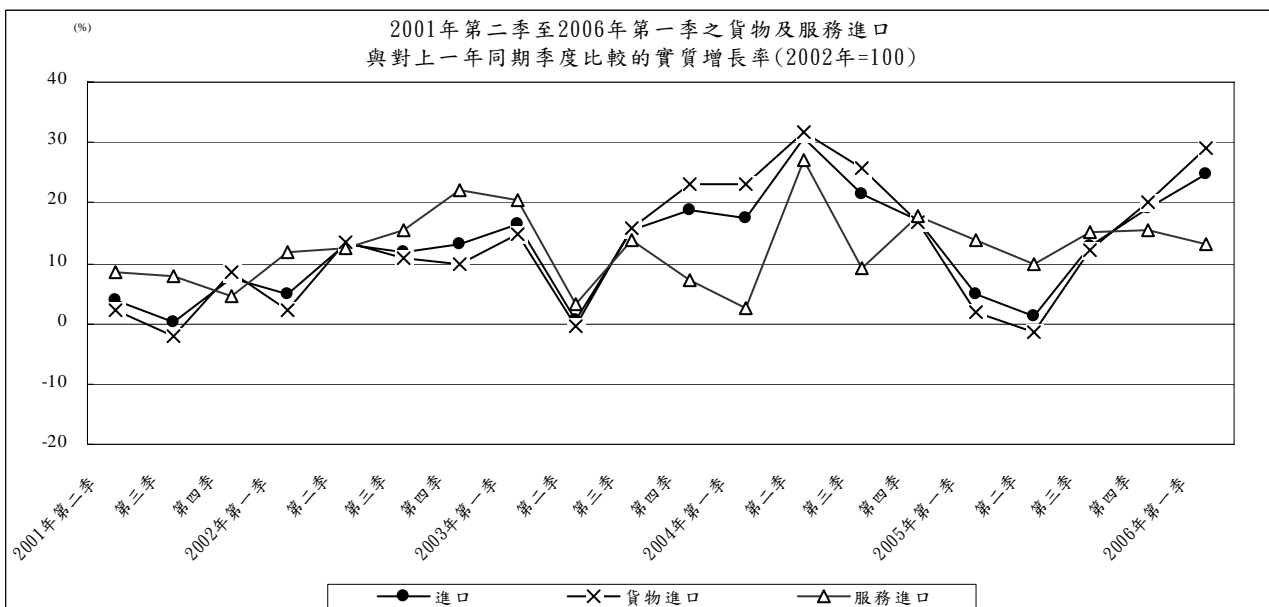
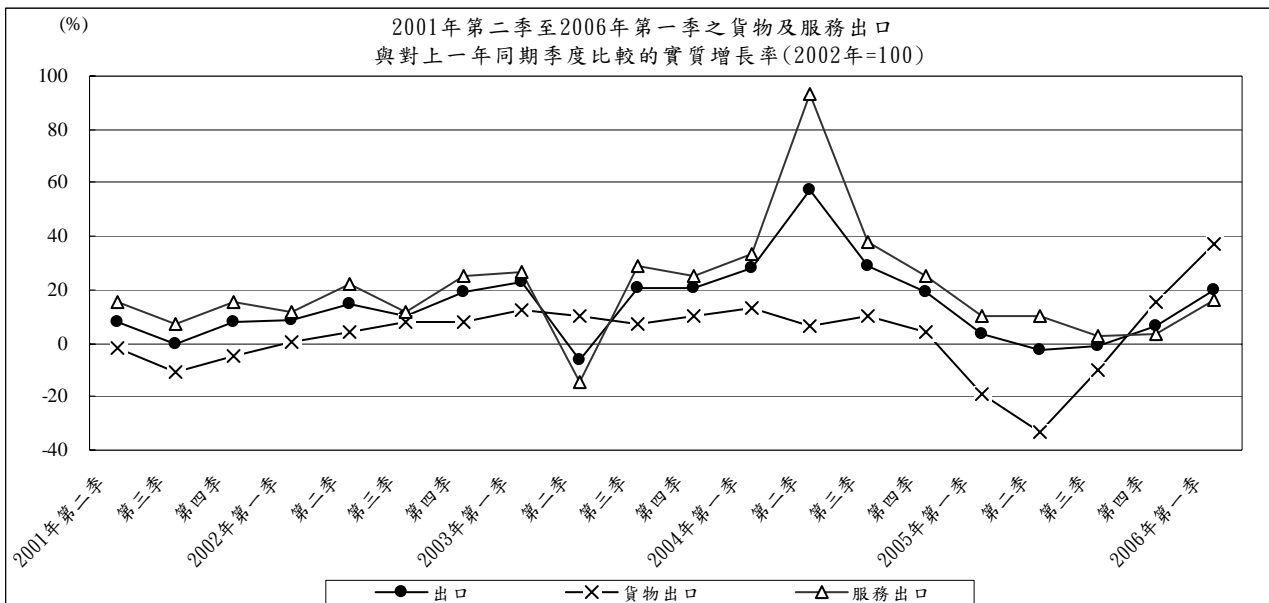


反映投資的固定資本形成總額大幅上升68.1%，較2005年第四季的53.8%為高，增長持續強勁。其中私人部門的投資錄得67.9%的升幅，主要是建築投資大幅上升94.0%所致，而設備投資亦上升22.9%；至於政府部門的投資上升79.8%，其中建築投資大幅上升92.4%，而設備投資下跌2.3%。綜合私人及政府部門的數據估算，2006年第一季的整體建築投資上升94.0%，較2005年第四季的72.5%為高；設備投資則上升22.7%，較2005年第四季的13.4%為高。



在有形貿易方面，貨物出口總額大幅反彈，名義升幅及實質升幅分別為36.4%及36.9%，均較2005年第四季的13.0%及15.2%為高，其中出口美國及歐盟分別錄得52.3%及77.6%的名義升幅；貨物進口<sup>b</sup>因需求增加而大幅上升，名義升幅及實質升幅分別為32.6%及28.9%，均較2005年第四季的25.3%及20.2%為高。至於無形貿易（服務出口）方面，博彩服務出口的升幅為14.6%；旅客消費(不包括博彩消費)因旅客入境人數增加及人均消費上升而錄得19.9%的升幅；運輸服務出口亦上升16.1%。綜合主要的服務出口數據估算，整體無形貿易出口的增幅為16.0%，較2005年第四季的3.5%為高。另一方面，服務進口上升13.3%，較2005年第四季的15.5%為低。

<sup>b</sup> 有關的貨物進口值是經過供給和使用的平衡分析進行調整，故此其增長率與本局的對外貿易統計的貨物進口增長率不同。



1. 1998年至2006年之本地生產總值、人均本地生產總值及本地生產總值之平減物價指數  
 Produto Interno Bruto, Produto Interno Bruto per capita e deflator implícito do Produto Interno Bruto, 1998 - 2006  
 Gross Domestic Product, per-capita Gross Domestic Product and implicit deflator of Gross Domestic Product, 1998 - 2006

年份	季	本地生產總值， 以當年價格計算	本地生產總值， 以不變(2002年) 價格計算	本地生產總值之 平減物價指數 (2002年=100)	人均本地生產總 值，以當年價格計 算	人均本地生產總值， 以不變(2002年) 價格計算
		Produto Interno Bruto, a preços correntes	Produto Interno Bruto, a preços constantes (2002)	Deflator implícito (ano:2002=100) do Produto Interno Bruto	Produto Interno Bruto per capita , a preços correntes	Produto Interno Bruto per capita , a preços constantes (2002)
Year	Quarter	Gross Domestic Product, at current prices	Gross Domestic Product, at constant (2002) prices	Implicit deflator (year:2002=100) of Gross Domestic Product	Per-capita Gross Domestic Product, at current prices	Per-capita Gross Domestic Product, at constant (2002) prices
		千澳門元 1000 MOP	千澳門元 1000 MOP		澳門元 MOP	澳門元 MOP
1		2	3	4	5	6
1998		49 360 446 (-7.3)	46 862 141 (-4.6)	105.3 (-2.8)	116 884 (-8.4)	110 968 (-5.7)
1999		47 287 433 (-4.2)	45 756 819 (-2.4)	103.3 (-1.9)	110 637 (-5.3)	107 056 (-3.5)
2000		48 972 396 (3.6)	48 386 399 (5.7)	101.2 (-2.1)	113 739 (2.8)	112 378 (5.0)
2001		49 704 405 (1.5)	49 783 977 (2.9)	99.8 (-1.4)	114 501 (0.7)	114 684 (2.1)
2002		54 818 745 (10.3)	54 818 745 (10.1)	100.0 (0.2)	125 058 (9.2)	125 058 (9.0)
2003		63 566 339 (16.0)	62 583 576 (14.2)	101.6 (1.6)	142 825 (14.2)	140 616 (12.4)
2004		82 899 311 (30.4)	80 282 266 (28.3)	103.3 (1.7)	181 433 (27.0)	175 705 (25.0)
2005		92 590 984 (11.7)	85 628 924 (6.7)	108.1 (4.7)	194 458 (7.2)	179 836 (2.4)
1999	1	11 330 882 (-5.0)	10 837 547 (-3.1)	104.6 (-1.9)	.. ..	.. ..
	2	11 145 060 (-11.6)	10 761 401 (-11.7)	103.6 (0.2)	.. ..	.. ..
	3	11 742 756 (-6.9)	11 401 607 (-3.8)	103.0 (-3.2)	.. ..	.. ..
	4	13 068 734 (7.0)	12 756 264 (9.7)	102.4 (-2.5)	.. ..	.. ..
2000	1	11 271 528 (-0.5)	10 740 974 (-0.9)	104.9 (0.4)	.. ..	.. ..
	2	11 678 777 (4.8)	11 465 103 (6.5)	101.9 (-1.6)	.. ..	.. ..
	3	13 017 268 (10.9)	13 096 407 (14.9)	99.4 (-3.5)	.. ..	.. ..
	4	13 004 822 (-0.5)	13 083 915 (2.6)	99.4 (-3.0)	.. ..	.. ..
2001	1	11 295 949 (0.2)	11 282 722 (5.0)	100.1 (-4.6)	.. ..	.. ..
	2	11 857 329 (1.5)	11 966 772 (4.4)	99.1 (-2.7)	.. ..	.. ..
	3	12 957 768 (-0.5)	13 030 035 (-0.5)	99.4 (0)	.. ..	.. ..
	4	13 593 359 (4.5)	13 504 448 (3.2)	100.7 (1.3)	.. ..	.. ..
2002	1	12 218 950 (8.2)	12 147 810 (7.7)	100.6 (0.5)	.. ..	.. ..
	2	13 188 650 (11.2)	13 146 656 (9.9)	100.3 (1.2)	.. ..	.. ..
	3	13 819 848 (6.7)	13 962 679 (7.2)	99.0 (-0.5)	.. ..	.. ..
	4	15 591 297 (14.7)	15 561 600 (15.2)	100.2 (-0.5)	.. ..	.. ..
2003	1	14 484 623 (18.5)	14 119 042 (16.2)	102.6 (2.0)	.. ..	.. ..
	2	12 878 083 (-2.4)	12 740 603 (-3.1)	101.1 (0.8)	.. ..	.. ..
	3	16 978 384 (22.9)	17 001 791 (21.8)	99.9 (0.9)	.. ..	.. ..
	4	19 225 248 (23.3)	18 722 140 (20.3)	102.7 (2.5)	.. ..	.. ..
2004	1	18 105 358 (25.0)	17 802 330 (26.1)	101.7 (-0.9)	.. ..	.. ..
	2	19 545 866 (51.8)	19 100 098 (49.9)	102.3 (1.2)	.. ..	.. ..
	3	21 813 962 (28.5)	21 157 869 (24.4)	103.1 (3.2)	.. ..	.. ..
	4	23 434 125 (21.9)	22 221 969 (18.7)	105.5 (2.7)	.. ..	.. ..
2005	1	20 255 656 (11.9)	19 194 472 (7.8)	105.5 (3.8)	.. ..	.. ..
	2	21 921 989 (12.2)	20 559 734 (7.6)	106.6 (4.2)	.. ..	.. ..
	3	23 472 812 (7.6)	21 676 733 (2.5)	108.3 (5.0)	.. ..	.. ..
	4	26 940 528 (15.0)	24 197 985 (8.9)	111.3 (5.6)	.. ..	.. ..
2006	1 <sup>@</sup>	25 135 887 (24.1)	22 801 932 (18.8)	110.2 (4.5)	.. ..	.. ..

@ : 數字在日後會作出修訂 Dado a ser revisto no futuro Figures are subject to revisions later on

季度本地生產總值  
**PRODUTO INTERNO BRUTO TRIMESTRAL**  
**QUARTERLY GROSS DOMESTIC PRODUCT**

二零零六年第一季 統計暨普查局 一號刊  
 1º TRIMESTRE/2006 DSEC Nº 1  
 1<sup>st</sup> QUARTER 2006 DSEC No. 1

2. 1998年至2006年以當年價格估算之本地生產總值及其主要支出項目

Produto Interno Bruto e principais componentes da despesa a preços correntes, 1998-2006

Gross Domestic Product and main components of expenditure at current prices, 1998-2006

千澳門元  
 1000 MOP

年份	季	本地生產總值 <sup>a</sup>	私人消費支出	政府最終消費支出	固定資本形成總額	庫存變化	貨物出口	服務出口	貨物進口	服務進口
Ano	Trimestre	Produto Interno Bruto <sup>a</sup>	Despesa de consumo privado	Despesa de consumo final do governo	Formação bruta de capital fixo	Variação de existências	Exportações de bens	Exportações de serviços	Importações de bens	Importações de serviços
Year	Quarter	Gross Domestic Product <sup>a</sup>	Private consumption expenditure	Government final consumption expenditure	Gross fixed capital formation	Changes in inventories	Exports of goods	Exports of services	Imports of goods	Imports of services
1		2	3	4	5	6	7	8	9	10
1998		49 360 446	20 231 861	6 182 197	8 829 850	- 71 820	17 083 615	24 672 961	21 915 363	5 652 856
1999		47 287 433	20 102 405	6 918 804	8 275 070	83 278	17 579 981	23 539 140	22 961 408	6 249 836
2000		48 972 396	19 706 940	6 045 116	5 618 314	73 717	20 380 421	28 799 077	24 392 564	7 258 625
2001		49 704 405	19 797 608	6 108 172	5 118 950	18 762	18 472 950	32 565 397	24 549 842	7 827 592
2002		54 818 745	20 222 476	6 322 928	5 800 686	240 156	18 925 409	38 240 607	25 985 045	8 948 473
2003		63 566 339	20 670 477	6 830 034	8 981 935	318 502	20 700 104	44 991 347	29 164 701	9 761 360
2004		82 899 311	22 811 649	7 093 229	13 426 302	600 879	22 561 083	64 712 378	37 092 900	11 213 310
2005		92 590 984	25 220 260	7 941 262	24 358 176	607 209	19 823 343	69 199 786	41 746 689	12 812 364
1999	1	11 330 882	5 140 900	1 224 635	2 232 991	18 432	3 700 336	6 127 200	5 702 339	1 411 273
	2	11 145 060	4 875 403	1 738 295	1 756 997	21 288	4 444 604	5 433 007	5 601 295	1 523 240
	3	11 742 756	5 055 636	1 557 713	1 985 683	22 483	5 152 744	5 680 801	6 096 083	1 616 221
	4	13 068 734	5 030 467	2 398 161	2 299 399	21 074	4 282 297	6 298 131	5 561 692	1 699 103
2000	1	11 271 528	4 949 478	1 032 925	1 285 560	14 564	4 022 333	6 783 186	5 219 233	1 597 285
	2	11 678 777	4 750 500	1 637 598	1 427 568	19 491	5 252 116	6 523 719	6 136 870	1 795 346
	3	13 017 268	5 153 324	1 366 217	1 215 229	20 596	5 994 822	7 945 027	6 768 867	1 909 081
	4	13 004 822	4 853 638	2 008 376	1 689 957	19 065	5 111 150	7 547 145	6 267 595	1 956 914
2001	1	11 295 949	5 015 663	1 057 163	1 248 545	3 945	3 639 576	7 830 792	5 674 568	1 825 165
	2	11 857 329	4 856 706	1 629 343	1 159 770	5 082	4 876 905	7 520 187	6 253 966	1 936 697
	3	12 957 768	5 094 690	1 382 915	1 114 258	5 101	5 307 969	8 530 126	6 444 973	2 032 317
	4	13 593 359	4 830 548	2 038 752	1 596 378	4 635	4 648 500	8 684 293	6 176 334	2 033 413
2002	1	12 218 950	5 071 278	1 110 323	1 306 224	47 843	3 563 344	8 734 180	5 586 302	2 027 941
	2	13 188 650	4 939 437	1 583 111	1 345 032	62 746	4 917 642	9 144 805	6 650 528	2 153 596
	3	13 819 848	5 225 787	1 479 284	1 271 956	66 986	5 478 065	9 521 810	6 904 133	2 319 907
	4	15 591 297	4 985 974	2 150 209	1 877 474	62 580	4 966 358	10 839 812	6 844 082	2 447 030
2003	1	14 484 623	5 172 802	1 276 165	1 509 134	63 131	4 053 280	11 111 934	6 291 560	2 410 262
	2	12 878 083	4 873 781	1 747 718	1 756 532	81 373	5 363 771	7 793 554	6 567 709	2 170 936
	3	16 978 384	5 406 278	1 492 967	2 387 380	88 075	5 865 683	12 346 809	8 025 467	2 583 340
	4	19 225 248	5 217 616	2 313 184	3 328 890	85 923	5 417 370	13 739 051	8 279 965	2 596 821
2004	1	18 105 358	5 470 065	1 340 666	2 322 013	118 756	4 267 873	14 887 090	7 847 488	2 453 616
	2	19 545 866	5 572 188	1 857 424	2 591 756	152 800	5 848 739	15 301 982	8 984 298	2 794 727
	3	21 813 962	6 023 433	1 494 090	3 343 911	171 565	6 725 244	17 206 733	10 277 378	2 873 635
	4	23 434 125	5 745 964	2 401 049	5 168 623	157 758	5 719 227	17 316 573	9 983 736	3 091 332
2005	1	20 255 656	6 027 089	1 488 687	3 619 125	111 655	3 498 833	16 495 185	8 178 099	2 806 818
	2	21 921 989	6 163 219	2 131 669	4 940 658	131 284	3 886 763	16 877 196	9 131 523	3 077 277
	3	23 472 812	6 609 496	1 619 168	6 619 354	178 502	5 976 347	17 732 607	11 931 140	3 331 523
	4	26 940 528	6 420 457	2 701 738	9 179 039	185 768	6 461 400	18 094 798	12 505 928	3 596 745
2006	1 <sup>®</sup>	25 135 887	6 615 707	1 518 606	6 739 168	149 469	4 771 801	19 399 698	10 845 679	3 212 882

a 本地生產總值 / PIB / GDP = 3+4+5+6+7+8-9-10

3. 1999年至2006年以當年價格估算之本地生產總值及其主要支出項目的名義變動率

Taxas de variação homóloga do Produto Interno Bruto e principais componentes da despesa a preços correntes, 1999-2006  
 Year-on-year growth rates of Gross Domestic Product and main components of expenditure at current prices, 1999-2006

		%								
年份	季	本地生產總值	私人消費支出	政府最終消費支出	固定資本形成總額	庫存變化	貨物出口	服務出口	貨物進口	服務進口
Ano	Trimestre	Produto Interno Bruto	Despesa de consumo privado	Despesa de consumo final do governo	Formação bruta de capital fixo	Variação de existências	Exportações de bens	Exportações de serviços	Importações de bens	Importações de serviços
Year	Quarter	Gross Domestic Product	Private consumption expenditure	Government final consumption expenditure	Gross fixed capital formation	Changes in inventories	Exports of goods	Exports of services	Imports of goods	Imports of services
1		2	3	4	5	6	7	8	9	10
1999		- 4.2	- 0.6	11.9	- 6.3	216.0	2.9	- 4.6	4.8	10.6
2000		3.6	- 2.0	- 12.6	- 32.1	- 11.5	15.9	22.3	6.2	16.1
2001		1.5	0.5	1.0	- 8.9	- 74.5	- 9.4	13.1	0.6	7.8
2002		10.3	2.1	3.5	13.3	1 180.0	2.4	17.4	5.8	14.3
2003		16.0	2.2	8.0	54.8	32.6	9.4	17.7	12.2	9.1
2004		30.4	10.4	3.9	49.5	88.7	9.0	43.8	27.2	14.9
2005		11.7	10.6	12.0	81.4	1.1	- 12.1	6.9	12.5	14.3
1999	1	- 5.0	- 0.6	7.8	1.8	229.9	17.9	- 9.3	10.7	8.3
	2	- 11.6	- 2.9	2.5	- 21.0	211.7	1.3	- 11.7	3.4	5.5
	3	- 6.9	- 2.1	9.6	- 4.8	212.8	2.1	- 7.5	4.8	14.8
	4	7.0	3.2	24.3	- 1.1	213.1	- 5.1	12.0	0.5	13.4
2000	1	- 0.5	- 3.7	- 15.7	- 42.4	- 21.0	8.7	10.7	- 8.5	13.2
	2	4.8	- 2.6	- 5.8	- 18.7	- 8.4	18.2	20.1	9.6	17.9
	3	10.9	1.9	- 12.3	- 38.8	- 8.4	16.3	39.9	11.0	18.1
	4	- 0.5	- 3.5	- 16.3	- 26.5	- 9.5	19.4	19.8	12.7	15.2
2001	1	0.2	1.3	2.3	- 2.9	- 72.9	- 9.5	15.4	8.7	14.3
	2	1.5	2.2	- 0.5	- 18.8	- 73.9	- 7.1	15.3	1.9	7.9
	3	- 0.5	- 1.1	1.2	- 8.3	- 75.2	- 11.5	7.4	- 4.8	6.5
	4	4.5	- 0.5	1.5	- 5.5	- 75.7	- 9.1	15.1	- 1.5	3.9
2002	1	8.2	1.1	5.0	4.6	1 112.7	- 2.1	11.5	- 1.6	11.1
	2	11.2	1.7	- 2.8	16.0	1 134.7	0.8	21.6	6.3	11.2
	3	6.7	2.6	7.0	14.2	1 213.3	3.2	11.6	7.1	14.2
	4	14.7	3.2	5.5	17.6	1 250.3	6.8	24.8	10.8	20.3
2003	1	18.5	2.0	14.9	15.5	32.0	13.7	27.2	12.6	18.9
	2	- 2.4	- 1.3	10.4	30.6	29.7	9.1	- 14.8	- 1.2	0.8
	3	22.9	3.5	0.9	87.7	31.5	7.1	29.7	16.2	11.4
	4	23.3	4.6	7.6	77.3	37.3	9.1	26.7	21.0	6.1
2004	1	25.0	5.7	5.1	53.9	88.1	5.3	34.0	24.7	1.8
	2	51.8	14.3	6.3	47.5	87.8	9.0	96.3	36.8	28.7
	3	28.5	11.4	0.1	40.1	94.8	14.7	39.4	28.1	11.2
	4	21.9	10.1	3.8	55.3	83.6	5.6	26.0	20.6	19.0
2005	1	11.9	10.2	11.0	55.9	- 6.0	- 18.0	10.8	4.2	14.4
	2	12.2	10.6	14.8	90.6	- 14.1	- 33.5	10.3	1.6	10.1
	3	7.6	9.7	8.4	98.0	4.0	- 11.1	3.1	16.1	15.9
	4	15.0	11.7	12.5	77.6	17.8	13.0	4.5	25.3	16.3
2006	1 <sup>®</sup>	24.1	9.8	2.0	86.2	33.9	36.4	17.6	32.6	14.5

季度本地生產總值  
 PRODUTO INTERNO BRUTO TRIMESTRAL  
 QUARTERLY GROSS DOMESTIC PRODUCT

二零零六年第一季 統計暨普查局 一號刊  
 1º TRIMESTRE/2006 DSEC Nº 1  
 1<sup>st</sup> QUARTER 2006 DSEC No. 1

4. 1998年至2006年以不變(2002年)價格估算之本地生產總值及其主要支出項目

Produto Interno Bruto e principais componentes da despesa a preços constantes (2002), 1998-2006

Gross Domestic Product and main components of expenditure at constant (2002) prices, 1998-2006

千澳門元  
1000 MOP

年份	季	本地生產總值	私人消費支出	政府最終消費支出	固定資本形成總額	庫存變化	貨物出口	服務出口	貨物進口	服務進口
Ano	Trimestre	Produto Interno Bruto	Despesa de consumo privado	Despesa de consumo final do governo	Formação bruta de capital fixo	Variação de existências	Exportações de bens	Exportações de serviços	Importações de bens	Importações de serviços
Year	Quarter	Gross Domestic Product	Private consumption expenditure	Government final consumption expenditure	Gross fixed capital formation	Changes in inventories	Exports of goods	Exports of services	Imports of goods	Imports of services
1		2	3	4	5	6	7	8	9	10
1998		46 862 141	18 718 917	6 266 314	7 742 829	- 69 102	16 108 482	24 275 451	20 974 852	5 205 898
1999		45 756 819	19 181 713	7 082 229	7 883 604	81 426	16 689 573	23 413 389	22 559 444	6 015 670
2000		48 386 399	18 996 874	6 159 955	5 505 331	68 298	19 034 799	28 718 795	22 973 910	7 123 743
2001		49 783 977	19 351 375	6 166 151	5 301 510	17 933	17 936 446	32 512 311	23 763 600	7 738 147
2002		54 818 745	20 222 476	6 322 928	5 800 686	240 156	18 925 409	38 240 607	25 985 045	8 948 473
2003		62 583 576	20 949 873	6 755 793	8 449 795	324 007	20 696 608	44 780 990	29 445 278	9 928 212
2004		80 282 266	22 820 505	6 937 695	11 590 539	590 668	22 422 708	63 744 262	36 518 705	11 305 407
2005		85 628 924	24 522 726	7 372 813	18 189 893	556 595	19 837 414	67 709 592	39 707 610	12 852 499
1999	1	10 837 547	4 849 135	1 264 261	2 224 234	18 570	3 478 538	6 065 915	5 711 444	1 351 662
	2	10 761 401	4 644 978	1 784 409	1 622 956	21 295	4 352 104	5 406 824	5 610 239	1 460 927
	3	11 401 607	4 856 201	1 592 449	1 873 697	21 886	4 927 573	5 668 567	5 979 141	1 559 625
	4	12 756 264	4 831 398	2 441 109	2 162 717	19 674	3 931 358	6 272 084	5 258 620	1 643 456
2000	1	10 740 974	4 752 923	1 074 958	1 213 695	13 935	3 537 398	6 767 304	5 049 764	1 569 475
	2	11 465 103	4 578 509	1 674 979	1 398 122	18 150	4 883 638	6 514 731	5 842 316	1 760 708
	3	13 096 407	4 976 926	1 390 416	1 205 031	19 188	5 851 792	7 919 871	6 405 431	1 861 387
	4	13 083 915	4 688 516	2 019 602	1 688 484	17 026	4 761 972	7 516 889	5 676 400	1 932 174
2001	1	11 282 722	4 871 443	1 084 137	1 294 687	3 661	3 377 555	7 811 048	5 358 132	1 801 676
	2	11 966 772	4 726 865	1 647 076	1 179 042	4 790	4 790 363	7 507 955	5 977 161	1 912 159
	3	13 030 035	4 982 766	1 390 350	1 181 552	4 915	5 235 638	8 513 314	6 274 373	2 004 128
	4	13 504 448	4 770 300	2 044 588	1 646 229	4 566	4 532 890	8 679 994	6 153 934	2 020 184
2002	1	12 147 810	5 033 828	1 115 655	1 321 385	47 520	3 405 422	8 719 508	5 480 716	2 014 792
	2	13 146 656	4 943 735	1 584 953	1 358 315	63 647	4 989 931	9 143 130	6 786 103	2 150 952
	3	13 962 679	5 235 407	1 475 577	1 267 192	67 258	5 644 203	9 535 028	6 947 136	2 314 850
	4	15 561 600	5 009 505	2 146 744	1 853 794	61 732	4 885 853	10 842 942	6 771 090	2 467 880
2003	1	14 119 042	5 218 974	1 267 258	1 417 663	63 849	3 817 954	11 057 915	6 297 920	2 426 651
	2	12 740 603	4 933 563	1 730 899	1 673 097	83 300	5 480 248	7 810 952	6 754 243	2 217 212
	3	17 001 791	5 501 595	1 475 208	2 279 602	88 933	6 032 358	12 311 839	8 051 642	2 636 101
	4	18 722 140	5 295 742	2 282 428	3 079 433	87 925	5 366 048	13 600 284	8 341 472	2 648 247
2004	1	17 802 330	5 528 381	1 310 323	2 056 034	117 892	4 327 752	14 706 147	7 757 405	2 486 795
	2	19 100 098	5 604 450	1 819 107	2 305 617	150 391	5 837 634	15 102 045	8 903 213	2 815 933
	3	21 157 869	6 001 570	1 457 789	2 915 103	169 336	6 655 740	16 958 060	10 119 115	2 880 614
	4	22 221 969	5 686 106	2 350 477	4 313 784	153 049	5 601 582	16 978 010	9 738 972	3 122 066
2005	1	19 194 472	5 928 830	1 375 988	2 851 402	107 159	3 514 029	16 152 691	7 902 740	2 832 887
	2	20 559 734	6 048 297	1 988 863	3 785 391	121 976	3 876 253	16 595 233	8 762 223	3 094 056
	3	21 676 733	6 373 955	1 493 973	4 917 317	163 314	5 995 104	17 385 225	11 333 670	3 318 485
	4	24 197 985	6 171 643	2 513 989	6 635 783	164 146	6 452 029	17 576 443	11 708 977	3 607 071
2006	1 <sup>®</sup>	22 801 932	6 340 577	1 392 540	4 793 493	131 873	4 809 476	18 731 413	10 188 026	3 209 414

5. 1999年至2006年以不變(2002年)價格估算之本地生產總值及其主要支出項目的實質增長率

Taxas de variação homóloga do Produto Interno Bruto e principais componentes da despesa a preços constantes (2002), 1999-2006  
 Year-on-year growth rates of Gross Domestic Product and main components of expenditure at constant (2002) prices, 1999-2006

		%								
年份	季	本地生產總值	私人消費支出	政府最終消費支出	固定資本形成總額	庫存變化	貨物出口	服務出口	貨物進口	服務進口
Ano	Trimestre	Produto Interno Bruto	Despesa de consumo privado	Despesa de consumo final do governo	Formação bruta de capital fixo	Variação de existências	Exportações de bens	Exportações de serviços	Importações de bens	Importações de serviços
Year	Quarter	Gross Domestic Product	Private consumption expenditure	Government final consumption expenditure	Gross fixed capital formation	Changes in inventories	Exports of goods	Exports of services	Imports of goods	Imports of services
1		2	3	4	5	6	7	8	9	10
1999		- 2.4	2.5	13.0	1.8	217.8	3.6	- 3.6	7.6	15.6
2000		5.7	- 1.0	- 13.0	- 30.2	- 16.1	14.1	22.7	1.8	18.4
2001		2.9	1.9	0.1	- 3.7	- 73.7	- 5.8	13.2	3.4	8.6
2002		10.1	4.5	2.5	9.4	1 239.2	5.5	17.6	9.3	15.6
2003		14.2	3.6	6.8	45.7	34.9	9.4	17.1	13.3	10.9
2004		28.3	8.9	2.7	37.2	82.3	8.3	42.3	24.0	13.9
2005		6.7	7.5	6.3	56.9	- 5.8	- 11.5	6.2	8.7	13.7
1999	1	- 3.1	2.3	8.8	21.8	240.2	26.4	- 8.2	21.9	12.4
	2	- 11.7	0.3	4.0	- 12.5	221.6	4.4	- 10.9	14.1	11.0
	3	- 3.8	1.4	10.5	- 1.2	210.4	1.9	- 6.4	2.1	20.9
	4	9.7	6.1	25.3	- 0.1	206.3	- 9.6	13.1	- 4.7	17.7
2000	1	- 0.9	- 2.0	- 15.0	- 45.4	- 25.0	1.7	11.6	- 11.6	16.1
	2	6.5	- 1.4	- 6.1	- 13.9	- 14.8	12.2	20.5	4.1	20.5
	3	14.9	2.5	- 12.7	- 35.7	- 12.3	18.8	39.7	7.1	19.3
	4	2.6	- 3.0	- 17.3	- 21.9	- 13.5	21.1	19.8	7.9	17.6
2001	1	5.0	2.5	0.9	6.7	- 73.7	- 4.5	15.4	6.1	14.8
	2	4.4	3.2	- 1.7	- 15.7	- 73.6	- 1.9	15.2	2.3	8.6
	3	- 0.5	0.1	o	- 1.9	- 74.4	- 10.5	7.5	- 2.0	7.7
	4	3.2	1.7	1.2	- 2.5	- 73.2	- 4.8	15.5	8.4	4.6
2002	1	7.7	3.3	2.9	2.1	1 198.0	0.8	11.6	2.3	11.8
	2	9.9	4.6	- 3.8	15.2	1 228.6	4.2	21.8	13.5	12.5
	3	7.2	5.1	6.1	7.2	1 268.4	7.8	12.0	10.7	15.5
	4	15.2	5.0	5.0	12.6	1 251.9	7.8	24.9	10.0	22.2
2003	1	16.2	3.7	13.6	7.3	34.4	12.1	26.8	14.9	20.4
	2	- 3.1	- 0.2	9.2	23.2	30.9	9.8	- 14.6	- 0.5	3.1
	3	21.8	5.1	o	79.9	32.2	6.9	29.1	15.9	13.9
	4	20.3	5.7	6.3	66.1	42.4	9.8	25.4	23.2	7.3
2004	1	26.1	5.9	3.4	45.0	84.6	13.4	33.0	23.2	2.5
	2	49.9	13.6	5.1	37.8	80.5	6.5	93.3	31.8	27.0
	3	24.4	9.1	- 1.2	27.9	90.4	10.3	37.7	25.7	9.3
	4	18.7	7.4	3.0	40.1	74.1	4.4	24.8	16.8	17.9
2005	1	7.8	7.2	5.0	38.7	- 9.1	- 18.8	9.8	1.9	13.9
	2	7.6	7.9	9.3	64.2	- 18.9	- 33.6	9.9	- 1.6	9.9
	3	2.5	6.2	2.5	68.7	- 3.6	- 9.9	2.5	12.0	15.2
	4	8.9	8.5	7.0	53.8	7.3	15.2	3.5	20.2	15.5
2006	1 <sup>@</sup>	18.8	6.9	1.2	68.1	23.1	36.9	16.0	28.9	13.3

以下統計表可在本局網頁下載

**Os quadros abaixo indicados podem ser consultados na homepage da DSEC**  
**The following statistical tables can be downloaded from our website**

6. 1998 年至 2006 年本地生產總值及其主要支出項目之名義結構  
Estrutura nominal do Produto Interno Bruto e das principais componentes da despesa, 1998 - 2006  
Nominal structure of Gross Domestic Product and main components of expenditure, 1998 - 2006
7. 1998 年至 2006 年本地生產總值及其主要支出項目之實質結構(2002 年=100)  
Estrutura real (ano: 2002=100) do Produto Interno Bruto e das principais componentes da despesa, 1998 - 2006  
Real structure (year: 2002=100) of Gross Domestic Product and main components of expenditure, 1998 -2006
8. 1998 年至 2006 年以當年價格估算之私人消費支出  
Despesa de consumo privado a preços correntes, 1998 - 2006  
Private consumption expenditure at current prices, 1998 - 2006
9. 1999 年至 2006 年以當年價格估算之私人消費支出的名義變動率  
Taxas de variação homóloga de despesa de consumo privado a preços correntes, 1999 - 2006  
Year-on-year growth rates of private consumption expenditure at current prices, 1999 - 2006
10. 1998 年至 2006 年以不變(2002 年)價格估算之私人消費支出  
Despesa de consumo privado a preços constantes (2002), 1998 - 2006  
Private consumption expenditure at constant (2002) prices, 1998 - 2006
11. 1999 年至 2006 年以不變(2002 年)價格估算之私人消費支出的實質變動率  
Taxas de variação homóloga de despesa de consumo privado a preços constantes (2002), 1999 - 2006  
Year-on-year growth rates of private consumption expenditure at constant (2002) prices, 1999 - 2006
12. 1998 年至 2006 年以當年價格估算之政府最終消費支出  
Despesa de consumo final do governo a preço correntes, 1998 - 2006  
Government final consumption expenditure at current prices, 1998 - 2006

- 
13. 1999 年至 2006 年以當年價格估算之政府最終消費支出的名義變動率  
Taxas de variação homóloga de despesa de consumo final do governo a preço correntes, 1999 - 2006  
Year-on-year growth rates of government final consumption expenditure at current prices, 1999 - 2006
  14. 1998 年至 2006 年以不變(2002 年)價格估算之政府最終消費支出  
Despesa de consumo final do governo a preço constantes (2002), 1998 - 2006  
Government final consumption expenditure at constant (2002) prices, 1998 - 2006
  15. 1999 年至 2006 年以不變(2002 年)價格估算之政府最終消費支出的實質變動率  
Taxas de variação homóloga de despesa de consumo final do governo a preço constantes (2002), 1999 - 2006  
Year-on-year growth rates of government final consumption expenditure at constant (2002) prices, 1999-2006
  16. 1998 年至 2006 年以當年價格估算之固定資本形成總額  
Formação bruta de capita fixo a preços correntes, 1998 - 2006  
Gross fixed capital formation at current prices, 1998 - 2006
  17. 1999 年至 2006 年以當年價格估算之固定資本形成總額的名義變動率  
Taxas de variação homóloga de formação bruta de capita fixo a preços correntes, 1999 - 2006  
Year-on-year growth rates of gross fixed capital formation at current prices, 1999 - 2006
  18. 1998 年至 2006 年以不變(2002 年)價格估算之固定資本形成總額  
Formação bruta de capita fixo a preços constantes (2002), 1998 - 2006  
Gross fixed capital formation at constant (2002) prices, 1998 - 2006
  19. 1999 年至 2006 年以不變(2002 年)價格估算之固定資本形成總額的實質變動率  
Taxas de variação homóloga de formação bruta de capita fixo a preços constantes (2002), 1999 - 2006  
Year-on-year growth rates of gross fixed capital formation at constant (2002) prices, 1999 - 2006
  20. 1998 年至 2006 年以當年價格估算之出口  
Exportações a preços correntes, 1998 - 2006  
Exports at current prices, 1998 - 2006
  21. 1999 年至 2006 年以當年價格估算之出口的名義變動率  
Taxas de variação homóloga de exportações a preços correntes, 1999 - 2006  
Year-on-year growth rates of exports at current prices, 1999 - 2006

22. 1998 年至 2006 年以不變(2002 年)價格估算之出口  
Exportações a preços constantes (2002), 1998 - 2006  
Exports at constant (2002) prices, 1998 - 2006
23. 1999 年至 2006 年以不變(2002 年)價格估算之出口的實質變動率  
Taxas de variação homóloga de exportações a preços constantes (2002), 1999 - 2006  
Year-on-year growth rates of exports at constant (2002) prices, 1999 - 2006
24. 1998 年至 2006 年以當年價格估算之進口  
Importações a preços correntes, 1998 - 2006  
Imports at current prices, 1998 - 2006
25. 1999 年至 2006 年以當年價格估算之進口的名義增長率  
Taxas de variação homóloga de importações a preços correntes, 1999 - 2006  
Year-on-year growth rates of imports at current prices, 1999 - 2006
26. 1998 年至 2006 年以不變(2002 年)價格估算之進口  
Importações a preços constantes (2002), 1998 - 2006  
Imports at constant (2002) prices, 1998 - 2006
27. 1999 年至 2006 年以不變(2002 年)價格估算之進口的實質增長率  
Taxas de variação homóloga de importações a preços constantes (2002), 1999 - 2006  
Year-on-year growth rates of imports at constant (2002) prices, 1999 - 2006