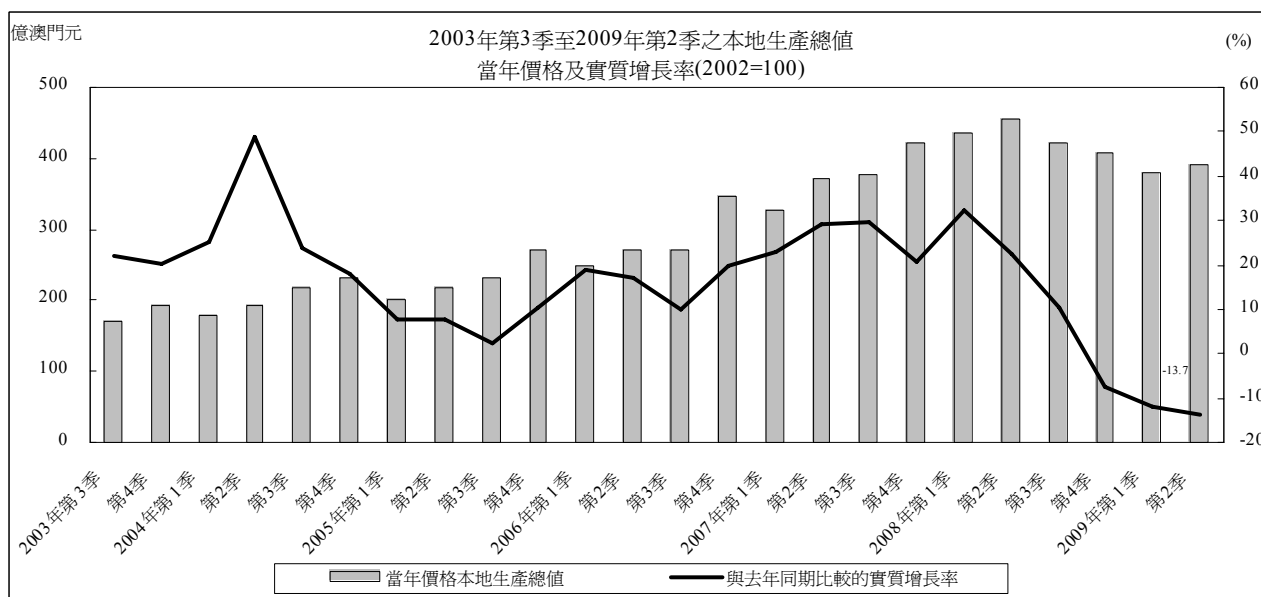


季度本地生產總值

2009年第2季

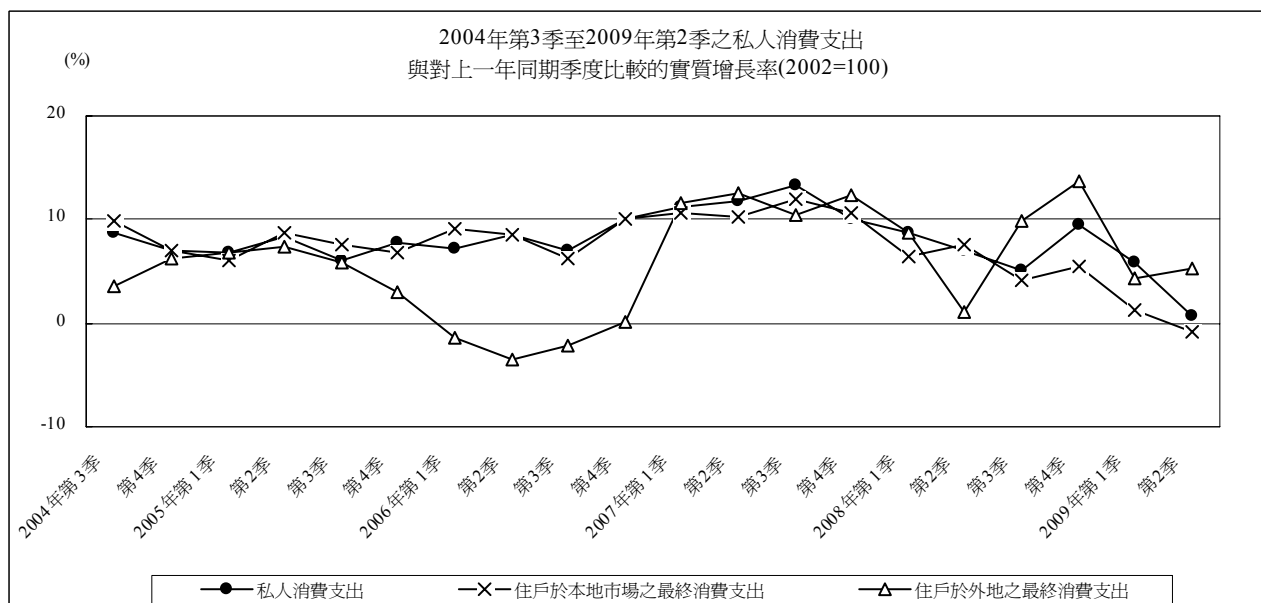
2號刊

今年第2季多項主要經濟指標持續向下，其中博彩毛收入(不計賞錢)較去年同季名義下跌12.2%、旅客總消費(不包括博彩消費)減少20.6%^a、固定資本形成總額收縮27.4%，以及貨物出口大幅下跌58.3%。綜合估計，加上去年第2季的基數為歷年最高，致使今年第2季本地生產總值錄得13.7%的實質負增長，跌幅較第1季(由-12.9%向上修訂為-11.9%)進一步擴大，亦是有編制季度本地生產總值以來最大的跌幅。2009年上半年本澳經濟實質負增長為12.8%。

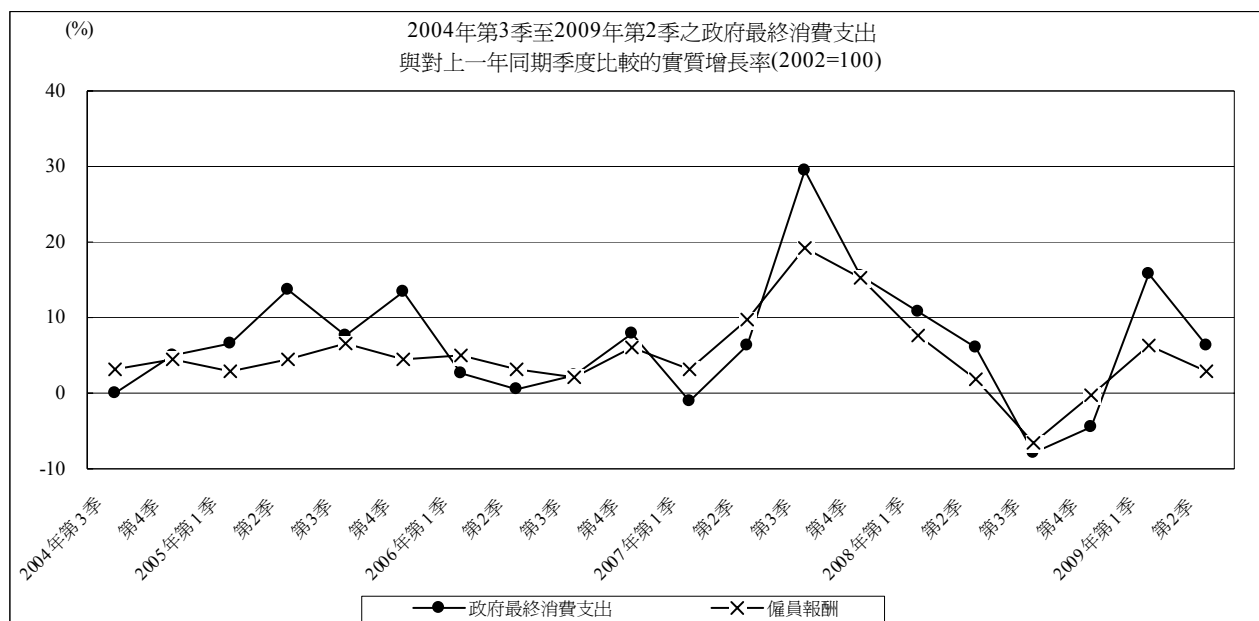


按本地生產總值各主要組成部分分析，第2季私人消費支出上升0.7%，低於第1季的5.8%。住戶在本地市場的最終消費支出減少0.8%，在外地的消費支出則上升5.3%，其中在中國大陸的消費為7.63億澳門元。

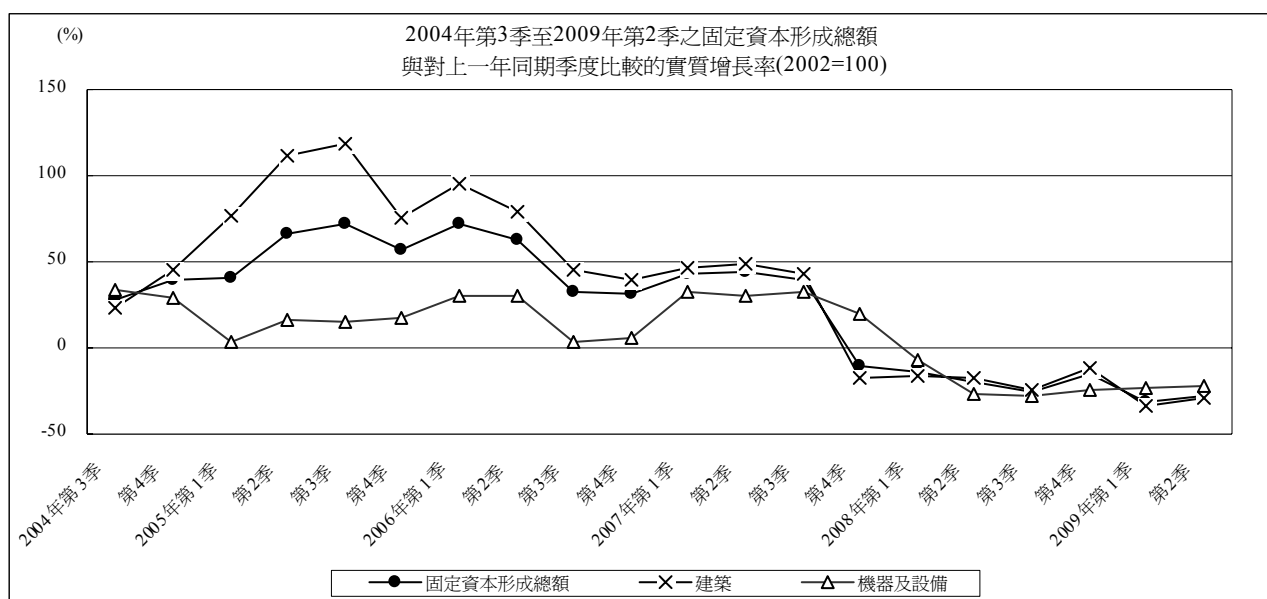
^a 如無特別聲明，本文所提及之變動率均是指與去年同期比較的實質變動率。



政府最終消費支出增加6.2%，低於第1季的15.8%；其中僱員報酬和貨物及服務的購入淨值分別上升3.0%和15.8%。

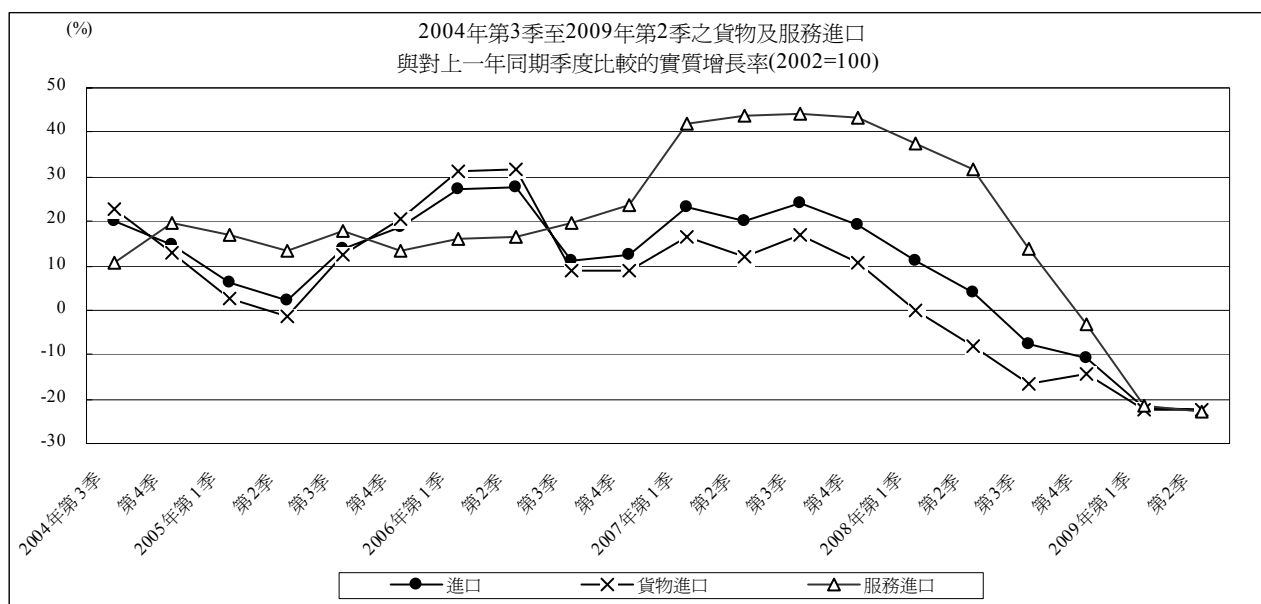
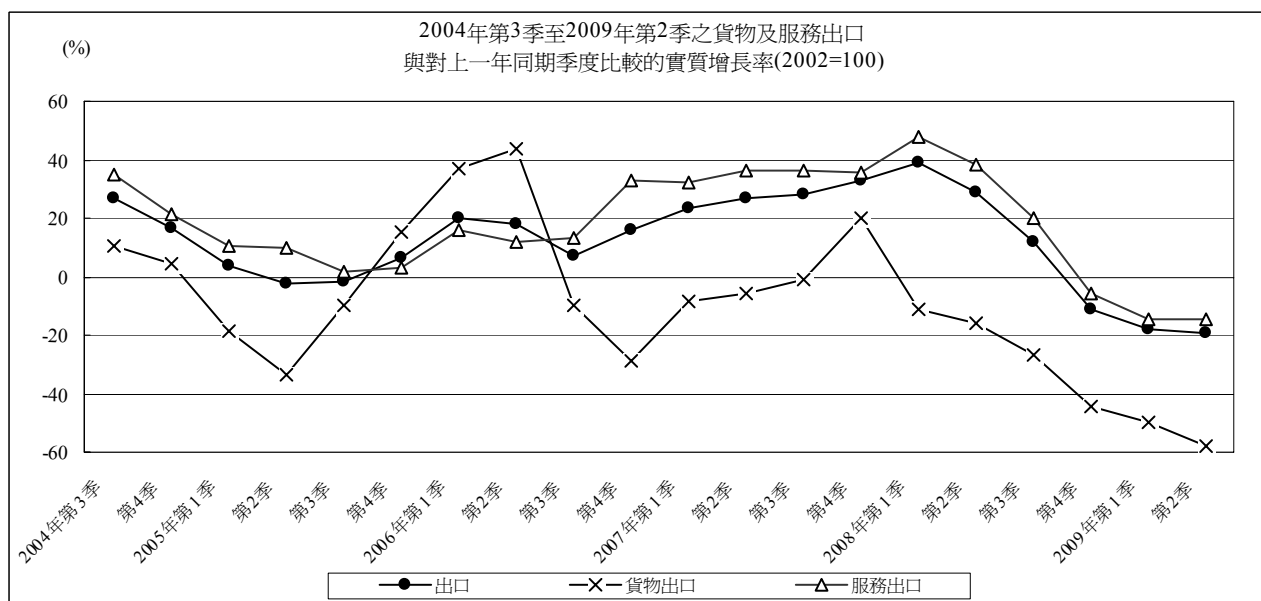


反映投資的固定資本形成總額收縮27.4%，較第1季31.2%的跌幅略為收窄。私人投資因為部分大型工程暫停或減慢興建而下跌30.6%，其中建築及設備投資分別減少32.7%及23.2%。政府投資增加163.5%，其中建築投資大幅上升286.9%，而設備投資則減少3.1%。綜合私人及公共部門的數據，第2季的整體建築投資減少28.7%，減幅小於第1季-34.2%；而整體設備投資的跌幅亦由第1季的23.1%輕微收窄至22.6%。



在有形貿易方面，貨物出口總值跌勢加劇，由第1季名義下跌49.2%持續下滑至第2季的58.3%，實質跌幅亦由49.9%擴大至58.3%。按出口市場分析，出口至美國、歐盟、中國大陸及香港的貨值名義下跌84.1%、57.1%、48.2%及9.4%。貨物進口^b亦顯著減少，名義跌幅為24.4%，較第1季的-22.4%有所擴大；而實質跌幅為22.4%，與第1季持平。在無形貿易（服務出口）方面，博彩服務出口下跌12.7%，旅客總消費(不包括博彩消費)亦錄得20.6%的跌幅，主要是旅客入境及旅客人均消費分別減少13.1%及5.3%所致。綜合主要的服務出口數據，整體無形貿易出口下跌14.6%，與第1季持平；而服務進口的減幅則由第1季21.5%稍微擴大至22.9%。

^b 有關的貨物進口值是經過供給和使用的平衡分析進行調整，故此其增長率與本局的對外商品貿易統計的貨物進口增長率不同。



1. 1999年至2009年之本地生產總值、人均本地生產總值及本地生產總值之平減物價指數

Produto Interno Bruto, Produto Interno Bruto per capita e deflator implícito do Produto Interno Bruto, 1999 - 2009

Gross Domestic Product, per-capita Gross Domestic Product and implicit deflator of Gross Domestic Product, 1999 - 2009

年份	季	本地生產總值， 以當年價格計算	本地生產總值， 以不變(2002年) 價格計算	本地生產總值之 平減物價指數 (2002年=100)	人均本地生產總 值，以當年價格計 算	人均本地生產總值， 以不變(2002年) 價格計算
Ano	Trimestre	Produto Interno Bruto, a preços correntes	Produto Interno Bruto, a preços constantes (2002)	Deflator implícito (ano:2002=100) do Produto Interno Bruto	Produto Interno Bruto per capita , a preços correntes	Produto Interno Bruto per capita , a preços constantes (2002)
Year	Quarter	Gross Domestic Product, at current prices	Gross Domestic Product, at constant (2002) prices	Implicit deflator (year:2002=100) of Gross Domestic Product	Per-capita Gross Domestic Product, at current prices	Per-capita Gross Domestic Product, at constant (2002) prices
		千澳門元 '000 MOP	千澳門元 '000 MOP		澳門元 MOP	澳門元 MOP
1		2	3	4	5	6
1999		47 287 433 (-4.2)	45 756 819 (-2.4)	103.3 (-1.9)	110 637 (-5.3)	107 056 (-3.5)
2000		48 972 396 (3.6)	48 386 399 (5.7)	101.2 (-2.1)	113 739 (2.8)	112 378 (5.0)
2001		49 704 405 (1.5)	49 783 977 (2.9)	99.8 (-1.4)	114 501 (0.7)	114 684 (2.1)
2002		54 818 745 (10.3)	54 818 745 (10.1)	100.0 (0.2)	125 058 (9.2)	125 058 (9.0)
2003		63 566 339 (16.0)	62 583 576 (14.2)	101.6 (1.6)	142 825 (14.2)	140 616 (12.4)
2004		82 233 871 (29.4)	79 681 704 (27.3)	103.2 (1.6)	179 977 (26.0)	174 391 (24.0)
2005		92 191 256 (12.1)	85 193 543 (6.9)	108.2 (4.9)	193 619 (7.6)	178 922 (2.6)
2006		113 708 912 (23.3)	99 244 699 (16.5)	114.6 (5.9)	227 721 (17.6)	198 754 (11.1)
2007		149 456 598 (31.4)	124 321 007 (25.3)	120.2 (4.9)	284 268 (24.8)	236 460 (19.0)
2008		171 867 103 (15.0)	140 748 848 (13.2)	122.1 (1.6)	313 091 (10.1)	256 403 (8.4)
2002	1	12 218 950 (8.2)	12 147 810 (7.7)	100.6 (0.5)
	2	13 188 650 (11.2)	13 146 656 (9.9)	100.3 (1.2)
	3	13 819 848 (6.7)	13 962 679 (7.2)	99.0 (-0.5)
	4	15 591 297 (14.7)	15 561 600 (15.2)	100.2 (-0.5)
2003	1	14 484 623 (18.5)	14 119 042 (16.2)	102.6 (2.0)
	2	12 878 083 (-2.4)	12 740 603 (-3.1)	101.1 (0.8)
	3	16 978 384 (22.9)	17 001 791 (21.8)	99.9 (0.9)
	4	19 225 248 (23.3)	18 722 140 (20.3)	102.7 (2.5)
2004	1	17 938 535 (23.8)	17 649 907 (25.0)	101.6 (-0.9)
	2	19 401 494 (50.7)	18 971 159 (48.9)	102.3 (1.2)
	3	21 648 271 (27.5)	21 005 888 (23.6)	103.1 (3.2)
	4	23 245 570 (20.9)	22 054 750 (17.8)	105.4 (2.6)
2005	1	20 063 318 (11.8)	19 006 143 (7.7)	105.6 (3.9)
	2	21 774 227 (12.2)	20 406 813 (7.6)	106.7 (4.3)
	3	23 285 015 (7.6)	21 480 724 (2.3)	108.4 (5.2)
	4	27 068 695 (16.4)	24 299 863 (10.2)	111.4 (5.7)
2006	1	24 961 900 (24.4)	22 633 415 (19.1)	110.3 (4.5)
	2	27 004 612 (24.0)	23 853 844 (16.9)	113.2 (6.1)
	3	27 113 616 (16.4)	23 630 510 (10.0)	114.7 (5.8)
	4	34 628 783 (27.9)	29 126 930 (19.9)	118.9 (6.7)
2007	1	32 640 037 (30.8)	27 801 179 (22.8)	117.4 (6.5)
	2	37 013 640 (37.1)	30 766 035 (29.0)	120.3 (6.3)
	3	37 638 409 (38.8)	30 667 398 (29.8)	122.7 (7.0)
	4	42 164 512 (21.8)	35 086 395 (20.5)	120.2 (1.1)
2008	1	43 461 797 (33.2)	36 832 078 (32.5)	118.0 (0.5)
	2	45 510 001 (23.0)	37 652 512 (22.4)	120.9 (0.5)
	3	42 228 930 (12.2)	33 855 417 (10.4)	124.7 (1.6)
	4	40 666 375 (-3.6)	32 408 841 (-7.6)	125.5 (4.4)
2009	1 ^r	38 015 418 (-12.5)	32 441 268 (-11.9)	117.2 (-0.7)
	2 [@]	39 016 832 (-14.3)	32 476 070 (-13.7)	120.1 (-0.6)

r: 修訂數字 Dado revisto Revised figures

@: 數字在日後會作出修訂 Dado a ser revisto no futuro Figures are subject to revisions later on

2. 1999年至2009年以當年價格估算之本地生產總值及其主要支出項目

Produto Interno Bruto e principais componentes da despesa a preços correntes, 1999-2009

Gross Domestic Product and main components of expenditure at current prices, 1999-2009

千澳門元
 '000 MOP

年份	季	本地生產總值	私人消費支出	政府最終消費支出	固定資本形成總額	庫存變化	貨物出口	服務出口	貨物進口	服務進口
Ano	Trimestre	Produto Interno Bruto ^a	Despesa de consumo privado	Despesa de consumo final do governo	Formação bruta de capital fixo	Variação de existências	Exportações de bens	Exportações de serviços	Importações de bens	Importações de serviços
Year	Quarter	Gross Domestic Product ^a	Private consumption expenditure	Government final consumption expenditure	Gross fixed capital formation	Changes in inventories	Exports of goods	Exports of services	Imports of goods	Imports of services
1		2	3	4	5	6	7	8	9	10
1999		47 287 433	20 102 405	6 918 804	8 275 070	83 278	17 579 981	23 539 140	22 961 408	6 249 836
2000		48 972 396	19 706 940	6 045 116	5 618 314	73 717	20 380 421	28 799 077	24 392 564	7 258 625
2001		49 704 405	19 797 608	6 108 172	5 118 950	18 762	18 472 950	32 565 397	24 549 842	7 827 592
2002		54 818 745	20 222 476	6 322 928	5 800 686	240 156	18 925 409	38 240 607	25 985 045	8 948 473
2003		63 566 339	20 670 477	6 830 034	8 981 935	318 502	20 700 104	44 991 347	29 164 701	9 761 360
2004		82 233 871	22 777 201	7 200 391	13 422 104	599 415	22 561 083	63 044 485	36 025 685	11 345 123
2005		92 191 256	25 147 842	8 402 377	24 767 947	647 133	19 823 343	67 271 893	40 693 562	13 175 717
2006		113 708 912	28 158 952	8 991 375	39 329 993	1 018 343	20 461 268	81 299 535	49 741 058	15 809 496
2007		149 456 598	33 039 987	10 959 229	54 186 888	933 139	20 430 570	111 570 384	58 600 087	23 063 512
2008		171 867 103	38 976 366	12 173 731	49 474 436	867 013	16 025 403	139 377 657	56 900 311	28 127 193
2002	1	12 218 950	5 071 278	1 110 323	1 306 224	47 843	3 563 344	8 734 180	5 586 302	2 027 941
	2	13 188 650	4 939 437	1 583 111	1 345 032	62 746	4 917 642	9 144 805	6 650 528	2 153 596
	3	13 819 848	5 225 787	1 479 284	1 271 956	66 986	5 478 065	9 521 810	6 904 133	2 319 907
	4	15 591 297	4 985 974	2 150 209	1 877 474	62 580	4 966 358	10 839 812	6 844 082	2 447 030
2003	1	14 484 623	5 172 802	1 276 165	1 509 134	63 131	4 053 280	11 111 934	6 291 560	2 410 262
	2	12 878 083	4 873 781	1 747 718	1 756 532	81 373	5 363 771	7 793 554	6 567 709	2 170 936
	3	16 978 384	5 406 278	1 492 967	2 387 380	88 075	5 865 683	12 346 809	8 025 467	2 583 340
	4	19 225 248	5 217 616	2 313 184	3 328 890	85 923	5 417 370	13 739 051	8 279 965	2 596 821
2004	1	17 938 535	5 468 134	1 360 559	2 320 626	118 466	4 267 873	14 442 489	7 563 303	2 476 309
	2	19 401 494	5 571 561	1 882 151	2 590 232	152 428	5 848 739	14 922 756	8 741 857	2 824 514
	3	21 648 271	6 005 973	1 511 120	3 343 226	171 147	6 725 244	16 852 773	10 050 719	2 910 493
	4	23 245 570	5 731 533	2 446 561	5 168 020	157 373	5 719 227	16 826 468	9 669 806	3 133 807
2005	1	20 063 318	6 003 990	1 533 893	3 664 818	118 996	3 498 833	16 085 155	7 928 685	2 913 680
	2	21 774 227	6 191 012	2 241 971	5 001 947	139 916	3 886 763	16 444 474	8 922 408	3 209 448
	3	23 285 015	6 582 204	1 717 024	6 738 169	190 239	5 976 347	17 243 573	11 698 556	3 463 985
	4	27 068 695	6 370 636	2 909 490	9 363 013	197 983	6 461 400	17 498 691	12 143 912	3 588 605
2006	1	24 961 900	6 643 716	1 597 147	6 976 993	225 159	4 776 231	18 930 830	10 776 637	3 411 538
	2	27 004 612	6 995 111	2 330 169	9 006 092	273 355	5 571 827	18 846 033	12 251 178	3 766 795
	3	27 113 616	7 301 260	1 804 673	9 794 511	269 061	5 497 460	19 894 244	13 288 320	4 159 274
	4	34 628 783	7 218 865	3 259 386	13 552 397	250 768	4 615 750	23 628 429	13 424 923	4 471 889
2007	1	32 640 037	7 652 251	1 687 603	10 992 373	196 359	4 313 926	25 418 960	12 727 969	4 893 467
	2	37 013 640	8 115 610	2 617 811	14 313 454	233 939	5 236 893	26 019 968	14 024 533	5 499 503
	3	37 638 409	8 759 955	2 543 146	15 287 321	249 782	5 430 233	27 552 647	16 072 571	6 112 103
	4	42 164 512	8 512 172	4 110 668	13 593 740	253 059	5 449 518	32 578 808	15 775 014	6 558 440
2008	1	43 461 797	9 103 911	2 099 402	11 017 394	213 246	4 000 359	38 070 794	14 124 406	6 918 903
	2	45 510 001	9 630 763	3 142 261	13 340 935	227 988	4 519 366	36 447 830	14 335 222	7 463 922
	3	42 228 930	10 157 441	2 590 147	12 965 370	228 619	4 364 841	33 636 951	14 519 322	7 195 116
	4	40 666 375	10 084 251	4 341 921	12 150 737	197 160	3 140 837	31 222 082	13 921 361	6 549 252
2009	1 ^f	38 015 418	10 157 898	2 475 047	7 022 417	150 683	2 031 135	32 690 672	10 953 566	5 558 867
	2 ^g	39 016 832	10 003 561	3 406 365	8 978 957	154 905	1 883 034	31 234 804	10 834 060	5 810 735

a 本地生產總值 / PIB / GDP = 3 + 4 + 5 + 6 + 7 + 8 - 9 - 10

3. 1999年至2009年以當年價格估算之本地生產總值及其主要支出項目的名義變動率

Taxas de variação homóloga do Produto Interno Bruto e principais componentes da despesa a preços correntes, 1999-2009

Year-on-year growth rates of Gross Domestic Product and main components of expenditure at current prices, 1999-2009

		%								
年份	季	本地生產總值	私人消費支出	政府最終消費支出	固定資本形成總額	庫存變化	貨物出口	服務出口	貨物進口	服務進口
Ano	Trimestre	Produto Interno Bruto	Despesa de consumo privado	Despesa de consumo final do governo	Formação bruta de capital fixo	Variação de existências	Exportações de bens	Exportações de serviços	Importações de bens	Importações de serviços
Year	Quarter	Gross Domestic Product	Private consumption expenditure	Government final consumption expenditure	Gross fixed capital formation	Changes in inventories	Exports of goods	Exports of services	Imports of goods	Imports of services
1		2	3	4	5	6	7	8	9	10
1999		- 4.2	- 0.6	11.9	- 6.3	..	2.9	- 4.6	4.8	10.6
2000		3.6	- 2.0	- 12.6	- 32.1	- 11.5	15.9	22.3	6.2	16.1
2001		1.5	0.5	1.0	- 8.9	- 74.5	- 9.4	13.1	0.6	7.8
2002		10.3	2.1	3.5	13.3	1 180.0	2.4	17.4	5.8	14.3
2003		16.0	2.2	8.0	54.8	32.6	9.4	17.7	12.2	9.1
2004		29.4	10.2	5.4	49.4	88.2	9.0	40.1	23.5	16.2
2005		12.1	10.4	16.7	84.5	8.0	- 12.1	6.7	13.0	16.1
2006		23.3	12.0	7.0	58.8	57.4	3.2	20.9	22.2	20.0
2007		31.4	17.3	21.9	37.8	- 8.4	- 0.2	37.2	17.8	45.9
2008		15.0	18.0	11.1	- 8.7	- 7.1	- 21.6	24.9	- 2.9	22.0
2002	1	8.2	1.1	5.0	4.6	1 112.7	- 2.1	11.5	- 1.6	11.1
	2	11.2	1.7	- 2.8	16.0	1 134.7	0.8	21.6	6.3	11.2
	3	6.7	2.6	7.0	14.2	1 213.3	3.2	11.6	7.1	14.2
	4	14.7	3.2	5.5	17.6	1 250.3	6.8	24.8	10.8	20.3
2003	1	18.5	2.0	14.9	15.5	32.0	13.7	27.2	12.6	18.9
	2	- 2.4	- 1.3	10.4	30.6	29.7	9.1	- 14.8	- 1.2	0.8
	3	22.9	3.5	0.9	87.7	31.5	7.1	29.7	16.2	11.4
	4	23.3	4.6	7.6	77.3	37.3	9.1	26.7	21.0	6.1
2004	1	23.8	5.7	6.6	53.8	87.7	5.3	30.0	20.2	2.7
	2	50.7	14.3	7.7	47.5	87.3	9.0	91.5	33.1	30.1
	3	27.5	11.1	1.2	40.0	94.3	14.7	36.5	25.2	12.7
	4	20.9	9.8	5.8	55.2	83.2	5.6	22.5	16.8	20.7
2005	1	11.8	9.8	12.7	57.9	0.4	- 18.0	11.4	4.8	17.7
	2	12.2	11.1	19.1	93.1	- 8.2	- 33.5	10.2	2.1	13.6
	3	7.6	9.6	13.6	101.5	11.2	- 11.1	2.3	16.4	19.0
	4	16.4	11.2	18.9	81.2	25.8	13.0	4.0	25.6	14.5
2006	1	24.4	10.7	4.1	90.4	89.2	36.5	17.7	35.9	17.1
	2	24.0	13.0	3.9	80.1	95.4	43.4	14.6	37.3	17.4
	3	16.4	10.9	5.1	45.4	41.4	- 8.0	15.4	13.6	20.1
	4	27.9	13.3	12.0	44.7	26.7	- 28.6	35.0	10.5	24.6
2007	1	30.8	15.2	5.7	57.6	- 12.8	- 9.7	34.3	18.1	43.4
	2	37.1	16.0	12.3	58.9	- 14.4	- 6.0	38.1	14.5	46.0
	3	38.8	20.0	40.9	56.1	- 7.2	- 1.2	38.5	21.0	47.0
	4	21.8	17.9	26.1	0.3	0.9	18.1	37.9	17.5	46.7
2008	1	33.2	19.0	24.4	0.2	8.6	- 7.3	49.8	11.0	41.4
	2	23.0	18.7	20.0	- 6.8	- 2.5	- 13.7	40.1	2.2	35.7
	3	12.2	16.0	1.8	- 15.2	- 8.5	- 19.6	22.1	- 9.7	17.7
	4	- 3.6	18.5	5.6	- 10.6	- 22.1	- 42.4	- 4.2	- 11.8	- 0.1
2009	1 ^r	- 12.5	11.6	17.9	- 36.3	- 29.3	- 49.2	- 14.1	- 22.4	- 19.7
	2 [@]	- 14.3	3.9	8.4	- 32.7	- 32.1	- 58.3	- 14.3	- 24.4	- 22.1

4. 1999年至2009年以不變（2002年）價格估算之本地生產總值及其主要支出項目

Produto Interno Bruto e principais componentes da despesa a preços constantes (2002), 1999-2009

Gross Domestic Product and main components of expenditure at constant (2002) prices, 1999-2009

千澳門元
'000 MOP

年份	季	本地生產總值	私人消費支出	政府最終消費支出	固定資本形成總額	庫存變化	貨物出口	服務出口	貨物進口	服務進口
Ano	Trimestre	Produto Interno Bruto	Despesa de consumo privado	Despesa de consumo final do governo	Formação bruta de capital fixo	Variação de existências	Exportações de bens	Exportações de serviços	Importações de bens	Importações de serviços
Year	Quarter	Gross Domestic Product	Private consumption expenditure	Government final consumption expenditure	Gross fixed capital formation	Changes in inventories	Exports of goods	Exports of services	Imports of goods	Imports of services
1		2	3	4	5	6	7	8	9	10
1999		45 756 819	19 181 713	7 082 229	7 883 604	81 426	16 689 573	23 413 389	22 559 444	6 015 670
2000		48 386 399	18 996 874	6 159 955	5 505 331	68 298	19 034 799	28 718 795	22 973 910	7 123 743
2001		49 783 977	19 351 375	6 166 151	5 301 510	17 933	17 936 446	32 512 311	23 763 600	7 738 147
2002		54 818 745	20 222 476	6 322 928	5 800 686	240 156	18 925 409	38 240 607	25 985 045	8 948 473
2003		62 583 576	20 949 873	6 755 793	8 449 795	324 007	20 696 608	44 780 990	29 445 278	9 928 212
2004		79 681 704	22 786 057	7 044 005	11 587 039	589 229	22 422 708	62 161 465	35 468 127	11 440 672
2005		85 193 543	24 432 241	7 818 414	18 502 940	593 192	19 837 414	65 917 360	38 706 182	13 201 835
2006		99 244 699	26 434 560	8 115 990	26 729 485	874 248	20 402 769	78 223 106	45 801 247	15 734 212
2007		124 321 007	29 507 104	9 165 109	33 357 593	768 300	20 498 565	105 790 168	52 211 663	22 554 169
2008		140 748 848	31 729 755	9 145 172	27 111 726	643 043	15 290 687	130 434 159	46 895 737	26 709 958
2002	1	12 147 810	5 033 828	1 115 655	1 321 385	47 520	3 405 422	8 719 508	5 480 716	2 014 792
	2	13 146 656	4 943 735	1 584 953	1 358 315	63 647	4 989 931	9 143 130	6 786 103	2 150 952
	3	13 962 679	5 235 407	1 475 577	1 267 192	67 258	5 644 203	9 535 028	6 947 136	2 314 850
	4	15 561 600	5 009 505	2 146 744	1 853 794	61 732	4 885 853	10 842 942	6 771 090	2 467 880
2003	1	14 119 042	5 218 974	1 267 258	1 417 663	63 849	3 817 954	11 057 915	6 297 920	2 426 651
	2	12 740 603	4 933 563	1 730 899	1 673 097	83 300	5 480 248	7 810 952	6 754 243	2 217 212
	3	17 001 791	5 501 595	1 475 208	2 279 602	88 933	6 032 358	12 311 839	8 051 642	2 636 101
	4	18 722 140	5 295 742	2 282 428	3 079 433	87 925	5 366 048	13 600 284	8 341 472	2 648 247
2004	1	17 649 907	5 526 421	1 330 077	2 054 882	117 605	4 327 752	14 279 628	7 476 482	2 509 977
	2	18 971 159	5 603 814	1 843 705	2 304 306	150 025	5 837 634	14 741 022	8 662 961	2 846 385
	3	21 005 888	5 984 067	1 474 631	2 914 629	168 924	6 655 740	16 622 350	9 895 947	2 918 507
	4	22 054 750	5 671 754	2 395 592	4 313 223	152 676	5 601 582	16 518 465	9 432 738	3 165 804
2005	1	19 006 143	5 905 297	1 419 417	2 886 319	114 205	3 514 029	15 767 578	7 661 750	2 938 953
	2	20 406 813	6 072 436	2 096 095	3 830 854	129 996	3 876 253	16 188 520	8 561 593	3 225 747
	3	21 480 724	6 344 687	1 587 446	5 008 130	174 052	5 995 104	16 928 832	11 112 770	3 444 758
	4	24 299 863	6 109 820	2 715 456	6 777 637	174 939	6 452 029	17 032 430	11 370 069	3 592 378
2006	1	22 633 415	6 329 953	1 457 437	4 978 698	198 652	4 815 328	18 314 770	10 047 955	3 413 469
	2	23 853 844	6 587 088	2 105 931	6 231 841	234 653	5 575 782	18 149 948	11 267 077	3 764 323
	3	23 630 510	6 794 027	1 625 317	6 627 069	222 025	5 426 631	19 138 950	12 091 401	4 112 108
	4	29 126 930	6 723 491	2 927 305	8 891 877	218 918	4 585 027	22 619 437	12 394 814	4 444 312
2007	1	27 801 179	7 038 199	1 441 453	7 115 423	171 365	4 399 145	24 186 949	11 708 410	4 842 945
	2	30 766 035	7 360 333	2 237 874	8 988 651	194 385	5 255 217	24 789 055	12 642 352	5 417 127
	3	30 667 398	7 703 630	2 106 035	9 286 479	199 247	5 358 128	26 112 622	14 163 873	5 934 870
	4	35 086 395	7 404 942	3 379 747	7 967 040	203 304	5 486 076	30 701 542	13 697 028	6 359 227
2008	1	36 832 078	7 658 269	1 598 405	6 129 386	162 779	3 899 782	35 747 773	11 711 616	6 652 700
	2	37 652 512	7 876 189	2 374 203	7 246 478	162 551	4 414 378	34 333 915	11 624 603	7 130 600
	3	33 855 417	8 094 197	1 942 035	6 968 560	163 780	3 935 486	31 344 758	11 825 989	6 767 411
	4	32 408 841	8 101 100	3 230 529	6 767 301	153 933	3 041 041	29 007 713	11 733 529	6 159 247
2009	1 ^r	32 441 268	8 099 941	1 850 231	4 217 016	120 752	1 955 614	30 510 791	9 091 463	5 221 614
	2 ^o	32 476 070	7 928 466	2 520 477	5 262 608	121 094	1 842 866	29 320 516	9 024 354	5 495 604

5. 1999年至2009年以不變(2002年)價格估算之本地生產總值及其主要支出項目的實質增長率

Taxas de variação homóloga do Produto Interno Bruto e principais componentes da despesa a preços constantes (2002), 1999-2009

Year-on-year growth rates of Gross Domestic Product and main components of expenditure at constant (2002) prices, 1999-2009

		%								
年份	季	本地生產總值	私人消費支出	政府最終消費支出	固定資本形成總額	庫存變化	貨物出口	服務出口	貨物進口	服務進口
Ano	Trimestre	Produto Interno Bruto	Despesa de consumo privado	Despesa de consumo final do governo	Formação bruta de capital fixo	Varição de existências	Exportações de bens	Exportações de serviços	Importações de bens	Importações de serviços
Year	Quarter	Gross Domestic Product	Private consumption expenditure	Government final consumption expenditure	Gross fixed capital formation	Changes in inventories	Exports of goods	Exports of services	Imports of goods	Imports of services
1		2	3	4	5	6	7	8	9	10
1999		- 2.4	2.5	13.0	1.8	..	3.6	- 3.6	7.6	15.6
2000		5.7	- 1.0	- 13.0	- 30.2	- 16.1	14.1	22.7	1.8	18.4
2001		2.9	1.9	0.1	- 3.7	- 73.7	- 5.8	13.2	3.4	8.6
2002		10.1	4.5	2.5	9.4	1 239.2	5.5	17.6	9.3	15.6
2003		14.2	3.6	6.8	45.7	34.9	9.4	17.1	13.3	10.9
2004		27.3	8.8	4.3	37.1	81.9	8.3	38.8	20.5	15.2
2005		6.9	7.2	11.0	59.7	0.7	- 11.5	6.0	9.1	15.4
2006		16.5	8.2	3.8	44.5	47.4	2.8	18.7	18.3	19.2
2007		25.3	11.6	12.9	24.8	- 12.1	0.5	35.2	14.0	43.3
2008		13.2	7.5	- 0.2	- 18.7	- 16.3	- 25.4	23.3	- 10.2	18.4
2002	1	7.7	3.3	2.9	2.1	1 198.0	0.8	11.6	2.3	11.8
	2	9.9	4.6	- 3.8	15.2	1 228.6	4.2	21.8	13.5	12.5
	3	7.2	5.1	6.1	7.2	1 268.4	7.8	12.0	10.7	15.5
	4	15.2	5.0	5.0	12.6	1 251.9	7.8	24.9	10.0	22.2
2003	1	16.2	3.7	13.6	7.3	34.4	12.1	26.8	14.9	20.4
	2	- 3.1	- 0.2	9.2	23.2	30.9	9.8	- 14.6	- 0.5	3.1
	3	21.8	5.1	0 [#]	79.9	32.2	6.9	29.1	15.9	13.9
	4	20.3	5.7	6.3	66.1	42.4	9.8	25.4	23.2	7.3
2004	1	25.0	5.9	5.0	44.9	84.2	13.4	29.1	18.7	3.4
	2	48.9	13.6	6.5	37.7	80.1	6.5	88.7	28.3	28.4
	3	23.6	8.8	0 [#]	27.9	89.9	10.3	35.0	22.9	10.7
	4	17.8	7.1	5.0	40.1	73.6	4.4	21.5	13.1	19.5
2005	1	7.7	6.9	6.7	40.5	- 2.9	- 18.8	10.4	2.5	17.1
	2	7.6	8.4	13.7	66.2	- 13.4	- 33.6	9.8	- 1.2	13.3
	3	2.3	6.0	7.7	71.8	3.0	- 9.9	1.8	12.3	18.0
	4	10.2	7.7	13.4	57.1	14.6	15.2	3.1	20.5	13.5
2006	1	19.1	7.2	2.7	72.5	73.9	37.0	16.2	31.1	16.1
	2	16.9	8.5	0.5	62.7	80.5	43.8	12.1	31.6	16.7
	3	10.0	7.1	2.4	32.3	27.6	- 9.5	13.1	8.8	19.4
	4	19.9	10.0	7.8	31.2	25.1	- 28.9	32.8	9.0	23.7
2007	1	22.8	11.2	- 1.1	42.9	- 13.7	- 8.6	32.1	16.5	41.9
	2	29.0	11.7	6.3	44.2	- 17.2	- 5.7	36.6	12.2	43.9
	3	29.8	13.4	29.6	40.1	- 10.3	- 1.3	36.4	17.1	44.3
	4	20.5	10.1	15.5	- 10.4	- 7.1	19.7	35.7	10.5	43.1
2008	1	32.5	8.8	10.9	- 13.9	- 5.0	- 11.4	47.8	0 [#]	37.4
	2	22.4	7.0	6.1	- 19.4	- 16.4	- 16.0	38.5	- 8.1	31.6
	3	10.4	5.1	- 7.8	- 25.0	- 17.8	- 26.6	20.0	- 16.5	14.0
	4	- 7.6	9.4	- 4.4	- 15.1	- 24.3	- 44.6	- 5.5	- 14.3	- 3.1
2009	1 ^r	- 11.9	5.8	15.8	- 31.2	- 25.8	- 49.9	- 14.6	- 22.4	- 21.5
	2 [@]	- 13.7	0.7	6.2	- 27.4	- 25.5	- 58.3	- 14.6	- 22.4	- 22.9

以下統計表可在本局網頁下載

Os quadros abaixo indicados podem ser consultados na homepage da DSEC
The following statistical tables can be downloaded from our website

6. 1999 年至 2009 年本地生產總值及其主要支出項目之名義結構
Estrutura nominal do Produto Interno Bruto e das principais componentes da despesa, 1999 - 2009
Nominal structure of Gross Domestic Product and main components of expenditure, 1999 - 2009
7. 1999 年至 2009 年本地生產總值及其主要支出項目之實質結構(2002 年=100)
Estrutura real (ano: 2002=100) do Produto Interno Bruto e das principais componentes da despesa, 1999 - 2009
Real structure (year: 2002=100) of Gross Domestic Product and main components of expenditure, 1999 -2009
8. 1999 年至 2009 年以當年價格估算之私人消費支出
Despesa de consumo privado a preços correntes, 1999 - 2009
Private consumption expenditure at current prices, 1999 - 2009
9. 1999 年至 2009 年以當年價格估算之私人消費支出的名義變動率
Taxas de variação homóloga de despesa de consumo privado a preços correntes, 1999 -2009
Year-on-year growth rates of private consumption expenditure at current prices, 1999 -2009
10. 1999 年至 2009 年以不變(2002 年)價格估算之私人消費支出
Despesa de consumo privado a preços constantes (2002), 1999 - 2009
Private consumption expenditure at constant (2002) prices, 1999 - 2009
11. 1999 年至 2009 年以不變(2002 年)價格估算之私人消費支出的實質變動率
Taxas de variação homóloga de despesa de consumo privado a preços constantes (2002), 1999 - 2009
Year-on-year growth rates of private consumption expenditure at constant (2002) prices, 1999 - 2009
12. 1999 年至 2009 年以當年價格估算之政府最終消費支出
Despesa de consumo final do governo a preço correntes, 1999 - 2009
Government final consumption expenditure at current prices, 1999 - 2009

-
13. 1999 年至 2009 年以當年價格估算之政府最終消費支出的名義變動率
Taxas de variação homóloga de despesa de consumo final do governo a preço correntes, 1999 - 2009
Year-on-year growth rates of government final consumption expenditure at current prices, 1999 - 2009
 14. 1999 年至 2009 年以不變(2002 年)價格估算之政府最終消費支出
Despesa de consumo final do governo a preço constantes (2002), 1999 - 2009
Government final consumption expenditure at constant (2002) prices, 1999 - 2009
 15. 1999 年至 2009 年以不變(2002 年)價格估算之政府最終消費支出的實質變動率
Taxas de variação homóloga de despesa de consumo final do governo a preço constantes (2002), 1999 - 2009
Year-on-year growth rates of government final consumption expenditure at constant (2002) prices, 1999-2009
 16. 1999 年至 2009 年以當年價格估算之固定資本形成總額
Formação bruta de capita fixo a preços correntes, 1999 - 2009
Gross fixed capital formation at current prices, 1999 - 2009
 17. 1999 年至 2009 年以當年價格估算之固定資本形成總額的名義變動率
Taxas de variação homóloga de formação bruta de capita fixo a preços correntes, 1999 - 2009
Year-on-year growth rates of gross fixed capital formation at current prices, 1999 - 2009
 18. 1999 年至 2009 年以不變(2002 年)價格估算之固定資本形成總額
Formação bruta de capita fixo a preços constantes (2002), 1999 - 2009
Gross fixed capital formation at constant (2002) prices, 1999 - 2009
 19. 1999 年至 2009 年以不變(2002 年)價格估算之固定資本形成總額的實質變動率
Taxas de variação homóloga de formação bruta de capita fixo a preços constantes (2002), 1999 - 2009
Year-on-year growth rates of gross fixed capital formation at constant (2002) prices, 1999 - 2009
 20. 1999 年至 2009 年以當年價格估算之出口
Exportações a preços correntes, 1999 - 2009
Exports at current prices, 1999 - 2009
 21. 1999 年至 2009 年以當年價格估算之出口的名義變動率
Taxas de variação homóloga de exportações a preços correntes, 1999 - 2009
Year-on-year growth rates of exports at current prices, 1999 - 2009

-
22. 1999 年至 2009 年以不變(2002 年)價格估算之出口
Exportações a preços constantes (2002), 1999 - 2009
Exports at constant (2002) prices, 1999 - 2009
23. 1999 年至 2009 年以不變(2002 年)價格估算之出口的實質變動率
Taxas de variação homóloga de exportações a preços constantes (2002), 1999 - 2009
Year-on-year growth rates of exports at constant (2002) prices, 1999 - 2009
24. 1999 年至 2009 年以當年價格估算之進口
Importações a preços correntes, 1999 - 2009
Imports at current prices, 1999 - 2009
25. 1999 年至 2009 年以當年價格估算之進口的名義增長率
Taxas de variação homóloga de importações a preços correntes, 1999 - 2009
Year-on-year growth rates of imports at current prices, 1999 - 2009
26. 1999 年至 2009 年以不變(2002 年)價格估算之進口
Importações a preços constantes (2002), 1999 - 2009
Imports at constant (2002) prices, 1999 - 2009
27. 1999 年至 2009 年以不變(2002 年)價格估算之進口的實質增長率
Taxas de variação homóloga de importações a preços constantes (2002), 1999 - 2009
Year-on-year growth rates of imports at constant (2002) prices, 1999 - 2009

統計服務全為您

A Estatística ao Serviço da Comunidade
Statistics Are Here To Serve You