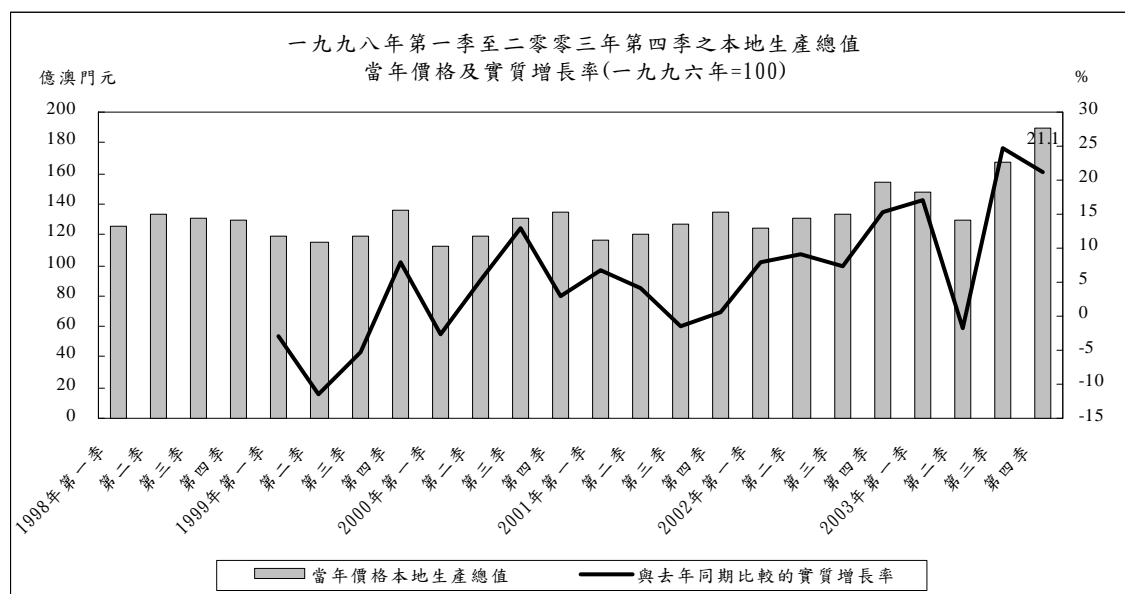


季度本地生產總值

二零零三年第四季

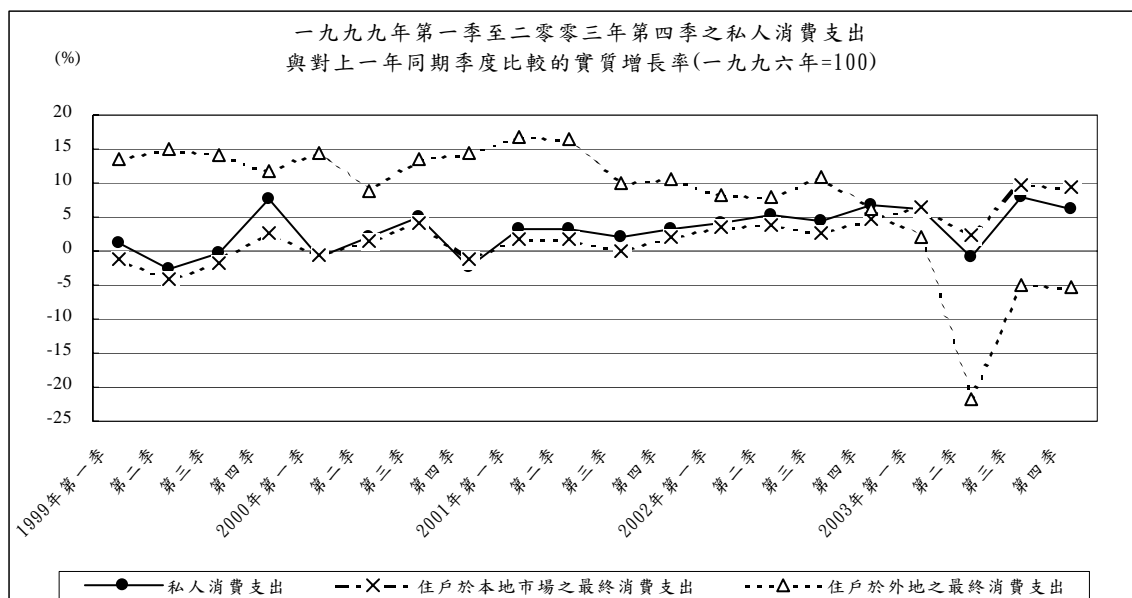
四號刊

承接二零零三年第三季的升勢，在博彩旅遊業的推動下，第四季澳門經濟持續向好，本地生產總值錄得 21.1%^a 的實質升幅。其中博彩總收益的名義增長上升三成七，旅客消費(不包括博彩消費)亦由於旅客數目及人均消費增加而上升超過一成。另一方面，政府及私人建築投資大幅上升 66.8%；貨物出口升幅亦增加至 9.8%。此外，根據最新的資料估算，二零零三年第一季、第二季及第三季本地生產總值均作出了修訂，分別錄得 17.1% 的增幅、1.7% 的跌幅及 24.7% 的增幅。

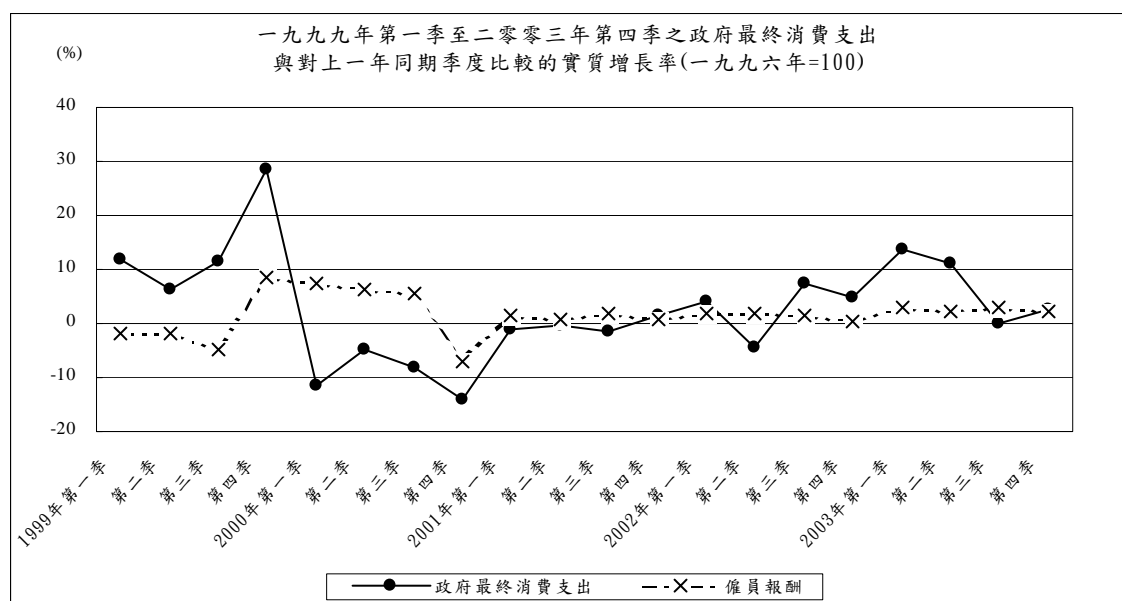


按本地生產總值各個主要組成部份分析，二零零三年第四季私人消費支出上升6.2%。其中住戶在本地市場的最終消費支出上升9.5%，在外地的消費則下跌5.3%。

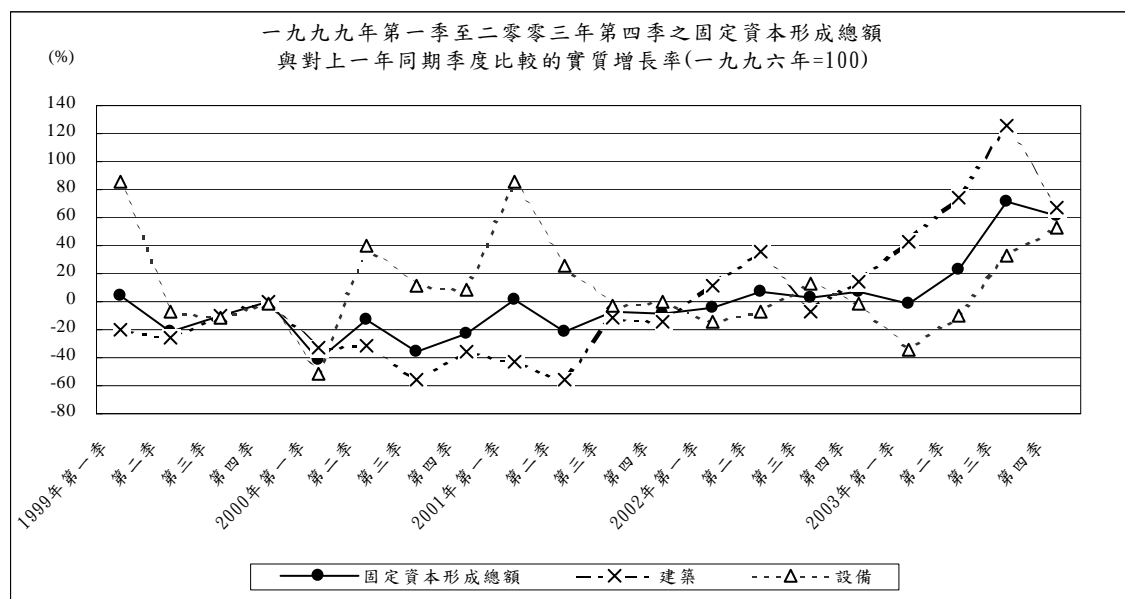
^a 如無特別聲明，本分析所提及之變動率均是指與去年同期比較的實質變動率。



政府最終消費由第三季的零增長上升至第四季的2.5%，其中僱員報酬上升2.2%，貨物及服務的淨購入亦上升3.3%。

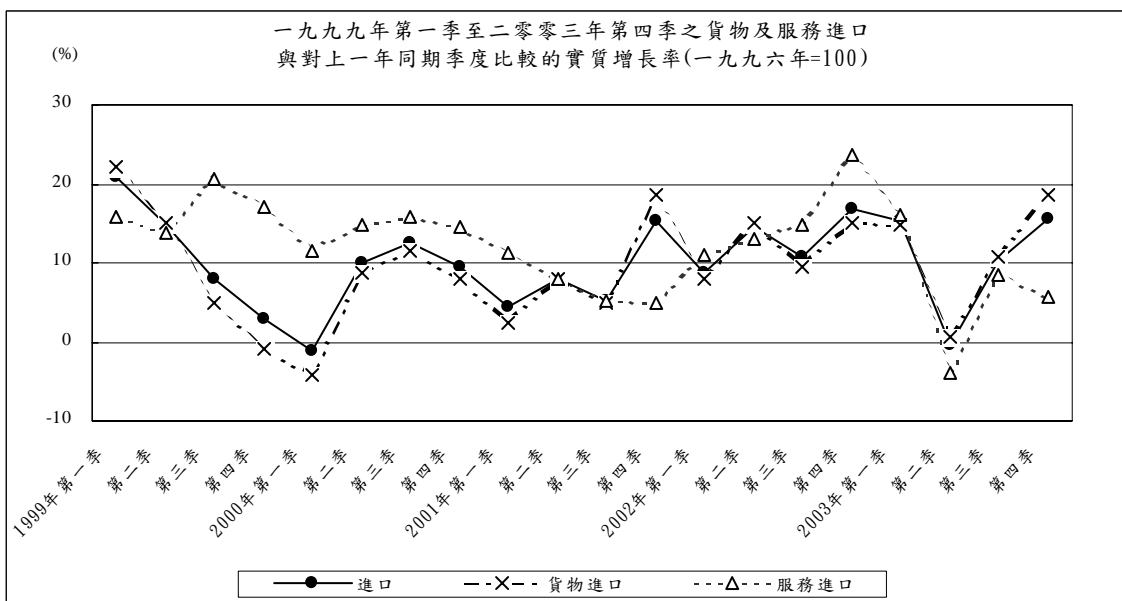
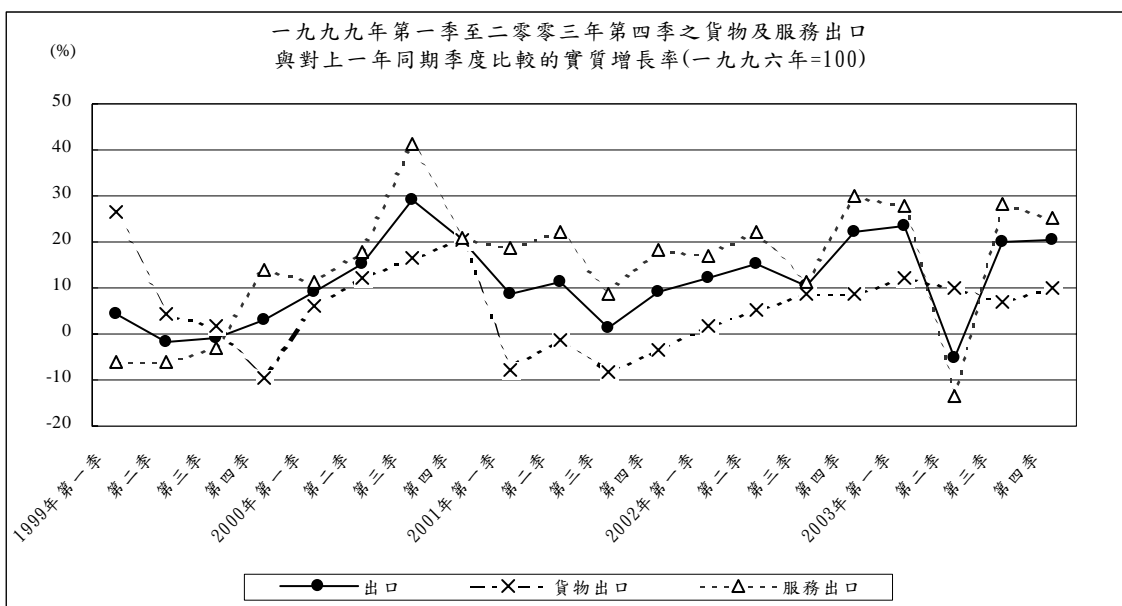


反映投資的固定資本形成總額上升61.3%，但低於第三季的71.4%。其中私人部門的投資錄得90.7%的升幅，主要原因是建築投資上升105.8%引致，而設備投資亦上升77.2%。至於政府部門的投資上升32.0%，其中建築投資上升40.7%，而設備方面則上升11.1%。綜合私人及政府部門的數據分析，第四季的整體建築投資上升66.8%，低於第三季的126.2%；設備投資則上升53.3%，高於第三季的33.1%。



有形貿易方面，貨物出口總額錄得9.1%的名義升幅及9.8%的實質升幅，均高於第三季的升幅。其中出口美國及歐盟錄得的名義升幅分別為10.5%及10.8%。至於貨物進口^b亦因需求增加而上升，名義升幅及實質升幅分別為16.5%及18.5%，均高於第三季的升幅。無形貿易（服務出口）方面，博彩服務出口的名義升幅及實質升幅高達37.1%及39.1%；旅客消費(不包括博彩消費)亦因旅客入境人數及人均消費增加而錄得15.3%的名義升幅及10.9%的實質升幅；但包括運輸服務的非工業服務出口則錄得12.4%的跌幅。綜合主要的服務出口數據分析，整體無形貿易出口的增幅為25.4%，略低於第三季的28.4%。另一方面，服務進口則上升5.8%。

^b 有關的貨物進口值是經過供給和使用的平衡分析進行調整，故此其增長率與本局的對外貿易統計的貨物進口增長率不同。



表一： 一九九三年至二零零三年之本地生產總值、人均本地生產總值及本地生產總值之平減物價指數
 QUADRO 1: PRODUTO INTERNO BRUTO, PRODUTO INTERNO BRUTO PER CAPITA E DEFLATOR IMPLÍCITO DO
 PRODUTO INTERNO BRUTO, 1993 - 2003
 TABLE 1: GROSS DOMESTIC PRODUCT, PER-CAPITA GROSS DOMESTIC PRODUCT AND IMPLICIT DEFLATOR OF
 GROSS DOMESTIC PRODUCT, 1993 - 2003

年份	季	本地生產總值， 以當年價格計算	本地生產總值， 以不變(一九九六) 價格計算	本地生產總值之 平減物價指數 (1996=100)	人均本地生產總值， 以當年價格計算	人均本地生產總值， 以不變(一九九六) 價格計算
		Produto interno bruto, a preços correntes	Produto interno bruto, a preços constantes (1996)	Deflator implícito (1996=100) do produto interno bruto	Produto interno bruto per capita, a preços correntes	Produto interno bruto per capita, a preços constantes (1996)
Year	Quarter	Gross domestic product, at current prices	Gross domestic product, at constant (1996) prices	Implicit deflator (1996=100) of gross domestic product	Per-capita gross domestic product, at current prices	Per-capita gross domestic product, at constant (1996) prices
		千澳門元 1000 MOP	千澳門元 1000 MOP		澳門元 MOP	澳門元 MOP
1		2	3	4	5	6
1993		45 193 020 (14.4)	51 561 604 (5.2)	87.6 (8.7)	117 695 (10.5)	134 281 (1.6)
1994		50 114 040 (10.9)	53 754 568 (4.3)	93.2 (6.4)	126 303 (7.3)	135 478 (0.9)
1995		55 333 203 (10.4)	55 526 251 (3.3)	99.7 (6.9)	135 190 (7.0)	135 661 (0.1)
1996		55 293 517 (-0.1)	55 293 517 (-0.4)	100.0 (0.3)	133 205 (-1.5)	133 205 (-1.8)
1997		55 894 292 (1.1)	55 139 122 (-0.3)	101.4 (1.4)	133 944 (0.6)	132 135 (-0.8)
1998		51 901 691 (-7.1)	52 618 754 (-4.6)	98.6 (-2.7)	122 901 (-8.2)	124 599 (-5.7)
1999		49 021 079 (-5.6)	51 021 436 (-3.0)	96.1 (-2.6)	114 693 (-6.7)	119 373 (-4.2)
2000		49 742 022 (1.5)	53 380 560 (4.6)	93.2 (-3.0)	115 526 (0.7)	123 977 (3.9)
2001		49 862 209 (0.2)	54 560 222 (2.2)	91.4 (-1.9)	114 864 (-0.6)	125 687 (1.4)
2002 ^r		54 294 748 (8.9)	60 031 687 (10.0)	90.4 (-1.0)	123 862 (7.8)	136 950 (9.0)
2003 [@]		63 365 365 (16.7)	69 409 642 (15.6)	91.3 (0.9)	142 638 (15.2)	156 244 (14.1)
1998	1	12 537 252 ..	12 526 341 ..	100.1
	2	13 296 139 ..	13 624 240 ..	97.6
	3	13 128 656 ..	13 314 313 ..	98.6
	4	12 939 643 ..	13 153 861 ..	98.4
1999	1	11 952 312 (-4.7)	12 158 481 (-2.9)	98.3 (-1.8)
	2	11 560 193 (-13.1)	12 071 720 (-11.4)	95.8 (-1.9)
	3	11 952 618 (-9.0)	12 610 582 (-5.3)	94.8 (-3.9)
	4	13 555 956 (4.8)	14 180 653 (7.8)	95.6 (-2.8)
2000	1	11 292 475 (-5.5)	11 822 893 (-2.8)	95.5 (-2.8)
	2	11 922 183 (3.1)	12 713 753 (5.3)	93.8 (-2.1)
	3	13 047 037 (9.2)	14 235 034 (12.9)	91.7 (-3.3)
	4	13 480 326 (-0.6)	14 608 881 (3.0)	92.3 (-3.5)
2001	1	11 657 161 (3.2)	12 625 418 (6.8)	92.3 (-3.3)
	2	12 058 705 (1.1)	13 243 396 (4.2)	91.1 (-2.9)
	3	12 661 525 (-3.0)	14 013 790 (-1.6)	90.4 (-1.4)
	4	13 484 818 (0.0)	14,677,618 (0.5)	91.9 (-0.4)
2002	1 ^r	12 466 669 (6.9)	13,630,052 (8.0)	91.5 (-0.9)
	2 ^r	13 106 467 (8.7)	14,432,214 (9.0)	90.8 (-0.3)
	3 ^r	13 352 438 (5.5)	15,033,427 (7.3)	88.8 (-1.7)
	4 ^r	15 369 175 (14.0)	16,935,994 (15.4)	90.7 (-1.2)
2003	1 ^r	14 734 766 (18.2)	15,955,195 (17.1)	92.4 (1.0)
	2 ^r	12 916 227 (-1.5)	14,192,810 (-1.7)	91.0 (0.2)
	3 ^r	16 734 788 (25.3)	18,743,868 (24.7)	89.3 (0.5)
	4 [@]	18 979 585 (23.5)	20,517,769 (21.1)	92.5 (1.9)

r: 更正資料 Dado rectificado Rectified data
 @: 數字在日後會作出修訂 Dado a ser revisto no futuro Figures are subject to revisions later on

表二： 一九九三年至二零零三年以當年價格估算之本地生產總值及其主要支出項目
 QUADRO 2 : PRODUTO INTERNO BRUTO E PRINCIPAIS COMPONENTES DA DESPESA A PREÇOS CORRENTES, 1993 - 2003
 TABLE 2 : GROSS DOMESTIC PRODUCT AND MAIN COMPONENTS OF EXPENDITURE AT CURRENT PRICES, 1993 - 2003

		千澳門元 10 ³ MOP								
年份	季	本地生產 總值 ^a	私人 消費支出	政府最終 消費支出	固定資本 形成總額	庫存變化	貨物出口	服務出口	貨物進口	服務進口
Ano	Trimestre	Produto interno bruto ^a	Despesa de consumo privado	Despesa de consumo final do governo	Formação bruta de capital fixo	Variação de existências	Exportações de bens	Exportações de serviços	Importações de bens	Importações de serviços
Year	Quarter	Gross domestic product ^a	Private consumption expenditure	Government final consumption expenditure	Gross fixed capital formation	Changes in inventories	Exports of goods	Exports of services	Imports of goods	Imports of services
1		2	3	4	5	6	7	8	9	10
1993		45 193 020	14 912 017	3 500 407	15 481 503	421 643	14 236 218	19 754 788	19 519 936	3 593 620
1994		50 114 040	16 863 911	4 056 418	17 101 417	585 333	14 853 888	21 676 675	21 308 318	3 715 284
1995		55 333 203	18 609 920	4 673 073	16 043 748	253 645	15 915 329	25 128 711	21 259 827	4 031 396
1996		55 293 517	20 202 175	5 204 055	11 791 253	540 745	15 898 466	25 908 290	20 030 873	4 220 594
1997		55 894 292	20 996 521	5 732 077	11 836 504	112 786	17 129 171	25 226 452	20 126 293	5 012 926
1998		51 901 691	20 684 571	6 029 388	9 667 237	- 71 820	17 083 615	22 696 303	19 131 799	5 055 804
1999		49 021 079	20 402 894	6 771 792	8 668 299	83 278	17 579 982	21 657 019	20 329 798	5 812 388
2000		49 742 022	20 376 390	5 900 652	5 918 737	73 717	20 380 421	26 328 221	22 593 789	6 642 327
2001		49 862 209	20 646 369	5 968 569	5 132 822	28 906	18 472 950	30 273 269	23 492 933	7 167 743
2002 ^r		54 294 748	21 179 669	6 189 066	5 580 045	239 685	18 925 409	35 615 459	25 309 822	8 124 763
2003 [@]		63 365 365	21 900 167	6 600 158	8 412 234	261 955	20 700 104	41 769 744	27 875 834	8 403 162
1998	1	12 537 252	5 344 126	1 112 656	2 370 113	- 14 185	3 139 380	6 124 854	4 402 216	1 137 478
	2	13 296 139	5 150 596	1 654 792	2 498 397	- 19 064	4 385 967	5 672 131	4 774 903	1 271 777
	3	13 128 656	5 119 863	1 390 036	2 282 178	- 19 939	5 044 352	5 766 820	5 155 918	1 298 735
	4	12 939 643	5 069 987	1 871 903	2 516 548	- 18 631	4 513 916	5 132 497	4 798 762	1 347 814
1999	1	11 952 312	5 265 777	1 209 318	2 377 371	18 432	3 700 337	5 541 045	4 853 970	1 305 999
	2	11 560 193	4 872 995	1 717 793	1 813 807	21 288	4 444 604	5 061 058	4 953 645	1 417 707
	3	11 952 618	4 934 692	1 503 425	2 051 923	22 483	5 152 744	5 350 721	5 527 734	1 535 636
	4	13 555 956	5 329 430	2 341 256	2 425 198	21 074	4 282 297	5 704 196	4 994 449	1 553 046
2000	1	11 292 475	5 137 017	1 032 819	1 290 182	14 564	4 022 333	6 066 867	4 829 409	1 441 899
	2	11 922 183	4 925 272	1 579 916	1 518 729	19 491	5 252 116	5 940 722	5 685 326	1 628 737
	3	13 047 037	5 142 020	1 339 236	1 258 959	20 596	5 994 822	7 502 867	6 421 998	1 789 466
	4	13 480 326	5 172 080	1 948 681	1 850 866	19 065	5 111 150	6 817 765	5 657 056	1 782 225
2001	1	11 657 161	5 246 739	1 037 052	1 231 302	6 078	3 639 576	7 128 636	4 996 660	1 635 563
	2	12 058 705	5 034 302	1 597 330	1 174 174	7 829	4 876 905	7 157 714	6 019 097	1 770 452
	3	12 661 525	5 164 029	1 341 279	1 099 867	7 858	5 307 969	8 095 196	6 461 322	1 893 352
	4	13,484,818	5 201 299	1 992 907	1 627 478	7 140	4 648 500	7 891 723	6 015 854	1 868 376
2002	1 ^f	12 466 669	5 324 275	1 099 304	1 225 184	47 749	3 563 344	8 153 518	5 158 212	1 788 493
	2 ^f	13 106 467	5 145 662	1 550 068	1 277 145	62 623	4 917 642	8 550 889	6 438 422	1 959 141
	3 ^f	13 352 438	5 253 532	1 446 108	1 220 393	66 855	5 478 065	8 808 511	6 798 599	2 122 427
	4 ^f	15 369 175	5 456 200	2 093 586	1 857 323	62 457	4 966 358	10 102 540	6 914 588	2 254 701
2003	1 ^f	14 734 766	5 589 363	1 250 058	1 296 158	51 923	4 053 280	10 348 542	5 815 457	2 039 101
	2 ^f	12 916 227	5 032 128	1 723 163	1 629 830	66 926	5 363 771	7 348 552	6 440 012	1 808 131
	3 ^f	16 734 788	5 561 186	1 464 128	2 238 407	72 438	5 865 683	11 322 703	7 563 434	2 226 323
	4 [@]	18 979 585	5 717 491	2 162 808	3 247 839	70 668	5 417 370	12 749 947	8 056 932	2 329 607

a 本地生產總值 = 3+4+5+6+7+8-9-10 項
 Produto interno bruto = 3+4+5+6+7+8-9-10
 Gross domestic product = Columns (3+4+5+6+7+8-9-10)

表三： 一九九四年至二零零三年以當年價格估算之本地生產總值及其主要支出項目之同期變動率

QUADRO 3 : TAXAS DE VARIAÇÃO HOMÓLOGA DO PRODUTO INTERNO BRUTO E PRINCIPAIS COMPONENTES DA DESPESA A PREÇOS CORRENTES, 1994 - 2003

TABLE 3 : YEAR-ON-YEAR GROWTH RATES OF GROSS DOMESTIC PRODUCT AND MAIN COMPONENTS OF EXPENDITURE AT CURRENT PRICES, 1994 - 2003

年份	季	本地生產總值	私人消費支出	政府最終消費支出	固定資本形成總額	庫存變化	貨物出口	服務出口	貨物進口	服務進口	%
Ano	Trimestre	Produto interno bruto	Despesa de consumo privado	Despesa de consumo final do governo	Formação bruta de capital fixo	Variação de existências	Exportações de bens	Exportações de serviços	Importações de bens	Importações de serviços	
Year	Quarter	Gross domestic product	Private consumption expenditure	Government final consumption expenditure	Gross fixed capital formation	Changes in inventories	Exports of goods	Exports of services	Imports of goods	Imports of services	
1	2	3	4	5	6	7	8	9	10		
1994		10.9	13.1	15.9	10.5	38.8	4.3	9.7	9.2	3.4	
1995		10.4	10.4	15.2	-6.2	-56.7	7.1	15.9	-0.2	8.5	
1996		-0.1	8.6	11.4	-26.5	113.2	-0.1	3.1	-5.8	4.7	
1997		1.1	3.9	10.1	0.4	-79.1	7.7	-2.6	0.5	18.8	
1998		-7.1	-1.5	5.2	-18.3	-163.7	-0.3	-10.0	-4.9	0.9	
1999		-5.6	-1.4	12.3	-10.3	216.0	2.9	-4.6	6.3	15.0	
2000		1.5	-0.1	-12.9	-31.7	-11.5	15.9	21.6	11.1	14.3	
2001		0.2	1.3	1.2	-13.3	-60.8	-9.4	15.0	4.0	7.9	
2002 ^r		8.9	2.6	3.7	8.7	729.2	2.4	17.6	7.7	13.4	
2003 [@]		16.7	3.4	6.6	50.8	9.3	9.4	17.3	10.1	3.4	
1999	1	-4.7	-1.5	8.7	0.3	229.9	17.9	-9.5	10.3	14.8	
	2	-13.1	-5.4	3.8	-27.4	211.7	1.3	-10.8	3.7	11.5	
	3	-9.0	-3.6	8.2	-10.1	212.8	2.1	-7.2	7.2	18.2	
	4	4.8	5.1	25.1	-3.6	213.1	-5.1	11.1	4.1	15.2	
2000	1	-5.5	-2.4	-14.6	-45.7	-21.0	8.7	9.5	-0.5	10.4	
	2	3.1	1.1	-8.0	-16.3	-8.4	18.2	17.4	14.8	14.9	
	3	9.2	4.2	-10.9	-38.6	-8.4	16.3	40.2	16.2	16.5	
	4	-0.6	-3.0	-16.8	-23.7	-9.5	19.4	19.5	13.3	14.8	
2001	1	3.2	2.1	0.4	-4.6	-58.3	-9.5	17.5	3.5	13.4	
	2	1.1	2.2	1.1	-22.7	-59.8	-7.1	20.5	5.9	8.7	
	3	-3.0	0.4	0.2	-12.6	-61.8	-11.5	7.9	0.6	5.8	
	4	0.0	0.6	2.3	-12.1	-62.5	-9.1	15.8	6.3	4.8	
2002	1 ^r	6.9	1.5	6.0	-0.5	685.6	-2.1	14.4	3.2	9.4	
	2 ^r	8.7	2.2	-3.0	8.8	699.9	0.8	19.5	7.0	10.7	
	3 ^r	5.5	1.7	7.8	11.0	750.7	3.2	8.8	5.2	12.1	
	4 ^r	14.0	4.9	5.1	14.1	774.7	6.8	28.0	14.9	20.7	
2003	1 ^r	18.2	5.0	13.7	5.8	8.7	13.7	26.9	12.7	14.0	
	2 ^r	-1.5	-2.2	11.2	27.6	6.9	9.1	-14.1	0.0	-7.7	
	3 ^r	25.3	5.9	1.2	83.4	8.4	7.1	28.5	11.2	4.9	
	4 [@]	23.5	4.8	3.3	74.9	13.1	9.1	26.2	16.5	3.3	

表四： 一九九三年至二零零三年以不變(一九九六年)價格估算之本地生產總值及其主要支出項目
 QUADRO 4: PRODUTO INTERNO BRUTO E PRINCIPAIS COMPONENTES DA DESPESA A PREÇOS CONSTANTES (1996), 1993 - 2003
 TABLE 4: GROSS DOMESTIC PRODUCT AND MAIN COMPONENTS OF EXPENDITURE AT CONSTANT (1996) PRICES, 1993 - 2003

		千澳門元 10 ³ MOP								
年份	季	本地生產 總值 ^a	私人 消費支出	政府最終 消費支出	固定資本 形成總額	庫存變化	貨物出口	服務出口	貨物進口	服務進口
Ano	Trimestre	Produto interno bruto ^a	Despesa de consumo privado	Despesa de consumo final do governo	Formação bruta de capital fixo	Variação de existências	Exportações de bens	Exportações de serviços	Importações de bens	Importações de serviços
Year	Quarter	Gross domestic product ^a	Private consumption expenditure	Government final consumption expenditure	Gross fixed capital formation	Changes in inventories	Exports of goods	Exports of services	Imports of goods	Imports of services
1		2	3	4	5	6	7	8	9	10
1993		51 561 604	17 803 451	4 344 284	16 248 482	444 706	14 199 765	23 662 420	20 392 743	4 748 761
1994		53 754 568	18 891 205	4 657 515	16 352 908	614 425	15 226 223	24 538 480	22 187 657	4 338 531
1995		55 526 251	19 423 043	4 980 848	15 126 693	265 927	15 775 270	26 273 460	22 030 894	4 288 096
1996		55 293 517	20 202 175	5 204 055	11 791 253	540 745	15 898 466	25 908 290	20 030 873	4 220 594
1997		55 139 122	20 490 006	5 416 383	12 017 520	107 031	16 502 637	24 579 790	19 166 601	4 807 644
1998		52 618 754	20 284 746	5 550 899	10 522 822	- 71 648	17 118 472	22 955 390	18 966 343	4 775 583
1999		51 021 436	20 577 159	6 409 040	9 808 478	84 425	17 735 998	22 774 039	20 786 522	5 581 182
2000		53 380 560	20 768 374	5 778 042	7 026 718	70 814	20 228 838	27 954 876	22 070 367	6 376 735
2001		54 560 222	21 375 627	5 771 776	6 391 089	28 598	19 184 147	32 587 481	23 945 145	6 833 351
2002 ^r		60 031 687	22 472 459	5 932 210	6 600 969	248 575	20 418 557	39 111 157	26 838 182	7 914 058
2003 ^e		69 409 642	23 583 573	6 285 402	9 273 252	276 300	22 336 117	45 892 115	29 815 298	8 421 818
1998	1	12 526 341	5 186 734	1 010 564	2 516 038	- 13 734	2 924 434	6 124 942	4 145 710	1 076 928
	2	13 624 240	5 032 055	1 525 785	2 637 806	- 18 163	4 432 060	5 704 076	4 487 984	1 201 396
	3	13 314 313	5 053 552	1 279 931	2 599 697	- 20 555	5 139 431	5 860 755	5 376 472	1 222 026
	4	13 153 861	5 012 405	1 734 619	2 769 281	- 19 196	4 622 546	5 265 616	4 956 178	1 275 234
1999	1	12 158 481	5 244 465	1 129 741	2 637 687	19 254	3 696 640	5 740 154	5 061 198	1 248 261
	2	12 071 720	4 902 644	1 622 030	2 079 948	22 079	4 624 978	5 351 438	5 165 129	1 366 267
	3	12 610 582	5 034 863	1 425 542	2 325 163	22 693	5 236 528	5 684 859	5 644 149	1 474 919
	4	14 180 653	5 395 187	2 231 727	2 765 680	20 399	4 177 851	5 997 589	4 916 045	1 491 734
2000	1	11 822 893	5 204 233	1 001 793	1 547 713	14 448	3 914 694	6 377 912	4 844 850	1 393 051
	2	12 713 753	5 009 527	1 546 298	1 820 563	18 818	5 186 737	6 311 221	5 611 973	1 567 439
	3	14 235 034	5 282 920	1 311 659	1 508 906	19 895	6 099 598	8 021 925	6 301 219	1 708 649
	4	14 608 881	5 271 694	1 918 292	2 149 536	17 653	5 027 809	7 243 818	5 312 325	1 707 597
2001	1	12 625 418	5 378 404	989 030	1 569 135	5 839	3 612 506	7 586 077	4 964 783	1 550 791
	2	13 243 396	5 175 294	1 541 272	1 441 582	7 638	5 123 592	7 698 939	6 053 557	1 691 365
	3	14 013 790	5 387 560	1 293 655	1 408 949	7 838	5 599 842	8 734 671	6 619 276	1 799 448
	4	14,677,618	5 434 368	1 947 818	1 971 424	7 282	4 848 208	8 567 794	6 307 529	1 791 747
2002	1 ^r	13 630 052	5 599 818	1 029 015	1 502 043	49 194	3 674 098	8 863 266	5 365 814	1 721 569
	2 ^r	14 432 214	5 447 344	1 470 020	1 537 052	65 878	5 383 619	9 405 860	6 965 741	1 911 818
	3 ^r	15 033 427	5 624 277	1 389 433	1 457 679	69 603	6 089 511	9 720 380	7 253 367	2 064 087
	4 ^r	16 935 994	5 801 021	2 043 742	2 104 195	63 901	5 271 329	11 121 652	7 253 260	2 216 585
2003	1 ^r	15 955 195	5 953 149	1 169 420	1 487 131	54 446	4 118 559	11 336 164	6 166 357	1 997 317
	2 ^r	14 192 810	5 402 953	1 630 998	1 894 665	71 011	5 912 556	8 135 155	7 015 449	1 839 079
	3 ^r	18 743 868	6 068 155	1 389 137	2 498 390	75 854	6 514 555	12 476 347	8 037 837	2 240 733
	4 ^e	20 517 769	6 159 316	2 095 847	3 393 065	74 988	5 790 446	13 944 450	8 595 655	2 344 689

a 本地生產總值 = 3 + 4 + 5 + 6 + 7 + 8 - 9 - 10 項
 Produto interno bruto = 3 + 4 + 5 + 6 + 7 + 8 - 9 - 10
 Gross domestic product = Columns (3 + 4 + 5 + 6 + 7 + 8 - 9 - 10)

表五： 一九九四年至二零零三年以不變(一九九六年)價格估算之本地生產總值及其主要支出項目之同期變動率

QUADRO 5 TAXAS DE VARIAÇÃO HOMÓLOGA DO PRODUTO INTERNO BRUTO E PRINCIPAIS COMPONENTES DA DESPESA A PREÇOS CONSTANTES (1996), 1994 - 2003

TABLE 5: YEAR-ON-YEAR GROWTH RATES OF GROSS DOMESTIC PRODUCT AND MAIN COMPONENTS OF EXPENDITURE AT CONSTANT (1996) PRICES, 1994 - 2003

年份	季	本地生產總值	私人消費支出	政府最終消費支出	固定資本形成總額	庫存變化	貨物出口	服務出口	貨物進口	服務進口
Ano	Trimestre	Produto interno bruto	Despesa de consumo privado	Despesa de consumo final do governo	Formação bruta de capital fixo	Variação de existências	Exportações de bens	Exportações de serviços	Importações de bens	Importações de serviços
Year	Quarter	Gross domestic product	Private consumption expenditure	Government final consumption expenditure	Gross fixed capital formation	Changes in inventories	Exports of goods	Exports of services	Imports of goods	Imports of services
1		2	3	4	5	6	7	8	9	10
1994		4.3	6.1	7.2	0.6	38.2	7.2	3.7	8.8	-8.6
1995		3.3	2.8	6.9	-7.5	-56.7	3.6	7.1	-0.7	-1.2
1996		-0.4	4.0	4.5	-22.1	103.3	0.8	-1.4	-9.1	-1.6
1997		-0.3	1.4	4.1	1.9	-80.2	3.8	-5.1	-4.3	13.9
1998		-4.6	-1.0	2.5	-12.4	-166.9	3.7	-6.6	-1.0	-0.7
1999		-3.0	1.4	15.5	-6.8	217.8	3.6	-0.8	9.6	16.9
2000		4.6	0.9	-9.8	-28.4	-16.1	14.1	22.7	6.2	14.3
2001		2.2	2.9	-0.1	-9.0	-59.6	-5.2	16.6	8.5	7.2
2002 ^r		10.0	5.1	2.8	3.3	769.2	6.4	20.0	12.1	15.8
2003 ^e		15.6	4.9	6.0	40.5	11.2	9.4	17.3	11.1	6.4
1999	1	-2.9	1.1	11.8	4.8	240.2	26.4	-6.3	22.1	15.9
	2	-11.4	-2.6	6.3	-21.1	221.6	4.4	-6.2	15.1	13.7
	3	-5.3	-0.4	11.4	-10.6	210.4	1.9	-3.0	5.0	20.7
	4	7.8	7.6	28.7	-0.1	206.3	-9.6	13.9	-0.8	17.0
2000	1	-2.8	-0.8	-11.3	-41.3	-25.0	5.9	11.1	-4.3	11.6
	2	5.3	2.2	-4.7	-12.5	-14.8	12.1	17.9	8.7	14.7
	3	12.9	4.9	-8.0	-35.1	-12.3	16.5	41.1	11.6	15.8
	4	3.0	-2.3	-14.0	-22.3	-13.5	20.3	20.8	8.1	14.5
2001	1	6.8	3.3	-1.3	1.4	-59.6	-7.7	18.9	2.5	11.3
	2	4.2	3.3	-0.3	-20.8	-59.4	-1.2	22.0	7.9	7.9
	3	-1.6	2.0	-1.4	-6.6	-60.6	-8.2	8.9	5.0	5.3
	4	0.5	3.1	1.5	-8.3	-58.8	-3.6	18.3	18.7	4.9
2002	1 ^f	8.0	4.1	4.0	-4.3	742.4	1.7	16.8	8.1	11.0
	2 ^f	9.0	5.3	-4.6	6.6	762.5	5.1	22.2	15.1	13.0
	3 ^f	7.3	4.4	7.4	3.5	788.0	8.7	11.3	9.6	14.7
	4 ^f	15.4	6.7	4.9	6.7	777.5	8.7	29.8	15.0	23.7
2003	1 ^f	17.1	6.3	13.6	-1.0	10.7	12.1	27.9	14.9	16.0
	2 ^f	-1.7	-0.8	11.0	23.3	7.8	9.8	-13.5	0.7	-3.8
	3 ^f	24.7	7.9	0.0	71.4	9.0	7.0	28.4	10.8	8.6
	4 ^e	21.1	6.2	2.5	61.3	17.4	9.8	25.4	18.5	5.8

可提供之統計表
QUADROS DISPONÍVEIS
AVAILABLE INFORMATION

- 六 一九九三年至二零零三年以當年價格估算之本地生產總值及其主要支出項目之名義結構
6 ESTRUTURA NOMINAL DO PRODUTO INTERNO BRUTO E PRINCIPAIS COMPONENTES DA DESPESA A PREÇOS CORRENTES, 1993 – 2003
6 NOMINAL STRUCTURE OF GROSS DOMESTIC PRODUCT AND MAIN COMPONENTS OF EXPENDITURE AT CURRENT PRICES, 1993 – 2003
- 七 一九九三年至二零零三年以不變價格估算之本地生產總值及其主要支出項目之實質結構 (一九九六年=100)
7 ESTRUTURA REAL (1996=100) DO PRODUTO INTERNO BRUTO E PRINCIPAIS COMPONENTES DA DESPESA A PREÇOS CONSTANTES, 1993 – 2003
7 REAL STRUCTURE (1996=100) OF GROSS DOMESTIC PRODUCT AND MAIN COMPONENTS OF EXPENDITURE AT CONSTANT PRICES, 1993 – 2003
- 八 一九九三年至二零零三年以當年價格估算之私人消費支出及政府最終消費支出
8 DESPESA DE CONSUMO PRIVADO E DESPESA DE CONSUMO FINAL DO GOVERNO A PREÇOS CORRENTES, 1993 – 2003
8 PRIVATE CONSUMPTION EXPENDITURE AND GOVERNMENT FINAL CONSUMPTION EXPENDITURE AT CURRENT PRICES, 1993 – 2003
- 九 一九九四年至二零零三年以當年價格估算之私人消費支出及政府最終消費支出之同期變動率
9 TAXAS DE VARIAÇÃO HOMÓLOGA DA DESPESA DE CONSUMO PRIVADO E DESPESA DE CONSUMO FINAL DO GOVERNO A PREÇOS CORRENTES, 1994 – 2003
9 YEAR-ON-YEAR GROWTH RATES OF PRIVATE CONSUMPTION EXPENDITURE AND GOVERNMENT FINAL CONSUMPTION EXPENDITURE AT CURRENT PRICES, 1994 – 2003
- 十 一九九三年至二零零三年以不變 (一九九六年) 價格估算之私人消費支出及政府最終消費支出
10 DESPESA DE CONSUMO PRIVADO E DESPESA DE CONSUMO FINAL DO GOVERNO A PREÇOS CONSTANTES (1996), 1993 – 2003
10 PRIVATE CONSUMPTION EXPENDITURE AND GOVERNMENT FINAL CONSUMPTION EXPENDITURE AT CONSTANT (1996) PRICES, 1993 – 2003

-
- 十一 一九九四年至二零零三年以不變（一九九六年）價格估算之私人消費支出及政府最終消費支出之同期變動率
- 11 TAXAS DE VARIAÇÃO HOMÓLOGA DA DESPESA DE CONSUMO PRIVADO E DESPESA DE CONSUMO FINAL DO GOVERNO A PREÇOS CONSTANTES (1996), 1994 – 2003
- 11 YEAR-ON-YEAR GROWTH RATES OF PRIVATE CONSUMPTION EXPENDITURE AND GOVERNMENT FINAL CONSUMPTION EXPENDITURE AT CONSTANT (1996) PRICES, 1994 – 2003
- 十二 一九九三年至二零零三年以當年價格並按固定資產類別及機構部門估算之固定資本形成總額
- 12 FORMAÇÃO BRUTA DE CAPITAL FIXO, POR CATEGORIAS DE ACTIVOS FIXOS E SECTORES INSTITUCIONAIS A PREÇOS CORRENTES, 1993 – 2003
- 12 GROSS FIXED CAPITAL FORMATION BY TYPE OF FIXED ASSETS AND INSTITUTIONAL SECTORS AT CURRENT PRICES, 1993 – 2003
- 十三 一九九四年至二零零三年以當年價格並按固定資產類別及機構部門估算之固定資本形成總額之同期變動率
- 13 TAXAS DE VARIAÇÃO HOMÓLOGA DA FORMAÇÃO BRUTA DE CAPITAL FIXO, POR CATEGORIAS DE ACTIVOS FIXOS E SECTORES INSTITUCIONAIS A PREÇOS CORRENTES, 1994 – 2003
- 13 YEAR-ON-YEAR GROWTH RATES OF GROSS FIXED CAPITAL FORMATION BY TYPE OF FIXED ASSETS AND INSTITUTIONAL SECTORS AT CURRENT PRICES, 1994 – 2003
- 十四 一九九三年至二零零三年以不變（一九九六年）價格並按固定資產類別及機構部門估算之固定資本形成總額
- 14 FORMAÇÃO BRUTA DE CAPITAL FIXO, POR CATEGORIAS DE ACTIVOS FIXOS E SECTORES INSTITUCIONAIS A PREÇOS CONSTANTES (1996), 1993 – 2003
- 14 GROSS FIXED CAPITAL FORMATION BY TYPE OF FIXED ASSETS AND INSTITUTIONAL SECTORS AT CONSTANT (1996) PRICES, 1993 – 2003
- 十五 一九九四年至二零零三年以不變（一九九六年）價格並按固定資產類別及機構部門估算之固定資本形成總額之同期變動率
- 15 TAXAS DE VARIAÇÃO HOMÓLOGA DA FORMAÇÃO BRUTA DE CAPITAL FIXO, POR CATEGORIAS DE ACTIVOS FIXOS E SECTORES INSTITUCIONAIS A PREÇOS CONSTANTES (1996), 1994 – 2003
- 15 YEAR-ON-YEAR GROWTH RATES OF GROSS FIXED CAPITAL FORMATION BY TYPE OF FIXED ASSETS AND INSTITUTIONAL SECTORS AT CONSTANT (1996) PRICES, 1994 – 2003
- 十六 一九九三年至二零零三年以當年價格估算之出口
- 16 EXPORTAÇÕES A PREÇOS CORRENTES, 1993 – 2003
- 16 EXPORTS AT CURRENT PRICES, 1993 – 2003

十七	一九九四年至二零零三年以當年價格估算出口之同期變動率
17	TAXAS DE VARIAÇÃO HOMÓLOGA DAS EXPORTAÇÕES A PREÇOS CORRENTES, 1994 – 2003
17	YEAR-ON-YEAR GROWTH RATES OF EXPORTS AT CURRENT PRICES, 1994 – 2003
十八	一九九三年至二零零三年以不變（一九九六年）價格估算之出口
18	EXPORTAÇÕES A PREÇOS CONSTANTES (1996), 1993 – 2003
18	EXPORTS AT CONSTANT (1996) PRICES, 1993 – 2003
十九	一九九四年至二零零三年以不變（一九九六年）價格估算出口之同期變動率
19	TAXAS DE VARIAÇÃO HOMÓLOGA DAS EXPORTAÇÕES A PREÇOS CONSTANTES (1996), 1994 – 2003
19	YEAR-ON-YEAR GROWTH RATES OF EXPORTS AT CONSTANT (1996) PRICES, 1994 – 2003
二十	一九九三年至二零零三年以當年價格估算之進口
20	IMPORTAÇÕES A PREÇOS CORRENTES, 1993 – 2003
20	IMPORTS AT CURRENT PRICES, 1993 – 2003
二十一	一九九四年至二零零三年以當年價格估算進口之同期變動率
21	TAXAS DE VARIAÇÃO HOMÓLOGA DAS IMPORTAÇÕES A PREÇOS CORRENTES, 1994 – 2003
21	YEAR-ON-YEAR GROWTH RATES OF IMPORTS AT CURRENT PRICES, 1994 – 2003
二十二	一九九三年至二零零三年以不變（一九九六年）價格估算之進口
22	IMPORTAÇÕES A PREÇOS CONSTANTES (1996), 1993 – 2003
22	IMPORTS AT CONSTANT (1996) PRICES, 1993 – 2003
二十三	一九九四年至二零零三年以不變（一九九六年）價格估算進口之同期變動率
23	TAXAS DE VARIAÇÃO HOMÓLOGA DAS IMPORTAÇÕES A PREÇOS CONSTANTES (1996), 1994 – 2003
23	YEAR-ON-YEAR GROWTH RATES OF IMPORTS AT CONSTANT (1996) PRICES, 1994 – 2003