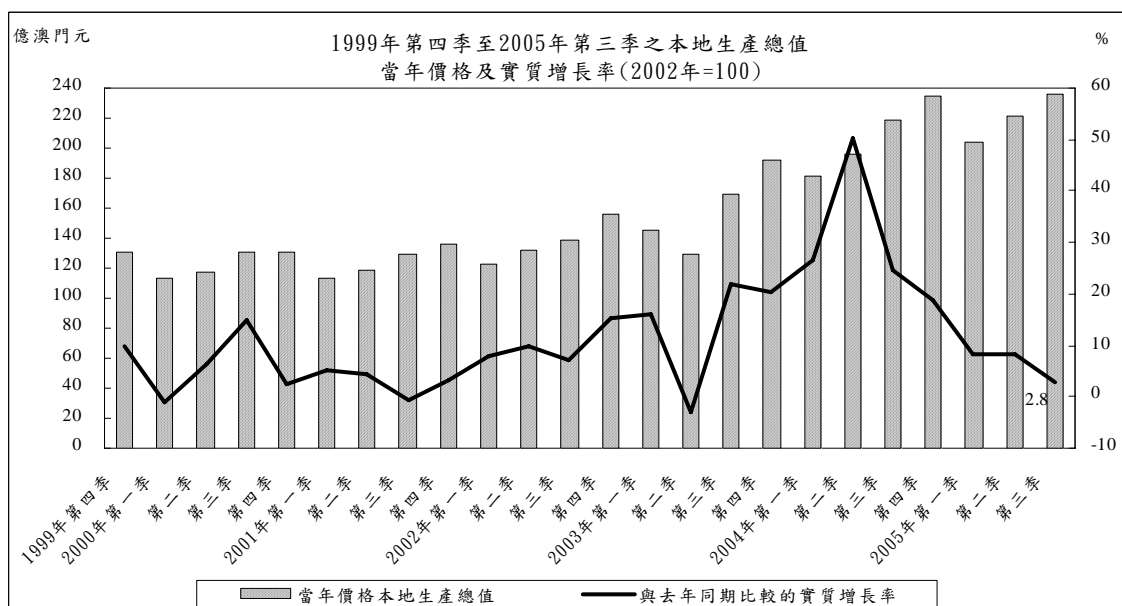


季度本地生產總值

二零零五年第三季

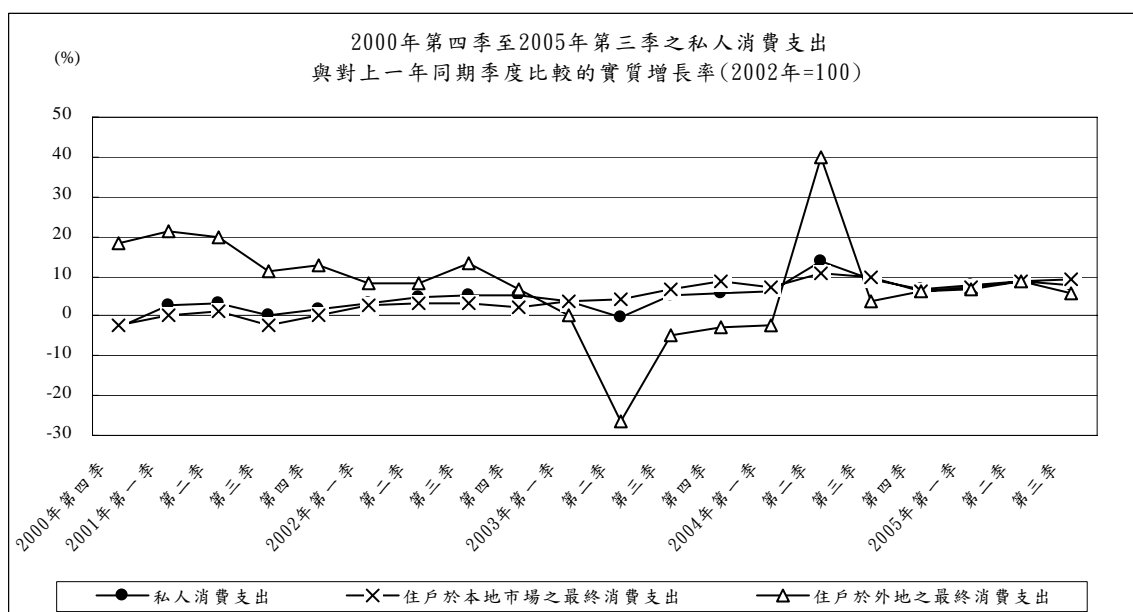
三號刊

2005年第三季的博彩旅遊業表現平穩，博彩總收益與去年同季比較名義上升2.6%，旅客消費（不包括博彩消費）實質上升5.2%^a，而投資方面，由於多項大型工程全面施工而大幅上升，成為第三季經濟增長的主要動力。貨物出口跌幅收窄，實質下跌9.8%。第三季的本地生產總值錄得2.8%的實質增長。根據最新的資料估算，第一季及第二季的增幅由原來的8.6%及8.2%分別向下修訂為8.3%及8.1%，而2004年的增幅則由原來的28.0%向上修訂為28.6%。

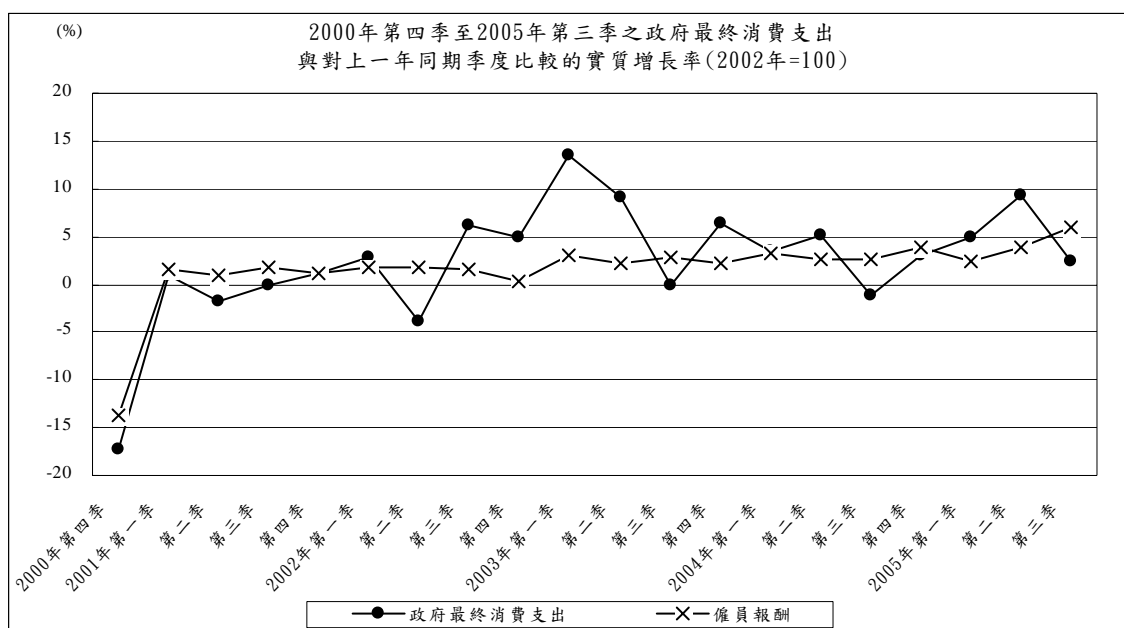


按本地生產總值各個主要組成部分分析，2005年第三季私人消費支出上升7.5%，較第二季的8.6%為低；其中住戶在本地市場的最終消費支出上升9.3%，在外地的消費則上升5.7%。

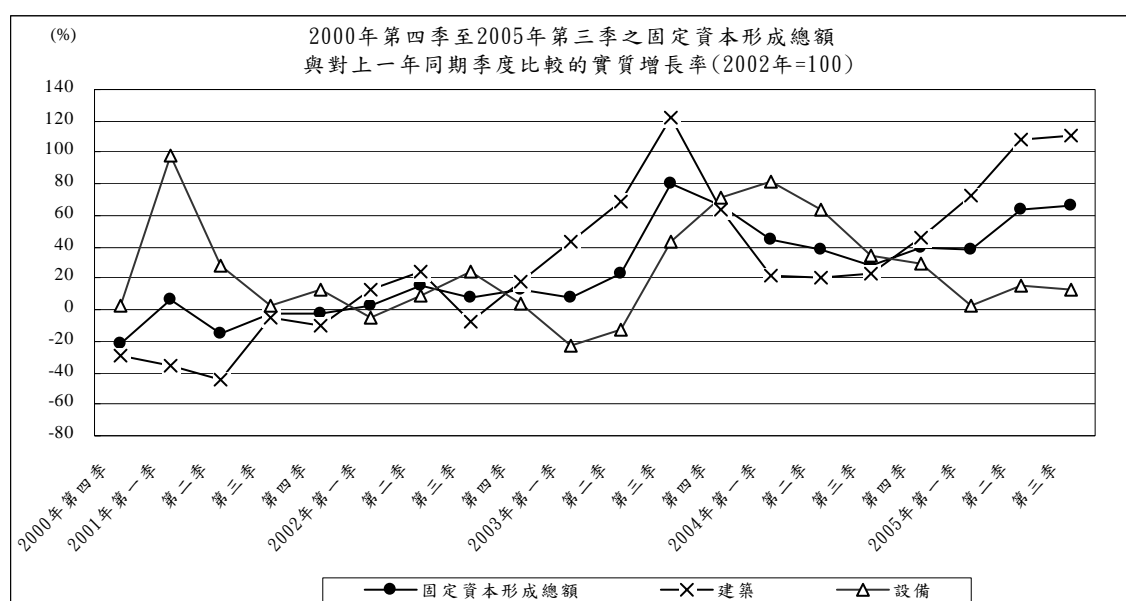
^a 如無特別聲明，本分析所提及之變動率均是指與去年同期比較的實質變動率。



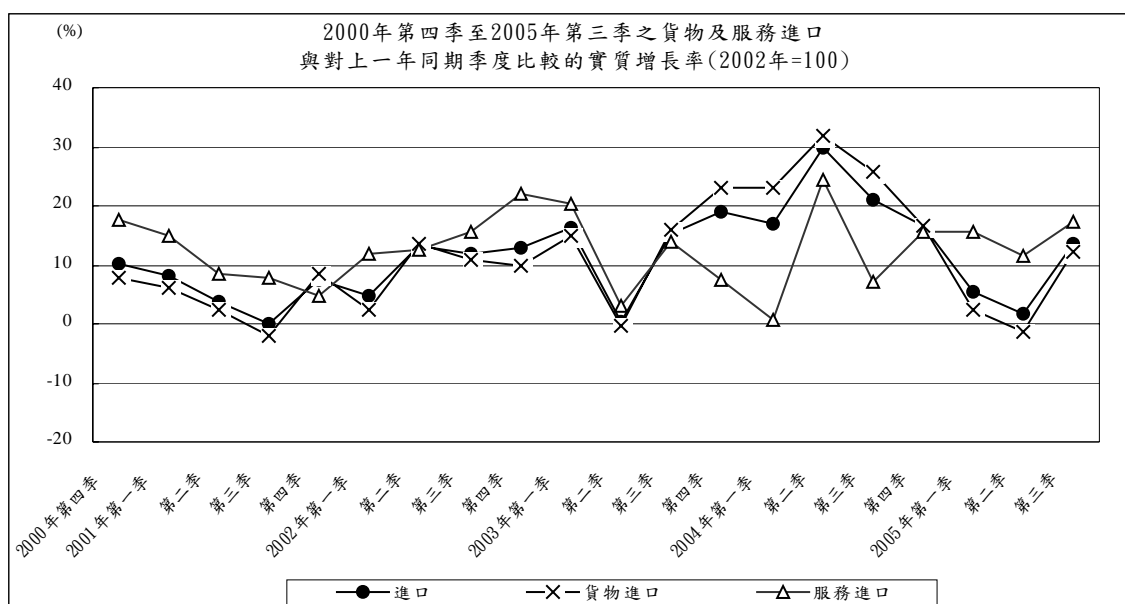
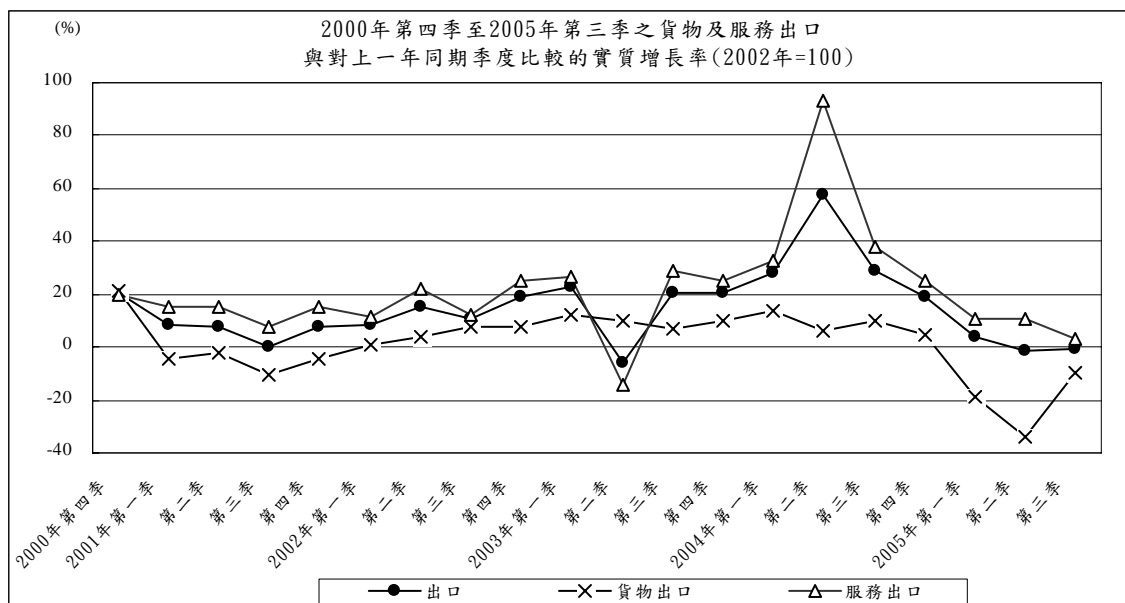
政府最終消費上升2.5%，較第二季的9.3%為低，其中僱員報酬增長6.0%，而貨物及服務的淨購入則下跌16.1%。



反映投資的固定資本形成總額大幅上升66.5%，較第二季的63.7%為高，增長持續強勁。其中私人部門的投資錄得76.6%的升幅，主要原因是建築投資大幅上升146.7%所致，而設備投資上升12.8%；至於政府部門的投資則上升20.0%，其中建築投資及設備投資分別上升21.5%及8.9%。綜合私人及政府部門的數據估算，2005年第三季的整體建築投資上升110.7%，較第二季的107.9%為高；設備投資則上升12.6%，較第二季的15.1%為低。



在有形貿易方面，貨物出口總額的名義跌幅由第二季的33.5%收窄至第三季的11.0%，而實質跌幅由第二季的33.6%收窄至第三季的9.8%，其中出口美國、歐盟及中國大陸分別錄得11.0%、19.4%及13.7%的名義跌幅；貨物進口的名義升幅及實質升幅分別為16.4%及12.3%，均較第二季的1.9%及-1.3%為高。至於無形貿易（服務出口）方面，博彩服務出口的升幅為1.5%；由於旅客人次上升，緩和旅客人均消費（不包括博彩消費）下跌的影響，致使總體旅客消費上升5.2%；運輸服務出口大幅上升23.8%。綜合主要的服務出口數據估算，整體無形貿易出口的增幅為3.4%，較第二季的10.7%為低。另一方面，服務進口上升17.3%，較第二季的11.6%為高。



1. 1998年至2005年之本地生產總值、人均本地生產總值及本地生產總值之平減物價指數

Produto Interno Bruto, Produto Interno Bruto per capita e deflator implícito do Produto Interno Bruto, 1998 - 2005

Gross Domestic Product, per-capita Gross Domestic Product and implicit deflator of Gross Domestic Product, 1998 - 2005

年份	季	本地生產總值, 以當年價格計算	本地生產總值, 以不變(2002年) 價格計算	本地生產總值之 平減物價指數 (2002 年=100)	人均本地生產總值, 以當年價格計算	人均本地生產總值, 以不變(2002年) 價格計算
Ano	Trimestre	Produto Interno Bruto, a preços correntes	Produto Interno Bruto, a preços constantes (2002)	Deflator implícito (ano:2002=100) do Produto Interno Bruto	Produto Interno Bruto per capita , a preços correntes	Produto Interno Bruto per capita , a preços constantes (2002)
Year	Quarter	Gross Domestic Product, at current prices	Gross Domestic Product, at constant (2002) prices	Implicit deflator (year:2002=100) of Gross Domestic Product	Per-capita Gross Domestic Product, at current prices	Per-capita Gross Domestic Product, at constant (2002) prices
		千澳門元 1000 MOP	千澳門元 1000 MOP		澳門元 MOP	澳門元 MOP
1		2	3	4	5	6
1998		49 360 446 (-7.3)	46 862 141 (-4.6)	105.3 (-2.8)	116 884 (-8.4)	110 968 (-5.7)
1999		47 287 433 (-4.2)	45 756 819 (-2.4)	103.3 (-1.9)	110 637 (-5.3)	107 056 (-3.5)
2000		48 972 396 (3.6)	48 386 399 (5.7)	101.2 (-2.1)	113 739 (2.8)	112 378 (5.0)
2001		49 704 405 (1.5)	49 783 977 (2.9)	99.8 (-1.4)	114 501 (0.7)	114 684 (2.1)
2002		54 818 745 (10.3)	54 818 745 (10.1)	100.0 (0.2)	125 058 (9.2)	125 058 (9.0)
2003 ^r		63 566 339 (16.0)	62 583 576 (14.2)	101.6 (1.6)	142 825 (14.2)	140 616 (12.4)
2004 ^r		83 103 308 (30.7)	80 485 706 (28.6)	103.3 (1.7)	181 880 (27.3)	176 151 (25.3)
1999	1	11 330 882 (-5.0)	10 837 547 (-3.1)	104.6 (-1.9)
	2	11 145 060 (-11.6)	10 761 401 (-11.7)	103.6 (0.2)
	3	11 742 756 (-6.9)	11 401 607 (-3.8)	103.0 (-3.2)
	4	13 068 734 (7.0)	12 756 264 (9.7)	102.4 (-2.5)
2000	1	11 271 528 (-0.5)	10 740 974 (-0.9)	104.9 (0.4)
	2	11 678 777 (4.8)	11 465 103 (6.5)	101.9 (-1.6)
	3	13 017 268 (10.9)	13 096 407 (14.9)	99.4 (-3.5)
	4	13 004 822 (-0.5)	13 083 915 (2.6)	99.4 (-3.0)
2001	1	11 295 949 (0.2)	11 282 722 (5.0)	100.1 (-4.6)
	2	11 857 329 (1.5)	11 966 772 (4.4)	99.1 (-2.7)
	3	12 957 768 (-0.5)	13 030 035 (-0.5)	99.4 (0)
	4	13 593 359 (4.5)	13 504 448 (3.2)	100.7 (1.3)
2002	1	12 218 950 (8.2)	12 147 810 (7.7)	100.6 (0.5)
	2	13 188 650 (11.2)	13 146 656 (9.9)	100.3 (1.2)
	3	13 819 848 (6.7)	13 962 679 (7.2)	99.0 (-0.5)
	4	15 591 297 (14.7)	15 561 600 (15.2)	100.2 (-0.5)
2003	1 ^r	14 484 623 (18.5)	14 119 042 (16.2)	102.6 (2.0)
	2 ^r	12 878 083 (-2.4)	12 740 603 (-3.1)	101.1 (0.8)
	3 ^r	16 978 384 (22.9)	17 001 791 (21.8)	99.9 (0.9)
	4 ^r	19 225 248 (23.3)	18 722 140 (20.3)	102.7 (2.5)
2004	1 ^r	18 159 355 (25.4)	17 857 682 (26.5)	101.7 (-0.9)
	2 ^r	19 608 350 (52.3)	19 163 530 (50.4)	102.3 (1.2)
	3 ^r	21 869 671 (28.8)	21 213 708 (24.8)	103.1 (3.2)
	4 ^r	23 465 931 (22.1)	22 250 785 (18.8)	105.5 (2.7)
2005	1 ^r	20 400 047 (12.3)	19 338 645 (8.3)	105.5 (3.7)
	2 ^r	22 080 659 (12.6)	20 710 869 (8.1)	106.6 (4.2)
	3 ^e	23 563 014 (7.7)	21 817 676 (2.8)	108.0 (4.8)

@ : 數字在日後會作出修訂 Dado a ser revisto no futuro Figures are subject to revisions later on
 r : 更正資料 Dado rectificado Rectified data

季度本地生產總值
 PRODUTO INTERNO BRUTO TRIMESTRAL
 QUARTERLY GROSS DOMESTIC PRODUCT

二零零五年第三季 統計暨普查局 三號刊
 3º TRIMESTRE/2005 DSEC Nº 3
 3rd QUARTER 2005 DSEC No. 3

2. 1998年至2005年以當年價格估算之本地生產總值及其主要支出項目

Produto Interno Bruto e principais componentes da despesa a preços correntes, 1998-2005

Gross Domestic Product and main components of expenditure at current prices, 1998-2005

千澳門元
 1000 MOP

年份	季	本地生產總值 ^a	私人消費支出	政府最終消費支出	固定資本形成總額	庫存變化	貨物出口	服務出口	貨物進口	服務進口
Ano	Trimestre	Produto Interno Bruto ^a	Despesa de consumo privado	Despesa de consumo final do governo	Formação bruta de capital fixo	Variação de existências	Exportações de bens	Exportações de serviços	Importações de bens	Importações de serviços
Year	Quarter	Gross Domestic Product ^a	Private consumption expenditure	Government final consumption expenditure	Gross fixed capital formation	Changes in inventories	Exports of goods	Exports of services	Imports of goods	Imports of services
1		2	3	4	5	6	7	8	9	10
1998		49 360 446	20 231 861	6 182 197	8 829 850	- 71 820	17 083 615	24 672 961	21 915 363	5 652 856
1999		47 287 433	20 102 405	6 918 804	8 275 070	83 278	17 579 981	23 539 140	22 961 408	6 249 836
2000		48 972 396	19 706 940	6 045 116	5 618 314	73 717	20 380 421	28 799 077	24 392 564	7 258 625
2001		49 704 405	19 797 608	6 108 172	5 118 950	18 762	18 472 950	32 565 397	24 549 842	7 827 592
2002		54 818 745	20 222 476	6 322 928	5 800 686	240 156	18 925 409	38 240 607	25 985 045	8 948 473
2003 ^f		63 566 339	20 670 477	6 830 034	8 981 935	318 502	20 700 104	44 991 347	29 164 701	9 761 360
2004 ^f		83 103 308	22 795 858	7 093 229	13 426 302	600 879	22 561 083	64 712 112	37 087 247	10 998 909
1999	1	11 330 882	5 140 900	1 224 635	2 232 991	18 432	3 700 336	6 127 200	5 702 339	1 411 273
	2	11 145 060	4 875 403	1 738 295	1 756 997	21 288	4 444 604	5 433 007	5 601 295	1 523 240
	3	11 742 756	5 055 636	1 557 713	1 985 683	22 483	5 152 744	5 680 801	6 096 083	1 616 221
	4	13 068 734	5 030 467	2 398 161	2 299 399	21 074	4 282 297	6 298 131	5 561 692	1 699 103
2000	1	11 271 528	4 949 478	1 032 925	1 285 560	14 564	4 022 333	6 783 186	5 219 233	1 597 285
	2	11 678 777	4 750 500	1 637 598	1 427 568	19 491	5 252 116	6 523 719	6 136 870	1 795 346
	3	13 017 268	5 153 324	1 366 217	1 215 229	20 596	5 994 822	7 945 027	6 768 867	1 909 081
	4	13 004 822	4 853 638	2 008 376	1 689 957	19 065	5 111 150	7 547 145	6 267 595	1 956 914
2001	1	11 295 949	5 015 663	1 057 163	1 248 545	3 945	3 639 576	7 830 792	5 674 568	1 825 165
	2	11 857 329	4 856 706	1 629 343	1 159 770	5 082	4 876 905	7 520 187	6 253 966	1 936 697
	3	12 957 768	5 094 690	1 382 915	1 114 258	5 101	5 307 969	8 530 126	6 444 973	2 032 317
	4	13 593 359	4 830 548	2 038 752	1 596 378	4 635	4 648 500	8 684 293	6 176 334	2 033 413
2002	1	12 218 950	5 071 278	1 110 323	1 306 224	47 843	3 563 344	8 734 180	5 586 302	2 027 941
	2	13 188 650	4 939 437	1 583 111	1 345 032	62 746	4 917 642	9 144 805	6 650 528	2 153 596
	3	13 819 848	5 225 787	1 479 284	1 271 956	66 986	5 478 065	9 521 810	6 904 133	2 319 907
	4	15 591 297	4 985 974	2 150 209	1 877 474	62 580	4 966 358	10 839 812	6 844 082	2 447 030
2003	1 ^f	14 484 623	5 172 802	1 276 165	1 509 134	63 131	4 053 280	11 111 934	6 291 560	2 410 262
	2 ^f	12 878 083	4 873 781	1 747 718	1 756 532	81 373	5 363 771	7 793 554	6 567 709	2 170 936
	3 ^f	16 978 384	5 406 278	1 492 967	2 387 380	88 075	5 865 683	12 346 809	8 025 467	2 583 340
	4 ^f	19 225 248	5 217 616	2 313 184	3 328 890	85 923	5 417 370	13 739 051	8 279 965	2 596 821
2004	1 ^f	18 159 355	5 476 349	1 340 666	2 322 013	118 756	4 267 873	14 887 095	7 847 491	2 405 904
	2 ^f	19 608 350	5 581 351	1 857 424	2 591 756	152 800	5 848 739	15 301 986	8 984 300	2 741 407
	3 ^f	21 869 671	6 022 205	1 494 090	3 343 911	171 565	6 725 244	17 206 737	10 276 401	2 817 680
	4 ^f	23 465 931	5 715 953	2 401 049	5 168 623	157 758	5 719 227	17 316 294	9 979 055	3 033 917
2005	1 ^f	20 400 047	6 055 240	1 488 519	3 601 701	111 643	3 498 894	16 644 103	8 210 638	2 789 416
	2 ^f	22 080 659	6 210 445	2 131 311	4 922 236	131 267	3 889 412	17 014 178	9 154 060	3 064 129
	3 [®]	23 563 014	6 685 701	1 619 611	6 494 947	178 249	5 982 218	17 889 874	11 962 610	3 324 976

a 本地生產總值 / PIB / GDP = 3+4+5+6+7 + 8 - 9 - 10

3. 1999年至2005年以當年價格估算之本地生產總值及其主要支出項目的名義變動率

Taxas de variação homóloga do Produto Interno Bruto e principais componentes da despesa a preços correntes, 1999-2005

Year-on-year growth rates of Gross Domestic Product and main components of expenditure at current prices, 1999-2005

		%								
年份	季	本地生產總值	私人消費支出	政府最終消費支出	固定資本形成總額	庫存變化	貨物出口	服務出口	貨物進口	服務進口
Ano	Trimestre	Produto Interno Bruto	Despesa de consumo privado	Despesa de consumo final do governo	Formação bruta de capital fixo	Variação de existências	Exportações de bens	Exportações de serviços	Importações de bens	Importações de serviços
Year	Quarter	Gross Domestic Product	Private consumption expenditure	Government final consumption expenditure	Gross fixed capital formation	Changes in inventories	Exports of goods	Exports of services	Imports of goods	Imports of services
1		2	3	4	5	6	7	8	9	10
1999		- 4.2	- 0.6	11.9	- 6.3	216.0	2.9	- 4.6	4.8	10.6
2000		3.6	- 2.0	- 12.6	- 32.1	- 11.5	15.9	22.3	6.2	16.1
2001		1.5	0.5	1.0	- 8.9	- 74.5	- 9.4	13.1	0.6	7.8
2002		10.3	2.1	3.5	13.3	1 180.0	2.4	17.4	5.8	14.3
2003 ^f		16.0	2.2	8.0	54.8	32.6	9.4	17.7	12.2	9.1
2004 ^f		30.7	10.3	3.9	49.5	88.7	9.0	43.8	27.2	12.7
1999	1	- 5.0	- 0.6	7.8	1.8	229.9	17.9	- 9.3	10.7	8.3
	2	- 11.6	- 2.9	2.5	- 21.0	211.7	1.3	- 11.7	3.4	5.5
	3	- 6.9	- 2.1	9.6	- 4.8	212.8	2.1	- 7.5	4.8	14.8
	4	7.0	3.2	24.3	- 1.1	213.1	- 5.1	12.0	0.5	13.4
2000	1	- 0.5	- 3.7	- 15.7	- 42.4	- 21.0	8.7	10.7	- 8.5	13.2
	2	4.8	- 2.6	- 5.8	- 18.7	- 8.4	18.2	20.1	9.6	17.9
	3	10.9	1.9	- 12.3	- 38.8	- 8.4	16.3	39.9	11.0	18.1
	4	- 0.5	- 3.5	- 16.3	- 26.5	- 9.5	19.4	19.8	12.7	15.2
2001	1	0.2	1.3	2.3	- 2.9	- 72.9	- 9.5	15.4	8.7	14.3
	2	1.5	2.2	- 0.5	- 18.8	- 73.9	- 7.1	15.3	1.9	7.9
	3	- 0.5	- 1.1	1.2	- 8.3	- 75.2	- 11.5	7.4	- 4.8	6.5
	4	4.5	- 0.5	1.5	- 5.5	- 75.7	- 9.1	15.1	- 1.5	3.9
2002	1	8.2	1.1	5.0	4.6	1 112.7	- 2.1	11.5	- 1.6	11.1
	2	11.2	1.7	- 2.8	16.0	1 134.7	0.8	21.6	6.3	11.2
	3	6.7	2.6	7.0	14.2	1 213.3	3.2	11.6	7.1	14.2
	4	14.7	3.2	5.5	17.6	1 250.3	6.8	24.8	10.8	20.3
2003	1 ^r	18.5	2.0	14.9	15.5	32.0	13.7	27.2	12.6	18.9
	2 ^r	- 2.4	- 1.3	10.4	30.6	29.7	9.1	- 14.8	- 1.2	0.8
	3 ^r	22.9	3.5	0.9	87.7	31.5	7.1	29.7	16.2	11.4
	4 ^r	23.3	4.6	7.6	77.3	37.3	9.1	26.7	21.0	6.1
2004	1 ^r	25.4	5.9	5.1	53.9	88.1	5.3	34.0	24.7	- 0.2
	2 ^r	52.3	14.5	6.3	47.5	87.8	9.0	96.3	36.8	26.3
	3 ^r	28.8	11.4	0.1	40.1	94.8	14.7	39.4	28.0	9.1
	4 ^r	22.1	9.6	3.8	55.3	83.6	5.6	26.0	20.5	16.8
2005	1 ^r	12.3	10.6	11.0	55.1	- 6.0	- 18.0	11.8	4.6	15.9
	2 ^r	12.6	11.3	14.7	89.9	- 14.1	- 33.5	11.2	1.9	11.8
	3 [@]	7.7	11.0	8.4	94.2	3.9	- 11.0	4.0	16.4	18.0

季度本地生產總值
 PRODUTO INTERNO BRUTO TRIMESTRAL
 QUARTERLY GROSS DOMESTIC PRODUCT

二零零五年第三季 統計暨普查局 三號刊
 3º TRIMESTRE/2005 DSEC Nº 3
 3rd QUARTER 2005 DSEC No. 3

4. 1998年至2005年以不變(2002年)價格估算之本地生產總值及其主要支出項目

Produto Interno Bruto e principais componentes da despesa a preços constantes (2002), 1998-2005

Gross Domestic Product and main components of expenditure at constant (2002) prices, 1998-2005

千澳門元
 1000 MOP

年份	季	本地生產總值	私人消費支出	政府最終消費支出	固定資本形成總額	庫存變化	貨物出口	服務出口	貨物進口	服務進口
Ano	Trimestre	Produto Interno Bruto	Despesa de consumo privado	Despesa de consumo final do governo	Formação bruta de capital fixo	Variação de existências	Exportações de bens	Exportações de serviços	Importações de bens	Importações de serviços
Year	Quarter	Gross Domestic Product	Private consumption expenditure	Government final consumption expenditure	Gross fixed capital formation	Changes in inventories	Exports of goods	Exports of services	Imports of goods	Imports of services
1		2	3	4	5	6	7	8	9	10
1998		46 862 141	18 718 917	6 266 314	7 742 829	- 69 102	16 108 482	24 275 451	20 974 852	5 205 898
1999		45 756 819	19 181 713	7 082 229	7 883 604	81 426	16 689 573	23 413 389	22 559 444	6 015 670
2000		48 386 399	18 996 874	6 159 955	5 505 331	68 298	19 034 799	28 718 795	22 973 910	7 123 743
2001		49 783 977	19 351 375	6 166 151	5 301 510	17 933	17 936 446	32 512 311	23 763 600	7 738 147
2002		54 818 745	20 222 476	6 322 928	5 800 686	240 156	18 925 409	38 240 607	25 985 045	8 948 473
2003 ^f		62 583 576	20 949 873	6 755 793	8 449 795	324 007	20 696 608	44 780 990	29 445 278	9 928 212
2004 ^f		80 485 706	22 799 503	6 937 695	11 590 538	590 668	22 422 708	63 744 014	36 513 182	11 086 240
1999	1	10 837 547	4 849 135	1 264 261	2 224 234	18 570	3 478 538	6 065 915	5 711 444	1 351 662
	2	10 761 401	4 644 978	1 784 409	1 622 956	21 295	4 352 104	5 406 824	5 610 239	1 460 927
	3	11 401 607	4 856 201	1 592 449	1 873 697	21 886	4 927 573	5 668 567	5 979 141	1 559 625
	4	12 756 264	4 831 398	2 441 109	2 162 717	19 674	3 931 358	6 272 084	5 258 620	1 643 456
2000	1	10 740 974	4 752 923	1 074 958	1 213 695	13 935	3 537 398	6 767 304	5 049 764	1 569 475
	2	11 465 103	4 578 509	1 674 979	1 398 122	18 150	4 883 638	6 514 731	5 842 316	1 760 708
	3	13 096 407	4 976 926	1 390 416	1 205 031	19 188	5 851 792	7 919 871	6 405 431	1 861 387
	4	13 083 915	4 688 516	2 019 602	1 688 484	17 026	4 761 972	7 516 889	5 676 400	1 932 174
2001	1	11 282 722	4 871 443	1 084 137	1 294 687	3 661	3 377 555	7 811 048	5 358 132	1 801 676
	2	11 966 772	4 726 865	1 647 076	1 179 042	4 790	4 790 363	7 507 955	5 977 161	1 912 159
	3	13 030 035	4 982 766	1 390 350	1 181 552	4 915	5 235 638	8 513 314	6 274 373	2 004 128
	4	13 504 448	4 770 300	2 044 588	1 646 229	4 566	4 532 890	8 679 994	6 153 934	2 020 184
2002	1	12 147 810	5 033 828	1 115 655	1 321 385	47 520	3 405 422	8 719 508	5 480 716	2 014 792
	2	13 146 656	4 943 735	1 584 953	1 358 315	63 647	4 989 931	9 143 130	6 786 103	2 150 952
	3	13 962 679	5 235 407	1 475 577	1 267 192	67 258	5 644 203	9 535 028	6 947 136	2 314 850
	4	15 561 600	5 009 505	2 146 744	1 853 794	61 732	4 885 853	10 842 942	6 771 090	2 467 880
2003	1 ^f	14 119 042	5 218 974	1 267 258	1 417 663	63 849	3 817 954	11 057 915	6 297 920	2 426 651
	2 ^f	12 740 603	4 933 563	1 730 899	1 673 097	83 300	5 480 248	7 810 952	6 754 243	2 217 212
	3 ^f	17 001 791	5 501 595	1 475 208	2 279 602	88 933	6 032 358	12 311 839	8 051 642	2 636 101
	4 ^f	18 722 140	5 295 742	2 282 428	3 079 433	87 925	5 366 048	13 600 284	8 341 472	2 648 247
2004	1 ^f	17 857 682	5 535 094	1 310 323	2 056 034	117 892	4 327 752	14 706 151	7 757 407	2 438 158
	2 ^f	19 163 530	5 613 435	1 819 107	2 305 617	150 391	5 837 634	15 102 049	8 903 216	2 761 487
	3 ^f	21 213 708	5 999 250	1 457 789	2 915 103	169 336	6 655 740	16 958 065	10 118 153	2 823 422
	4 ^f	22 250 785	5 651 724	2 350 477	4 313 783	153 049	5 601 582	16 977 749	9 734 405	3 063 173
2005	1 ^f	19 338 645	5 958 486	1 375 838	2 841 413	107 148	3 514 090	16 291 655	7 934 193	2 815 792
	2 ^f	20 710 869	6 096 257	1 988 533	3 774 530	121 960	3 878 894	16 722 855	8 791 526	3 080 635
	3 [®]	21 817 676	6 447 226	1 494 411	4 852 711	163 082	6 000 994	17 539 164	11 367 572	3 312 340

5. 1999年至2005年以不變(2002年)價格估算之本地生產總值及其主要支出項目的實質增長率

Taxas de variação homóloga do Produto Interno Bruto e principais componentes da despesa a preços constantes (2002), 1999-2005

Year-on-year growth rates of Gross Domestic Product and main components of expenditure at constant (2002) prices, 1999-2005

		%								
年份	季	本地生產總值	私人消費支出	政府最終消費支出	固定資本形成總額	庫存變化	貨物出口	服務出口	貨物進口	服務進口
Ano	Trimestre	Produto Interno Bruto	Despesa de consumo privado	Despesa de consumo final do governo	Formação bruta de capital fixo	Variação de existências	Exportações de bens	Exportações de serviços	Importações de bens	Importações de serviços
Year	Quarter	Gross Domestic Product	Private consumption expenditure	Government final consumption expenditure	Gross fixed capital formation	Changes in inventories	Exports of goods	Exports of services	Imports of goods	Imports of services
1	2	3	4	5	6	7	8	9	10	11
1999		- 2.4	2.5	13.0	1.8	217.8	3.6	- 3.6	7.6	15.6
2000		5.7	- 1.0	- 13.0	- 30.2	- 16.1	14.1	22.7	1.8	18.4
2001		2.9	1.9	0.1	- 3.7	- 73.7	- 5.8	13.2	3.4	8.6
2002		10.1	4.5	2.5	9.4	1 239.2	5.5	17.6	9.3	15.6
2003 ^f		14.2	3.6	6.8	45.7	34.9	9.4	17.1	13.3	10.9
2004 ^f		28.6	8.8	2.7	37.2	82.3	8.3	42.3	24.0	11.7
1999	1	- 3.1	2.3	8.8	21.8	240.2	26.4	- 8.2	21.9	12.4
	2	- 11.7	0.3	4.0	- 12.5	221.6	4.4	- 10.9	14.1	11.0
	3	- 3.8	1.4	10.5	- 1.2	210.4	1.9	- 6.4	2.1	20.9
	4	9.7	6.1	25.3	- 0.1	206.3	- 9.6	13.1	- 4.7	17.7
2000	1	- 0.9	- 2.0	- 15.0	- 45.4	- 25.0	1.7	11.6	- 11.6	16.1
	2	6.5	- 1.4	- 6.1	- 13.9	- 14.8	12.2	20.5	4.1	20.5
	3	14.9	2.5	- 12.7	- 35.7	- 12.3	18.8	39.7	7.1	19.3
	4	2.6	- 3.0	- 17.3	- 21.9	- 13.5	21.1	19.8	7.9	17.6
2001	1	5.0	2.5	0.9	6.7	- 73.7	- 4.5	15.4	6.1	14.8
	2	4.4	3.2	- 1.7	- 15.7	- 73.6	- 1.9	15.2	2.3	8.6
	3	- 0.5	0.1	0	- 1.9	- 74.4	- 10.5	7.5	- 2.0	7.7
	4	3.2	1.7	1.2	- 2.5	- 73.2	- 4.8	15.5	8.4	4.6
2002	1	7.7	3.3	2.9	2.1	1 198.0	0.8	11.6	2.3	11.8
	2	9.9	4.6	- 3.8	15.2	1 228.6	4.2	21.8	13.5	12.5
	3	7.2	5.1	6.1	7.2	1 268.4	7.8	12.0	10.7	15.5
	4	15.2	5.0	5.0	12.6	1 251.9	7.8	24.9	10.0	22.2
2003	1 ^f	16.2	3.7	13.6	7.3	34.4	12.1	26.8	14.9	20.4
	2 ^f	- 3.1	- 0.2	9.2	23.2	30.9	9.8	- 14.6	- 0.5	3.1
	3 ^f	21.8	5.1	0	79.9	32.2	6.9	29.1	15.9	13.9
	4 ^f	20.3	5.7	6.3	66.1	42.4	9.8	25.4	23.2	7.3
2004	1 ^f	26.5	6.1	3.4	45.0	84.6	13.4	33.0	23.2	0.5
	2 ^f	50.4	13.8	5.1	37.8	80.5	6.5	93.3	31.8	24.5
	3 ^f	24.8	9.0	- 1.2	27.9	90.4	10.3	37.7	25.7	7.1
	4 ^f	18.8	6.7	3.0	40.1	74.1	4.4	24.8	16.7	15.7
2005	1 ^f	8.3	7.6	5.0	38.2	- 9.1	- 18.8	10.8	2.3	15.5
	2 ^f	8.1	8.6	9.3	63.7	- 18.9	- 33.6	10.7	- 1.3	11.6
	3 [®]	2.8	7.5	2.5	66.5	- 3.7	- 9.8	3.4	12.3	17.3

以下統計表可在本局網頁下載

Os quadros abaixo indicados podem ser consultados na homepage da DSEC
The following statistical tables can be downloaded from our website

6. 1998 年至 2005 年本地生產總值及其主要支出項目之名義結構
Estrutura nominal do Produto Interno Bruto e das principais componentes da despesa, 1998 - 2005
Nominal structure of Gross Domestic Product and main components of expenditure, 1998 - 2005
7. 1998 年至 2005 年本地生產總值及其主要支出項目之實質結構(2002 年=100)
Estrutura real (ano: 2002=100) do Produto Interno Bruto e das principais componentes da despesa, 1998 - 2005
Real structure (year: 2002=100) of Gross Domestic Product and main components of expenditure, 1998 -2005
8. 1998 年至 2005 年以當年價格估算之私人消費支出
Despesa de consumo privado a preços correntes, 1998 - 2005
Private consumption expenditure at current prices, 1998 - 2005
9. 1999 年至 2005 年以當年價格估算之私人消費支出的名義變動率
Taxas de variação homóloga de despesa de consumo privado a preços correntes, 1999 - 2005
Year-on-year growth rates of private consumption expenditure at current prices, 1999 - 2005
10. 1998 年至 2005 年以不變(2002 年)價格估算之私人消費支出
Despesa de consumo privado a preços constantes (2002), 1998 - 2005
Private consumption expenditure at constant (2002) prices, 1998 - 2005
11. 1999 年至 2005 年以不變(2002 年)價格估算之私人消費支出的實質變動率
Taxas de variação homóloga de despesa de consumo privado a preços constantes (2002), 1999 - 2005
Year-on-year growth rates of private consumption expenditure at constant (2002) prices, 1999 - 2005
12. 1998 年至 2005 年以當年價格估算之政府最終消費支出
Despesa de consumo final do governo a preço correntes, 1998 - 2005
Government final consumption expenditure at current prices, 1998 - 2005

13. 1999 年至 2005 年以當年價格估算之政府最終消費支出的名義變動率
Taxas de variação homóloga de despesa de consumo final do governo a preço correntes, 1999 - 2005
Year-on-year growth rates of government final consumption expenditure at current prices, 1999 - 2005
14. 1998 年至 2005 年以不變(2002 年)價格估算之政府最終消費支出
Despesa de consumo final do governo a preço constantes (2002), 1998 - 2005
Government final consumption expenditure at constant (2002) prices, 1998 - 2005
15. 1999 年至 2005 年以不變(2002 年)價格估算之政府最終消費支出的實質變動率
Taxas de variação homóloga de despesa de consumo final do governo a preço constantes (2002), 1999 - 2005
Year-on-year growth rates of government final consumption expenditure at constant (2002) prices, 1999-2005
16. 1998 年至 2005 年以當年價格估算之固定資本形成總額
Formação bruta de capita fixo a preços correntes, 1998 - 2005
Gross fixed capital formation at current prices, 1998 - 2005
17. 1999 年至 2005 年以當年價格估算之固定資本形成總額的名義變動率
Taxas de variação homóloga de formação bruta de capita fixo a preços correntes, 1999 - 2005
Year-on-year growth rates of gross fixed capital formation at current prices, 1999 - 2005
18. 1998 年至 2005 年以不變(2002 年)價格估算之固定資本形成總額
Formação bruta de capita fixo a preços constantes (2002), 1998 - 2005
Gross fixed capital formation at constant (2002) prices, 1998 - 2005
19. 1999 年至 2005 年以不變(2002 年)價格估算之固定資本形成總額的實質變動率
Taxas de variação homóloga de formação bruta de capita fixo a preços constantes (2002), 1999 - 2005
Year-on-year growth rates of gross fixed capital formation at constant (2002) prices, 1999 - 2005
20. 1998 年至 2005 年以當年價格估算之出口
Exportações a preços correntes, 1998 - 2005
Exports at current prices, 1998 - 2005
21. 1999 年至 2005 年以當年價格估算之出口的名義變動率
Taxas de variação homóloga de exportações a preços correntes, 1999 - 2005
Year-on-year growth rates of exports at current prices, 1999 - 2005

22. 1998 年至 2005 年以不變(2002 年)價格估算之出口
Exportações a preços constantes (2002), 1998 - 2005
Exports at constant (2002) prices, 1998 - 2005
23. 1999 年至 2005 年以不變(2002 年)價格估算之出口的實質變動率
Taxas de variação homóloga de exportações a preços constantes (2002), 1999 - 2005
Year-on-year growth rates of exports at constant (2002) prices, 1999 - 2005
24. 1998 年至 2005 年以當年價格估算之進口
Importações a preços correntes, 1998 - 2005
Imports at current prices, 1998 - 2005
25. 1999 年至 2005 年以當年價格估算之進口的名義增長率
Taxas de variação homóloga de importações a preços correntes, 1999 - 2005
Year-on-year growth rates of imports at current prices, 1999 - 2005
26. 1998 年至 2005 年以不變(2002 年)價格估算之進口
Importações a preços constantes (2002), 1998 - 2005
Imports at constant (2002) prices, 1998 - 2005
27. 1999 年至 2005 年以不變(2002 年)價格估算之進口的實質增長率
Taxas de variação homóloga de importações a preços constantes (2002), 1999 - 2005
Year-on-year growth rates of imports at constant (2002) prices, 1999 - 2005