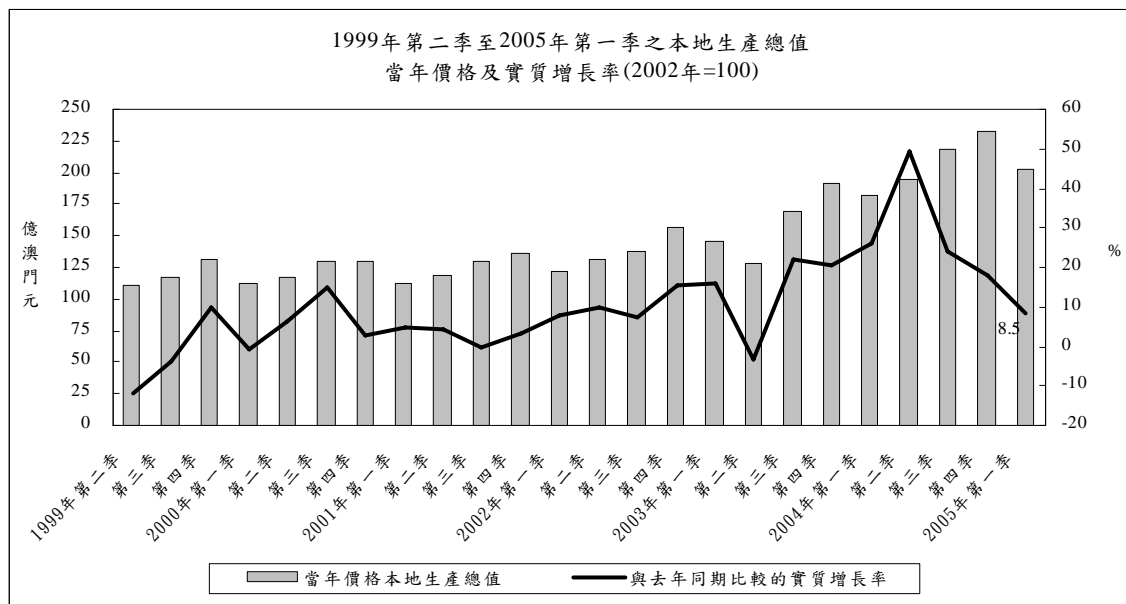


季度本地生產總值

二零零五年第一季

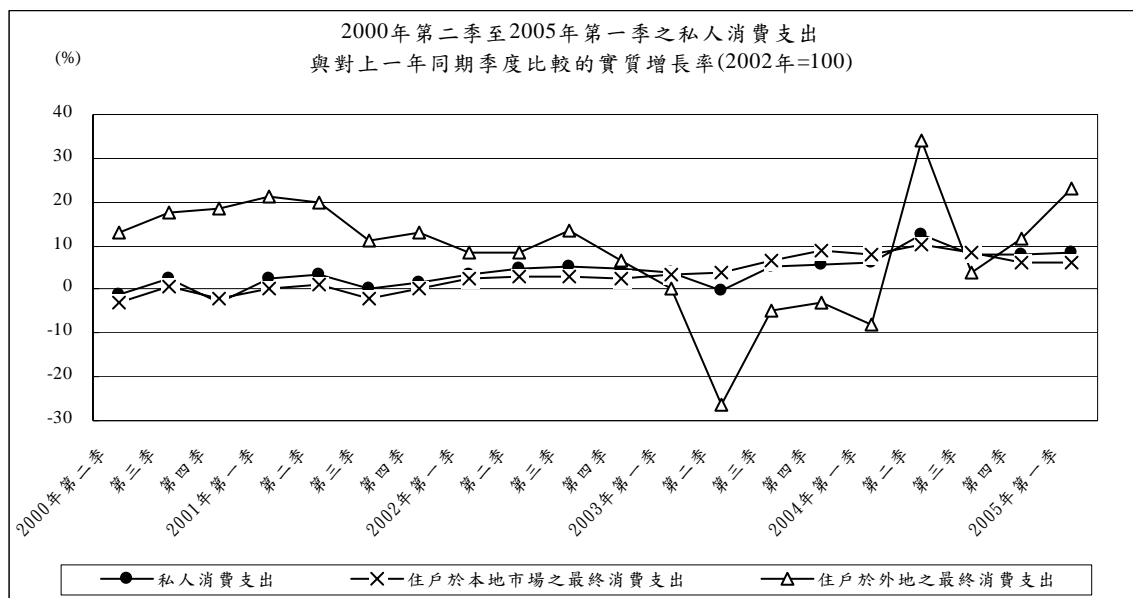
一號刊

本地生產總值經 2004 年高速增長後，2005 年第一季的增長速度回復正常，錄得 8.5% 的實質增長，較 2004 年第四季的 18.1% 為低。博彩總收益的名義增長為 11.7%，旅客消費(不包括博彩消費)隨旅客的增加而上升 3.6%^a。投資方面，因多項大型工程全面展開而得以保持高速增長，與博彩旅遊同時成為推動澳門經濟增長的動力。另一方面，貨物出口則下跌 18.9%。

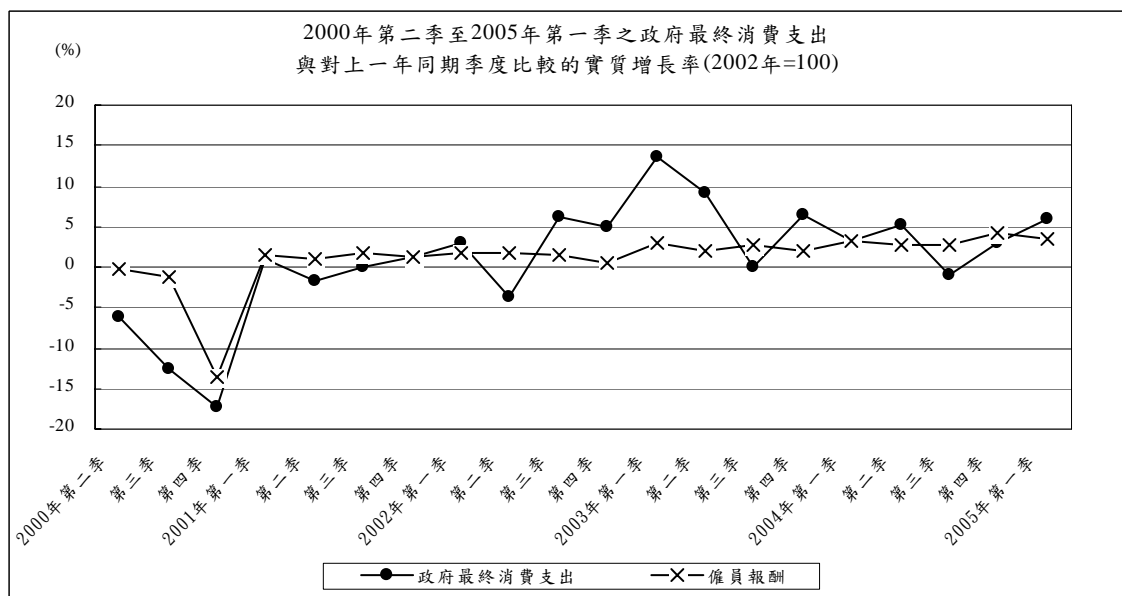


按本地生產總值各個主要組成部分分析，2005年第一季私人消費支出上升 8.3%，較2004年第四季的7.9%為高；其中住戶在本地市場的最終消費支出上升 6.0%，在外地的消費則上升22.9%。

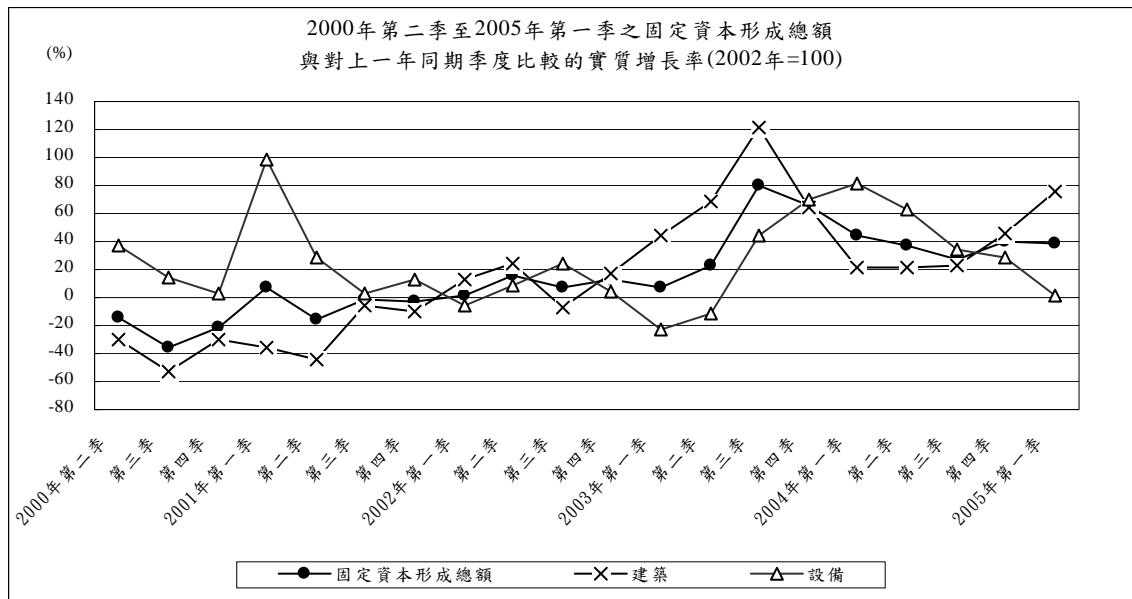
^a 如無特別聲明，本分析所提及之變動率均是指與去年同期比較的實質變動率。



政府最終消費上升5.9%，較2004年第四季的2.9%為高，其中僱員報酬增長3.4%，而貨物及服務的淨購入則大幅上升32.5%。

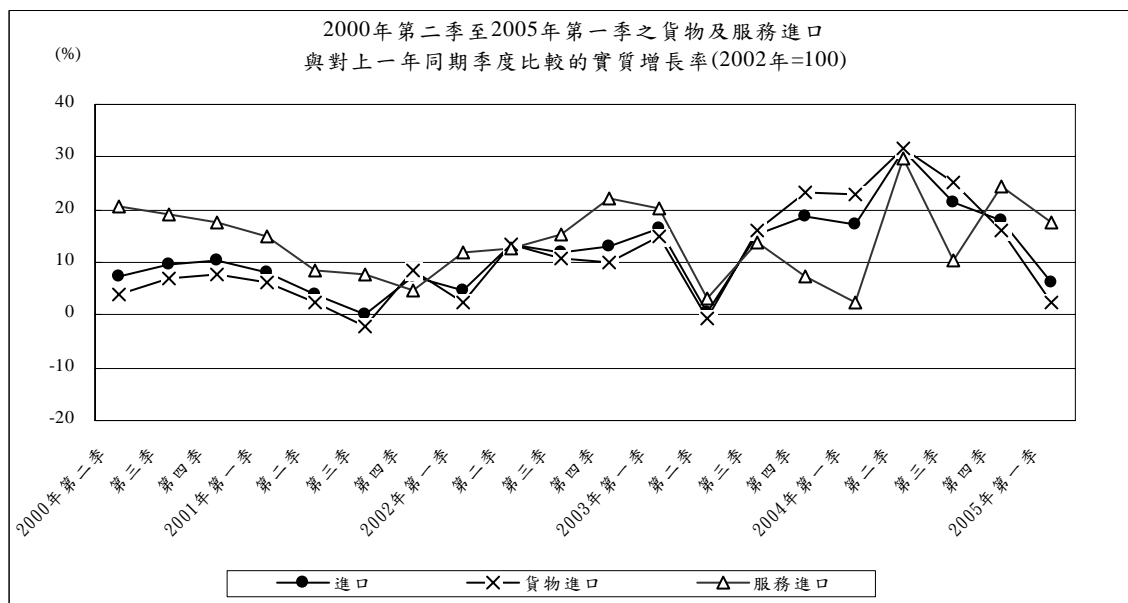
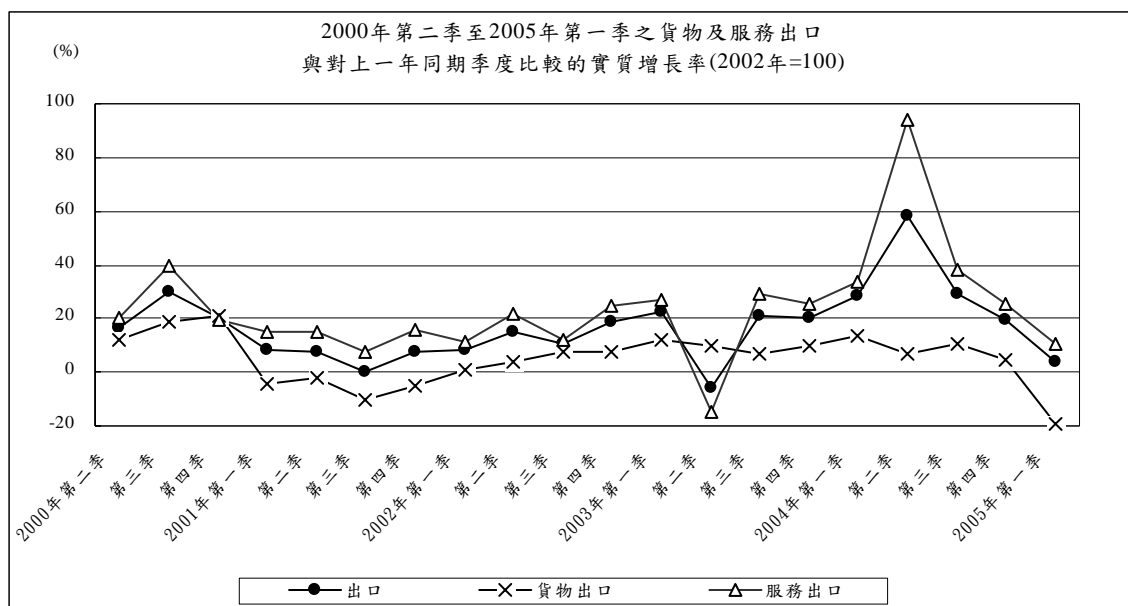


反映投資的固定資本形成總額大幅上升39.2%，雖較2004年第四季的39.4%略低，但增長持續強勁。其中私人部門的投資錄得43.9%的升幅，主要原因是建築投資大幅上升88.6%所致，而設備投資祇上升1.2%；至於政府部門的投資則下跌55.8%，其中建築投資下跌59.0%，而設備投資下跌9.5%。綜合私人及政府部門的數據估算，2005年第一季的整體建築投資上升75.7%，較2004年第四季的45.1%為高；設備投資則上升1.2%，較2004年第四季的28.3%為低。



在有形貿易方面，貨物出口總額的名義跌幅及實質跌幅分別為18.1%及18.9%，扭轉自2002年起的升勢，其中出口美國及歐盟分別錄得12.0%及58.1%的名義跌幅；但貨物進口^b因需求增加而上升，名義升幅及實質升幅分別為4.7%及2.4%，均較2004年第四季的19.9%及16.1%為低。至於無形貿易（服務出口）方面，博彩服務出口的升幅為11.6%；旅客消費（不包括博彩消費）因旅客入境人數增加而上升，但由於以消費較低的不過夜旅客升幅較大，故此總體旅客消費祇錄得3.6%的升幅；運輸服務出口大幅上升54.1%。綜合主要的服務出口數據估算，整體無形貿易出口的增幅為10.9%，較2004年第四季的25.3%為低。另一方面，服務進口上升17.6%，較2004年第四季的24.5%為低。

^b 有關的貨物進口值是經過供給和使用的平衡分析進行調整，故此其增長率與本局的對外貿易統計的貨物進口增長率不同。



1. 1998年至2005年之本地生產總值、人均本地生產總值及本地生產總值之平減物價指數

Produto Interno Bruto, Produto Interno Bruto per capita e deflator implícito do Produto Interno Bruto, 1998 - 2005

Gross Domestic Product, per-capita Gross Domestic Product and implicit deflator of Gross Domestic Product, 1998 - 2005

年份	季	本地生產總值, 以當年價格計算	本地生產總值, 以不變(2002年) 價格計算	本地生產總值之 平減物價指數 (2002年=100)	人均本地生產總 值, 以當年價格計 算	人均本地生產總值, 以不變(2002年) 價格計算
Ano	Trimestre	Produto Interno Bruto, a preços correntes	Produto Interno Bruto, a preços constantes (2002)	Deflator implícito (ano:2002=100) do Produto Interno Bruto	Produto Interno Bruto per capita , a preços correntes	Produto Interno Bruto per capita , a preços constantes (2002)
Year	Quarter	Gross Domestic Product, at current prices	Gross Domestic Product, at constant (2002) prices	Implicit deflator (year:2002=100) of Gross Domestic Product	Per-capita Gross Domestic Product, at current prices	Per-capita Gross Domestic Product, at constant (2002) prices
		千澳門元 1000 MOP	千澳門元 1000 MOP		澳門元 MOP	澳門元 MOP
1		2	3	4	5	6
1998		49 360 446 (-7.3)	46 862 141 (-4.6)	105.3 (-2.8)	116 884 (-8.4)	110 968 (-5.7)
1999		47 287 433 (-4.2)	45 756 819 (-2.4)	103.3 (-1.9)	110 637 (-5.3)	107 056 (-3.5)
2000		48 972 396 (3.6)	48 386 399 (5.7)	101.2 (-2.1)	113 739 (2.8)	112 378 (5.0)
2001		49 704 405 (1.5)	49 783 977 (2.9)	99.8 (-1.4)	114 501 (0.7)	114 684 (2.1)
2002		54 818 745 (10.3)	54 818 745 (10.1)	100.0 (0.2)	125 058 (9.2)	125 058 (9.0)
2003		63 564 343 (16.0)	62 581 691 (14.2)	101.6 (1.6)	142 820 (14.2)	140 612 (12.4)
2004 ^⑥		82 685 465 (30.1)	80 089 012 (28.0)	103.2 (1.6)	180 965 (26.7)	175 282 (24.7)
1999	1	11 330 882 (-5.0)	10 837 547 (-3.1)	104.6 (-1.9)
	2	11 145 060 (-11.6)	10 761 401 (-11.7)	103.6 (0.2)
	3	11 742 756 (-6.9)	11 401 607 (-3.8)	103.0 (-3.2)
	4	13 068 734 (7.0)	12 756 264 (9.7)	102.4 (-2.5)
2000	1	11 271 528 (-0.5)	10 740 974 (-0.9)	104.9 (0.4)
	2	11 678 777 (4.8)	11 465 103 (6.5)	101.9 (-1.6)
	3	13 017 268 (10.9)	13 096 407 (14.9)	99.4 (-3.5)
	4	13 004 822 (-0.5)	13 083 915 (2.6)	99.4 (-3.0)
2001	1	11 295 949 (0.2)	11 282 722 (5.0)	100.1 (-4.6)
	2	11 857 329 (1.5)	11 966 772 (4.4)	99.1 (-2.7)
	3	12 957 768 (-0.5)	13 030 035 (-0.5)	99.4 (0)
	4	13 593 359 (4.5)	13 504 448 (3.2)	100.7 (1.3)
2002	1	12 218 950 (8.2)	12 147 810 (7.7)	100.6 (0.5)
	2	13 188 650 (11.2)	13 146 656 (9.9)	100.3 (1.2)
	3	13 819 848 (6.7)	13 962 679 (7.2)	99.0 (-0.5)
	4	15 591 297 (14.7)	15 561 600 (15.2)	100.2 (-0.5)
2003	1	14 484 273 (18.5)	14 118 697 (16.2)	102.6 (2.0)
	2	12 877 569 (-2.4)	12 740 102 (-3.1)	101.1 (0.8)
	3	16 977 916 (22.9)	17 001 356 (21.8)	99.9 (0.9)
	4	19 224 586 (23.3)	18 721 537 (20.3)	102.7 (2.5)
2004	1 ^⑥	18 121 202 (25.1)	17 822 041 (26.2)	101.7 (-0.9)
	2 ^⑥	19 480 819 (51.3)	19 039 054 (49.4)	102.3 (1.2)
	3 ^⑥	21 774 927 (28.3)	21 123 981 (24.2)	103.1 (3.2)
	4 ^⑥	23 308 517 (21.2)	22 103 936 (18.1)	105.4 (2.7)
2005	1 ^⑥	20 315 767 (12.1)	19 328 165 (8.5)	105.1 (3.4)

季度本地生產總值

PRODUTO INTERNO BRUTO TRIMESTRAL
QUARTERLY GROSS DOMESTIC PRODUCT

二零零五年第一季

1º TRIMESTRE/2005

1st QUARTER 2005

統計暨普查局

DSEC

DSEC

一號刊

Nº 1

No. 1

2. 1998年至2005年以當年價格估算之本地生產總值及其主要支出項目

Produto Interno Bruto e principais componentes da despesa a preços correntes, 1998-2005

Gross Domestic Product and main components of expenditure at current prices, 1998-2005

千澳門元
1000 MOP

年份	季	本地生產總值 ^a	私人消費支出	政府最終消費支出	固定資本形成總額	庫存變化	貨物出口	服務出口	貨物進口	服務進口
Ano	Trimestre	Produto Interno Bruto ^a	Despesa de consumo privado	Despesa de consumo final do governo	Formação bruta de capital fixo	Variação de existências	Exportações de bens	Exportações de serviços	Importações de bens	Importações de serviços
Year	Quarter	Gross Domestic Product ^a	Private consumption expenditure	Government final consumption expenditure	Gross fixed capital formation	Changes in inventories	Exports of goods	Exports of services	Imports of goods	Imports of services
1		2	3	4	5	6	7	8	9	10
1998		49 360 446	20 231 861	6 182 197	8 829 850	- 71 820	17 083 615	24 672 961	21 915 363	5 652 856
1999		47 287 433	20 102 405	6 918 804	8 275 070	83 278	17 579 981	23 539 140	22 961 408	6 249 836
2000		48 972 396	19 706 940	6 045 116	5 618 314	73 717	20 380 421	28 799 077	24 392 564	7 258 625
2001		49 704 405	19 797 608	6 108 172	5 118 950	18 762	18 472 950	32 565 397	24 549 842	7 827 592
2002		54 818 745	20 222 476	6 322 928	5 800 686	240 156	18 925 409	38 240 607	25 985 045	8 948 473
2003		63 564 343	20 670 477	6 828 273	8 981 935	318 043	20 700 104	44 991 348	29 164 701	9 761 136
2004 [®]		82 685 465	22 734 965	7 095 344	13 391 998	374 992	22 561 083	64 988 798	36 982 850	11 478 864
1999	1	11 330 882	5 140 900	1 224 635	2 232 991	18 432	3 700 336	6 127 200	5 702 339	1 411 273
	2	11 145 060	4 875 403	1 738 295	1 756 997	21 288	4 444 604	5 433 007	5 601 295	1 523 240
	3	11 742 756	5 055 636	1 557 713	1 985 683	22 483	5 152 744	5 680 801	6 096 083	1 616 221
	4	13 068 734	5 030 467	2 398 161	2 299 399	21 074	4 282 297	6 298 131	5 561 692	1 699 103
2000	1	11 271 528	4 949 478	1 032 925	1 285 560	14 564	4 022 333	6 783 186	5 219 233	1 597 285
	2	11 678 777	4 750 500	1 637 598	1 427 568	19 491	5 252 116	6 523 719	6 136 870	1 795 346
	3	13 017 268	5 153 324	1 366 217	1 215 229	20 596	5 994 822	7 945 027	6 768 867	1 909 081
	4	13 004 822	4 853 638	2 008 376	1 689 957	19 065	5 111 150	7 547 145	6 267 595	1 956 914
2001	1	11 295 949	5 015 663	1 057 163	1 248 545	3 945	3 639 576	7 830 792	5 674 568	1 825 165
	2	11 857 329	4 856 706	1 629 343	1 159 770	5 082	4 876 905	7 520 187	6 253 966	1 936 697
	3	12 957 768	5 094 690	1 382 915	1 114 258	5 101	5 307 969	8 530 126	6 444 973	2 032 317
	4	13 593 359	4 830 548	2 038 752	1 596 378	4 635	4 648 500	8 684 293	6 176 334	2 033 413
2002	1	12 218 950	5 071 278	1 110 323	1 306 224	47 843	3 563 344	8 734 180	5 586 302	2 027 941
	2	13 188 650	4 939 437	1 583 111	1 345 032	62 746	4 917 642	9 144 805	6 650 528	2 153 596
	3	13 819 848	5 225 787	1 479 284	1 271 956	66 986	5 478 065	9 521 810	6 904 133	2 319 907
	4	15 591 297	4 985 974	2 150 209	1 877 474	62 580	4 966 358	10 839 812	6 844 082	2 447 030
2003	1	14 484 273	5 172 802	1 275 872	1 509 134	63 040	4 053 280	11 111 934	6 291 560	2 410 229
	2	12 877 569	4 873 781	1 747 292	1 756 532	81 255	5 363 771	7 793 554	6 567 709	2 170 906
	3	16 977 916	5 406 278	1 492 591	2 387 380	87 948	5 865 683	12 346 809	8 025 467	2 583 306
	4	19 224 586	5 217 616	2 312 518	3 328 890	85 799	5 417 370	13 739 051	8 279 965	2 596 694
2004	1 [®]	18 121 202	5 481 912	1 338 809	2 315 388	74 112	4 267 873	14 940 741	7 842 713	2 454 920
	2 [®]	19 480 819	5 527 638	1 860 044	2 592 963	95 359	5 848 739	15 380 862	8 971 044	2 853 741
	3 [®]	21 774 927	5 956 296	1 498 037	3 338 281	107 069	6 725 244	17 292 862	10 239 280	2 903 581
	4 [®]	23 308 517	5 769 119	2 398 454	5 145 366	98 452	5 719 227	17 374 333	9 929 813	3 266 622
2005	1 [®]	20 315 767	6 096 833	1 435 212	3 609 743	69 593	3 496 216	16 725 384	8 214 925	2 902 289

a 本地生產總值 / PIB / GDP = 3+4+5+6+7+8-9-10

3. 1999年至2005年以當年價格估算之本地生產總值及其主要支出項目的名義變動率

Taxas de variação homóloga do Produto Interno Bruto e principais componentes da despesa a preços correntes, 1999-2005

Year-on-year growth rates of Gross Domestic Product and main components of expenditure at current prices, 1999-2005

		%								
年份	季	本地生產總值	私人消費支出	政府最終消費支出	固定資本形成總額	庫存變化	貨物出口	服務出口	貨物進口	服務進口
Ano	Trimestre	Produto Interno Bruto	Despesa de consumo privado	Despesa de consumo final do governo	Formação bruta de capital fixo	Variação de existências	Exportações de bens	Exportações de serviços	Importações de bens	Importações de serviços
Year	Quarter	Gross Domestic Product	Private consumption expenditure	Government final consumption expenditure	Gross fixed capital formation	Changes in inventories	Exports of goods	Exports of services	Imports of goods	Imports of services
1		2	3	4	5	6	7	8	9	10
1999		- 4.2	- 0.6	11.9	- 6.3	216.0	2.9	- 4.6	4.8	10.6
2000		3.6	- 2.0	- 12.6	- 32.1	- 11.5	15.9	22.3	6.2	16.1
2001		1.5	0.5	1.0	- 8.9	- 74.5	- 9.4	13.1	0.6	7.8
2002		10.3	2.1	3.5	13.3	1 180.0	2.4	17.4	5.8	14.3
2003		16.0	2.2	8.0	54.8	32.4	9.4	17.7	12.2	9.1
2004 [®]		30.1	10.0	3.9	49.1	17.9	9.0	44.4	26.8	17.6
1999	1	- 5.0	- 0.6	7.8	1.8	229.9	17.9	- 9.3	10.7	8.3
	2	- 11.6	- 2.9	2.5	- 21.0	211.7	1.3	- 11.7	3.4	5.5
	3	- 6.9	- 2.1	9.6	- 4.8	212.8	2.1	- 7.5	4.8	14.8
	4	7.0	3.2	24.3	- 1.1	213.1	- 5.1	12.0	0.5	13.4
2000	1	- 0.5	- 3.7	- 15.7	- 42.4	- 21.0	8.7	10.7	- 8.5	13.2
	2	4.8	- 2.6	- 5.8	- 18.7	- 8.4	18.2	20.1	9.6	17.9
	3	10.9	1.9	- 12.3	- 38.8	- 8.4	16.3	39.9	11.0	18.1
	4	- 0.5	- 3.5	- 16.3	- 26.5	- 9.5	19.4	19.8	12.7	15.2
2001	1	0.2	1.3	2.3	- 2.9	- 72.9	- 9.5	15.4	8.7	14.3
	2	1.5	2.2	- 0.5	- 18.8	- 73.9	- 7.1	15.3	1.9	7.9
	3	- 0.5	- 1.1	1.2	- 8.3	- 75.2	- 11.5	7.4	- 4.8	6.5
	4	4.5	- 0.5	1.5	- 5.5	- 75.7	- 9.1	15.1	- 1.5	3.9
2002	1	8.2	1.1	5.0	4.6	1 112.7	- 2.1	11.5	- 1.6	11.1
	2	11.2	1.7	- 2.8	16.0	1 134.7	0.8	21.6	6.3	11.2
	3	6.7	2.6	7.0	14.2	1 213.3	3.2	11.6	7.1	14.2
	4	14.7	3.2	5.5	17.6	1 250.3	6.8	24.8	10.8	20.3
2003	1	18.5	2.0	14.9	15.5	31.8	13.7	27.2	12.6	18.9
	2	- 2.4	- 1.3	10.4	30.6	29.5	9.1	- 14.8	- 1.2	0.8
	3	22.9	3.5	0.9	87.7	31.3	7.1	29.7	16.2	11.4
	4	23.3	4.6	7.5	77.3	37.1	9.1	26.7	21.0	6.1
2004	1 [®]	25.1	6.0	4.9	53.4	17.6	5.3	34.5	24.7	1.9
	2 [®]	51.3	13.4	6.5	47.6	17.4	9.0	97.4	36.6	31.5
	3 [®]	28.3	10.2	0.4	39.8	21.7	14.7	40.1	27.6	12.4
	4 [®]	21.2	10.6	3.7	54.6	14.7	5.6	26.5	19.9	25.8
2005	1 [®]	12.1	11.2	7.2	55.9	- 6.1	- 18.1	11.9	4.7	18.2

4. 1998年至2005年以不變（2002年）價格估算之本地生產總值及其主要支出項目

Produto Interno Bruto e principais componentes da despesa a preços constantes (2002), 1998-2005

Gross Domestic Product and main components of expenditure at constant (2002) prices, 1998-2005

千澳門元

1000 MOP

年份	季	本地生產總值	私人消費支出	政府最終消費支出	固定資本形成總額	庫存變化	貨物出口	服務出口	貨物進口	服務進口
Ano	Trimestre	Produto Interno Bruto	Despesa de consumo privado	Despesa de consumo final do governo	Formação bruta de capital fixo	Variação de existências	Exportações de bens	Exportações de serviços	Importações de bens	Importações de serviços
Year	Quarter	Gross Domestic Product	Private consumption expenditure	Government final consumption expenditure	Gross fixed capital formation	Changes in inventories	Exports of goods	Exports of services	Imports of goods	Imports of services
1		2	3	4	5	6	7	8	9	10
1998		46 862 141	18 718 917	6 266 314	7 742 829	- 69 102	16 108 482	24 275 451	20 974 852	5 205 898
1999		45 756 819	19 181 713	7 082 229	7 883 604	81 426	16 689 573	23 413 389	22 559 444	6 015 670
2000		48 386 399	18 996 874	6 159 955	5 505 331	68 298	19 034 799	28 718 795	22 973 910	7 123 743
2001		49 783 977	19 351 375	6 166 151	5 301 510	17 933	17 936 446	32 512 311	23 763 600	7 738 147
2002		54 818 745	20 222 476	6 322 928	5 800 686	240 156	18 925 409	38 240 607	25 985 045	8 948 473
2003		62 581 691	20 949 873	6 754 147	8 449 795	323 540	20 696 608	44 780 991	29 445 278	9 927 984
2004 ^⑥		80 089 012	22 753 153	6 939 936	11 555 172	368 617	22 422 708	64 024 470	36 410 738	11 564 307
1999	1	10 837 547	4 849 135	1 264 261	2 224 234	18 570	3 478 538	6 065 915	5 711 444	1 351 662
	2	10 761 401	4 644 978	1 784 409	1 622 956	21 295	4 352 104	5 406 824	5 610 239	1 460 927
	3	11 401 607	4 856 201	1 592 449	1 873 697	21 886	4 927 573	5 668 567	5 979 141	1 559 625
	4	12 756 264	4 831 398	2 441 109	2 162 717	19 674	3 931 358	6 272 084	5 258 620	1 643 456
2000	1	10 740 974	4 752 923	1 074 958	1 213 695	13 935	3 537 398	6 767 304	5 049 764	1 569 475
	2	11 465 103	4 578 509	1 674 979	1 398 122	18 150	4 883 638	6 514 731	5 842 316	1 760 708
	3	13 096 407	4 976 926	1 390 416	1 205 031	19 188	5 851 792	7 919 871	6 405 431	1 861 387
	4	13 083 915	4 688 516	2 019 602	1 688 484	17 026	4 761 972	7 516 889	5 676 400	1 932 174
2001	1	11 282 722	4 871 443	1 084 137	1 294 687	3 661	3 377 555	7 811 048	5 358 132	1 801 676
	2	11 966 772	4 726 865	1 647 076	1 179 042	4 790	4 790 363	7 507 955	5 977 161	1 912 159
	3	13 030 035	4 982 766	1 390 350	1 181 552	4 915	5 235 638	8 513 314	6 274 373	2 004 128
	4	13 504 448	4 770 300	2 044 588	1 646 229	4 566	4 532 890	8 679 994	6 153 934	2 020 184
2002	1	12 147 810	5 033 828	1 115 655	1 321 385	47 520	3 405 422	8 719 508	5 480 716	2 014 792
	2	13 146 656	4 943 735	1 584 953	1 358 315	63 647	4 989 931	9 143 130	6 786 103	2 150 952
	3	13 962 679	5 235 407	1 475 577	1 267 192	67 258	5 644 203	9 535 028	6 947 136	2 314 850
	4	15 561 600	5 009 505	2 146 744	1 853 794	61 732	4 885 853	10 842 942	6 771 090	2 467 880
2003	1	14 118 697	5 218 974	1 266 971	1 417 663	63 757	3 817 954	11 057 915	6 297 920	2 426 618
	2	12 740 102	4 933 563	1 730 487	1 673 097	83 180	5 480 248	7 810 952	6 754 243	2 217 182
	3	17 001 356	5 501 595	1 474 866	2 279 602	88 805	6 032 358	12 311 839	8 051 642	2 636 066
	4	18 721 537	5 295 742	2 281 822	3 079 433	87 798	5 366 048	13 600 284	8 341 472	2 648 118
2004	1 ^⑥	17 822 041	5 541 401	1 308 523	2 049 764	73 573	4 327 752	14 760 220	7 752 684	2 486 509
	2 ^⑥	19 039 054	5 560 425	1 821 815	2 305 882	93 854	5 837 634	15 182 367	8 890 080	2 872 842
	3 ^⑥	21 123 981	5 937 934	1 461 797	2 908 249	105 677	6 655 740	17 044 574	10 081 604	2 908 385
	4 ^⑥	22 103 936	5 713 393	2 347 801	4 291 278	95 514	5 601 582	17 037 309	9 686 371	3 296 571
2005	1 ^⑥	19 328 165	6 000 755	1 386 093	2 853 247	66 791	3 511 400	16 372 785	7 938 409	2 924 496

5. 1999年至2005年以不變（2002年）價格估算之本地生產總值及其主要支出項目的實質增長率

Taxas de variação homóloga do Produto Interno Bruto e principais componentes da despesa a preços constantes (2002), 1999-2005

Year-on-year growth rates of Gross Domestic Product and main components of expenditure at constant (2002) prices, 1999-2005

		%								
年份	季	本地生產總值	私人消費支出	政府最終消費支出	固定資本形成總額	庫存變化	貨物出口	服務出口	貨物進口	服務進口
Ano	Trimestre	Produto Interno Bruto	Despesa de consumo privado	Despesa de consumo final do governo	Formação bruta de capital fixo	Variação de existências	Exportações de bens	Exportações de serviços	Importações de bens	Importações de serviços
Year	Quarter	Gross Domestic Product	Private consumption expenditure	Government final consumption expenditure	Gross fixed capital formation	Changes in inventories	Exports of goods	Exports of services	Imports of goods	Imports of services
1	2	3	4	5	6	7	8	9	10	11
1999		- 2.4	2.5	13.0	1.8	217.8	3.6	- 3.6	7.6	15.6
2000		5.7	- 1.0	- 13.0	- 30.2	- 16.1	14.1	22.7	1.8	18.4
2001		2.9	1.9	0.1	- 3.7	- 73.7	- 5.8	13.2	3.4	8.6
2002		10.1	4.5	2.5	9.4	1 239.2	5.5	17.6	9.3	15.6
2003		14.2	3.6	6.8	45.7	34.7	9.4	17.1	13.3	10.9
2004 [®]		28.0	8.6	2.8	36.8	13.9	8.3	43.0	23.7	16.5
1999	1	- 3.1	2.3	8.8	21.8	240.2	26.4	- 8.2	21.9	12.4
	2	- 11.7	0.3	4.0	- 12.5	221.6	4.4	- 10.9	14.1	11.0
	3	- 3.8	1.4	10.5	- 1.2	210.4	1.9	- 6.4	2.1	20.9
	4	9.7	6.1	25.3	- 0.1	206.3	- 9.6	13.1	- 4.7	17.7
2000	1	- 0.9	- 2.0	- 15.0	- 45.4	- 25.0	1.7	11.6	- 11.6	16.1
	2	6.5	- 1.4	- 6.1	- 13.9	- 14.8	12.2	20.5	4.1	20.5
	3	14.9	2.5	- 12.7	- 35.7	- 12.3	18.8	39.7	7.1	19.3
	4	2.6	- 3.0	- 17.3	- 21.9	- 13.5	21.1	19.8	7.9	17.6
2001	1	5.0	2.5	0.9	6.7	- 73.7	- 4.5	15.4	6.1	14.8
	2	4.4	3.2	- 1.7	- 15.7	- 73.6	- 1.9	15.2	2.3	8.6
	3	- 0.5	0.1	o	- 1.9	- 74.4	- 10.5	7.5	- 2.0	7.7
	4	3.2	1.7	1.2	- 2.5	- 73.2	- 4.8	15.5	8.4	4.6
2002	1	7.7	3.3	2.9	2.1	1 198.0	0.8	11.6	2.3	11.8
	2	9.9	4.6	- 3.8	15.2	1 228.6	4.2	21.8	13.5	12.5
	3	7.2	5.1	6.1	7.2	1 268.4	7.8	12.0	10.7	15.5
	4	15.2	5.0	5.0	12.6	1 251.9	7.8	24.9	10.0	22.2
2003	1	16.2	3.7	13.6	7.3	34.2	12.1	26.8	14.9	20.4
	2	- 3.1	- 0.2	9.2	23.2	30.7	9.8	- 14.6	- 0.5	3.1
	3	21.8	5.1	o	79.9	32.0	6.9	29.1	15.9	13.9
	4	20.3	5.7	6.3	66.1	42.2	9.8	25.4	23.2	7.3
2004	1 [®]	26.2	6.2	3.3	44.6	15.4	13.4	33.5	23.1	2.5
	2 [®]	49.4	12.7	5.3	37.8	12.8	6.5	94.4	31.6	29.6
	3 [®]	24.2	7.9	- 0.9	27.6	19.0	10.3	38.4	25.2	10.3
	4 [®]	18.1	7.9	2.9	39.4	8.8	4.4	25.3	16.1	24.5
2005	1 [®]	8.5	8.3	5.9	39.2	- 9.2	- 18.9	10.9	2.4	17.6

以下統計表可在本局網頁下載

Os quadros abaixo indicados podem ser consultados na homepage da DSEC
The following statistical tables can be downloaded from our website

6. 1998 年至 2005 年本地生產總值及其主要支出項目之名義結構
Estrutura nominal do Produto Interno Bruto e das principais componentes da despesa, 1998 - 2005
Nominal structure of Gross Domestic Product and main components of expenditure, 1998 - 2005
7. 1998 年至 2005 年本地生產總值及其主要支出項目之實質結構(2002 年=100)
Estrutura real (ano: 2002=100) do Produto Interno Bruto e das principais componentes da despesa, 1998 - 2005
Real structure (year: 2002=100) of Gross Domestic Product and main components of expenditure, 1998 -2005
8. 1998 年至 2005 年以當年價格估算之私人消費支出
Despesa de consumo privado a preços correntes, 1998 - 2005
Private consumption expenditure at current prices, 1998 - 2005
9. 1999 年至 2005 年以當年價格估算之私人消費支出的名義變動率
Taxas de variação homóloga de despesa de consumo privado a preços correntes, 1999 - 2005
Year-on-year growth rates of private consumption expenditure at current prices, 1999 - 2005
10. 1998 年至 2005 年以不變(2002 年)價格估算之私人消費支出
Despesa de consumo privado a preços constantes (2002), 1998 - 2005
Private consumption expenditure at constant (2002) prices, 1998 - 2005
11. 1999 年至 2005 年以不變(2002 年)價格估算之私人消費支出的實質變動率
Taxas de variação homóloga de despesa de consumo privado a preços constantes (2002), 1999 - 2005
Year-on-year growth rates of private consumption expenditure at constant (2002) prices, 1999 - 2005
12. 1998 年至 2005 年以當年價格估算之政府最終消費支出
Despesa de consumo final do governo a preço correntes, 1998 - 2005
Government final consumption expenditure at current prices, 1998 - 2005

-
13. 1999 年至 2005 年以當年價格估算之政府最終消費支出的名義變動率
Taxas de variação homóloga de despesa de consumo final do governo a preço correntes, 1999 - 2005
Year-on-year growth rates of government final consumption expenditure at current prices, 1999 - 2005
 14. 1998 年至 2005 年以不變(2002 年)價格估算之政府最終消費支出
Despesa de consumo final do governo a preço constantes (2002), 1998 - 2005
Government final consumption expenditure at constant (2002) prices, 1998 - 2005
 15. 1999 年至 2005 年以不變(2002 年)價格估算之政府最終消費支出的實質變動率
Taxas de variação homóloga de despesa de consumo final do governo a preço constantes (2002), 1999 - 2005
Year-on-year growth rates of government final consumption expenditure at constant (2002) prices, 1999-2005
 16. 1998 年至 2005 年以當年價格估算之固定資本形成總額
Formação bruta de capita fixo a preços correntes, 1998 - 2005
Gross fixed capital formation at current prices, 1998 - 2005
 17. 1999 年至 2005 年以當年價格估算之固定資本形成總額的名義變動率
Taxas de variação homóloga de formação bruta de capita fixo a preços correntes, 1999 - 2005
Year-on-year growth rates of gross fixed capital formation at current prices, 1999 - 2005
 18. 1998 年至 2005 年以不變(2002 年)價格估算之固定資本形成總額
Formação bruta de capita fixo a preços constantes (2002), 1998 - 2005
Gross fixed capital formation at constant (2002) prices, 1998 - 2005
 19. 1999 年至 2005 年以不變(2002 年)價格估算之固定資本形成總額的實質變動率
Taxas de variação homóloga de formação bruta de capita fixo a preços constantes (2002), 1999 - 2005
Year-on-year growth rates of gross fixed capital formation at constant (2002) prices, 1999 - 2005
 20. 1998 年至 2005 年以當年價格估算之出口
Exportações a preços correntes, 1998 - 2005
Exports at current prices, 1998 - 2005
 21. 1999 年至 2005 年以當年價格估算之出口的名義變動率
Taxas de variação homóloga de exportações a preços correntes, 1999 - 2005
Year-on-year growth rates of exports at current prices, 1999 - 2005

-
22. 1998 年至 2005 年以不變(2002 年)價格估算之出口
Exportações a preços constantes (2002), 1998 - 2005
Exports at constant (2002) prices, 1998 - 2005
 23. 1999 年至 2005 年以不變(2002 年)價格估算之出口的實質變動率
Taxas de variação homóloga de exportações a preços constantes (2002), 1999 - 2005
Year-on-year growth rates of exports at constant (2002) prices, 1999 - 2005
 24. 1998 年至 2005 年以當年價格估算之進口
Importações a preços correntes, 1998 - 2005
Imports at current prices, 1998 - 2005
 25. 1999 年至 2005 年以當年價格估算之進口的名義增長率
Taxas de variação homóloga de importações a preços correntes, 1999 - 2005
Year-on-year growth rates of imports at current prices, 1999 - 2005
 26. 1998 年至 2005 年以不變(2002 年)價格估算之進口
Importações a preços constantes (2002), 1998 - 2005
Imports at constant (2002) prices, 1998 - 2005
 27. 1999 年至 2005 年以不變(2002 年)價格估算之進口的實質增長率
Taxas de variação homóloga de importações a preços constantes (2002), 1999 - 2005
Year-on-year growth rates of imports at constant (2002) prices, 1999 - 2005